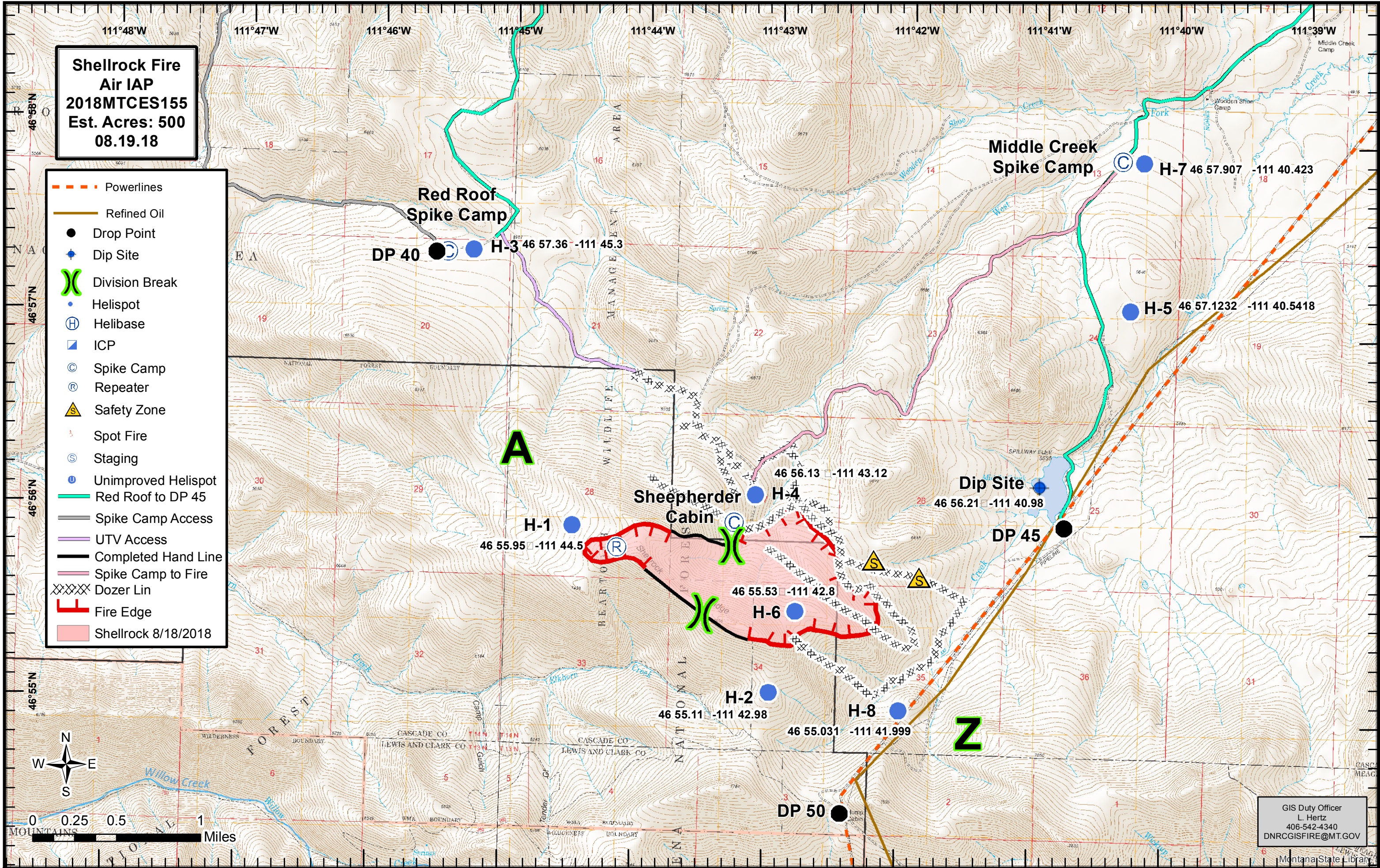


**Shellrock Fire  
Air IAP  
2018MTCES155  
Est. Acres: 500  
08.19.18**

- - - Powerlines
- Refined Oil
- Drop Point
- ◆ Dip Site
- X Division Break
- Helispot
- H Helibase
- ICP
- C Spike Camp
- R Repeater
- ▲ Safety Zone
- Spot Fire
- S Staging
- U Unimproved Helispot
- Red Roof to DP 45
- Spike Camp Access
- UTV Access
- Completed Hand Line
- Spike Camp to Fire
- Dozer Lin
- Fire Edge
- Shellrock 8/18/2018



GIS Duty Officer  
L. Hertz  
406-542-4340  
DNRGISFIRE@MT.GOV