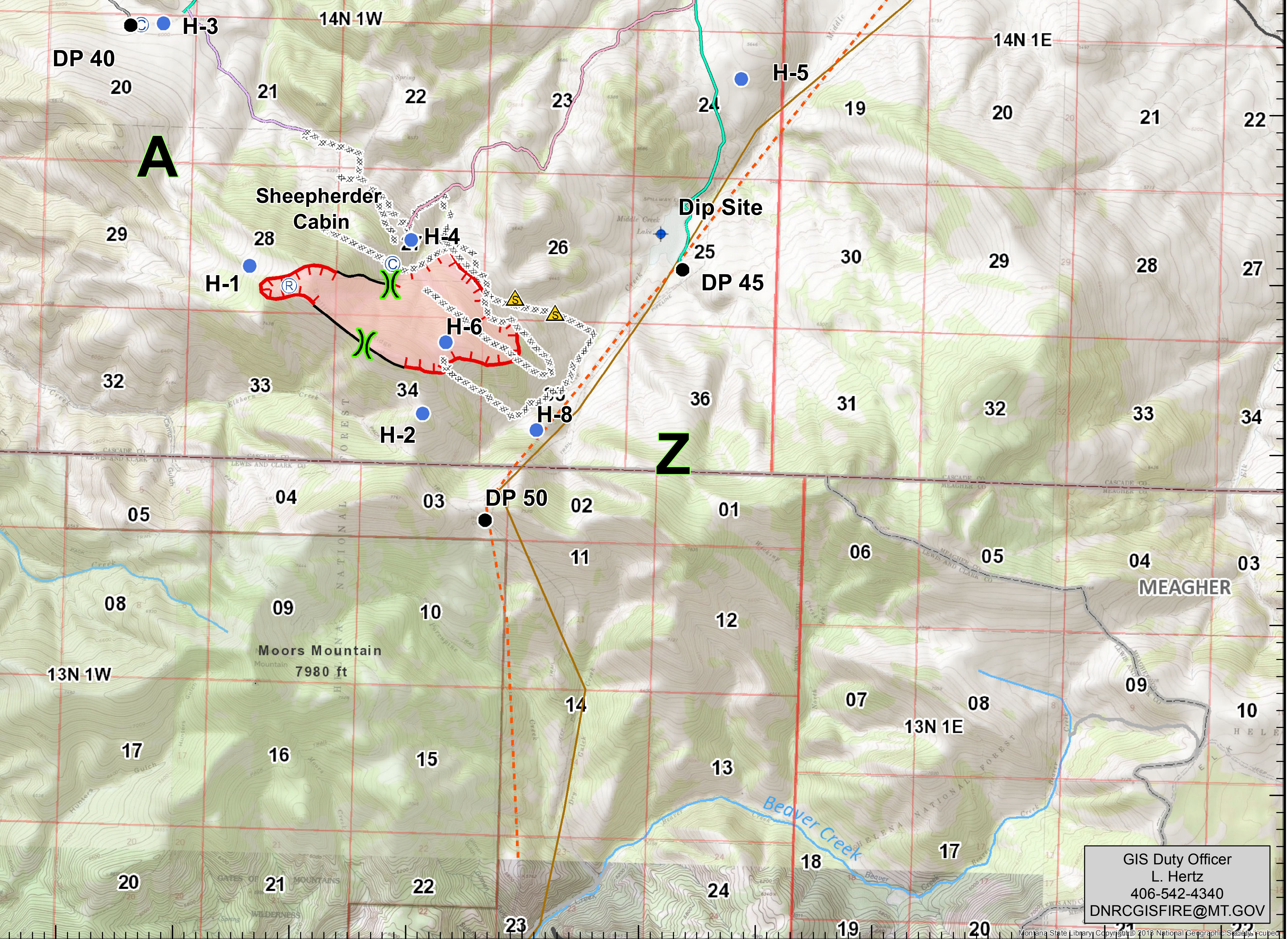
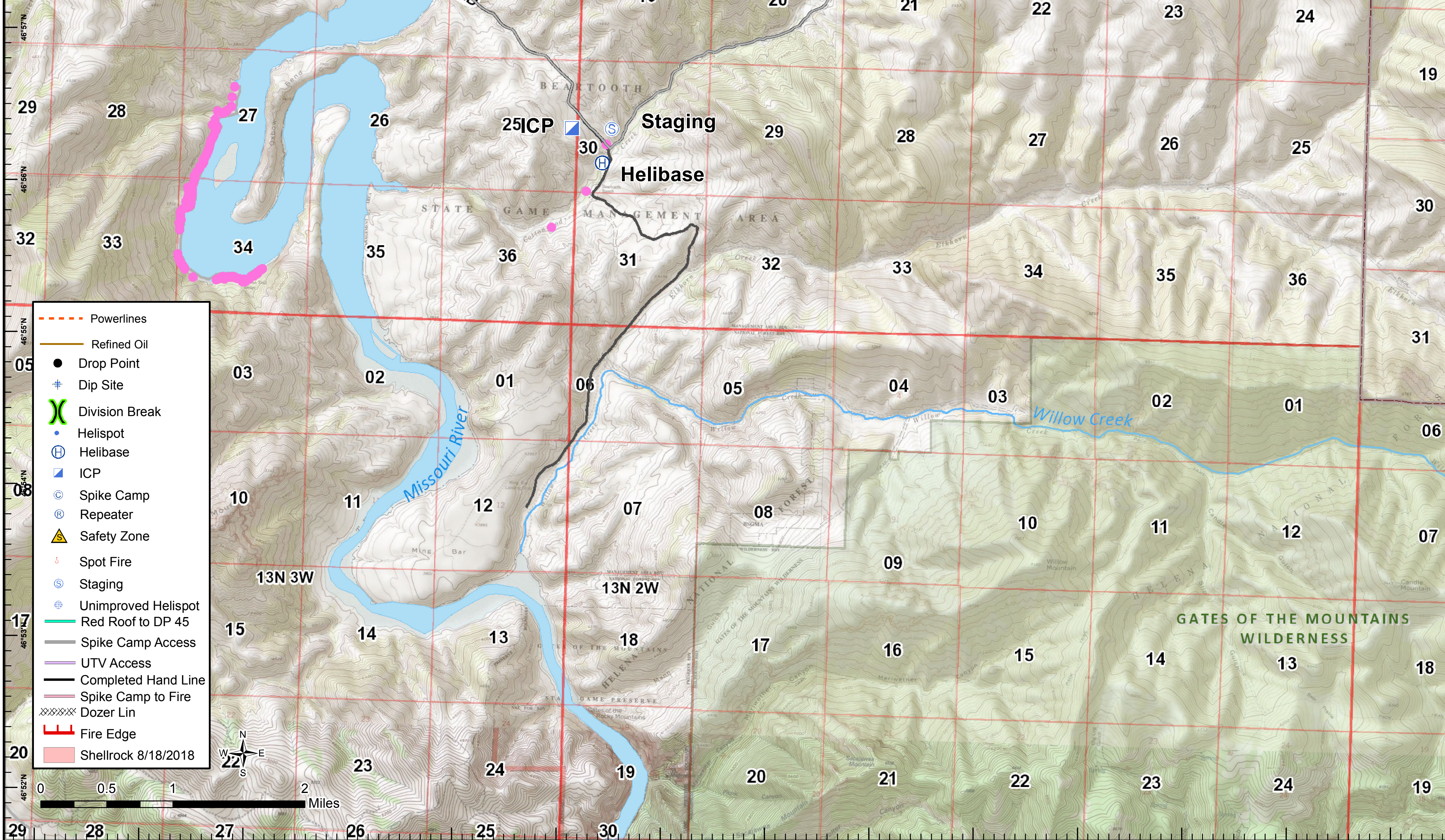
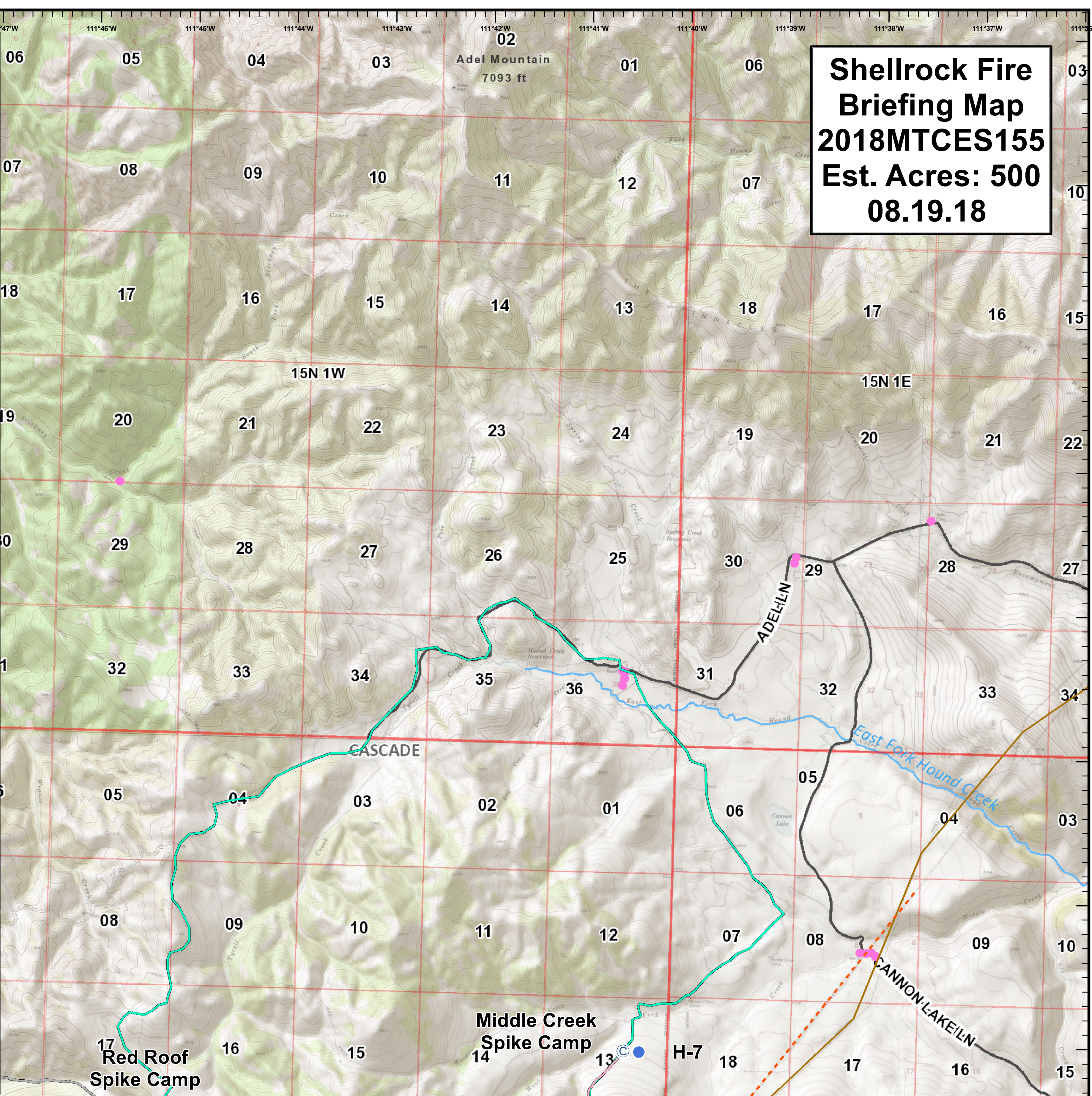
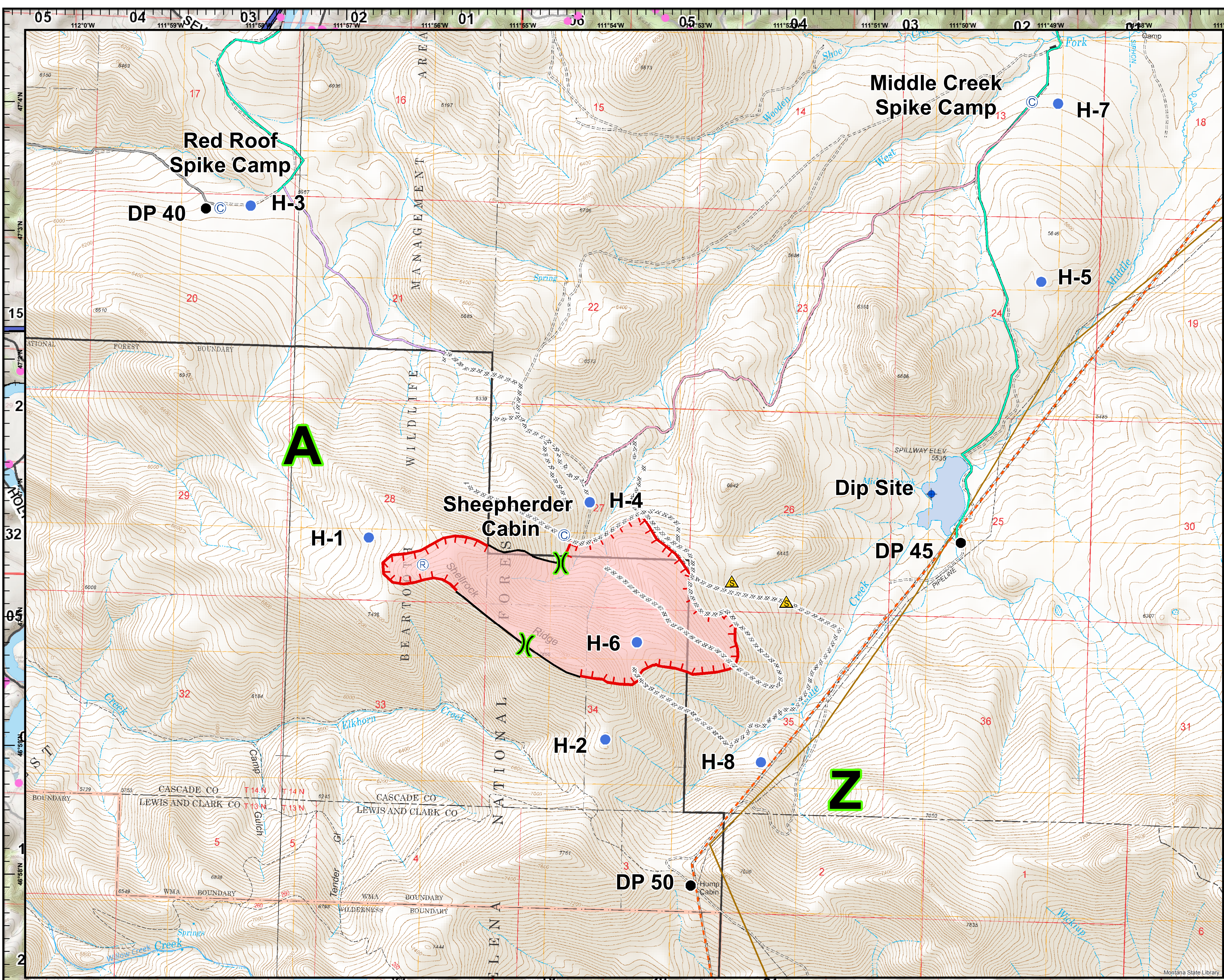
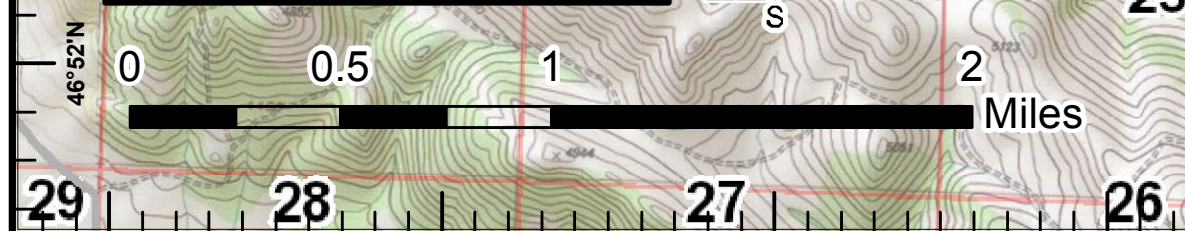


**Shellrock Fire
Briefing Map
2018MTCES155
Est. Acres: 500
08.19.18**



- Powerlines
- Refined Oil
- Drop Point
- + Dip Site
- X Division Break
- * Helispot
- H Helibase
- P ICP
- C Spike Camp
- R Repeater
- ▲ Safety Zone
- * Spot Fire
- S Staging
- * Unimproved Helispot
- Red Roof to DP 45
- Spike Camp Access
- UTV Access
- Completed Hand Line
- Spike Camp to Fire
- Dozer Lin
- Fire Edge
- Shellrock 8/18/2018



GIS Duty Officer
L. Hertz
406-542-4340
DNRCGISFIRE@MT.GOV