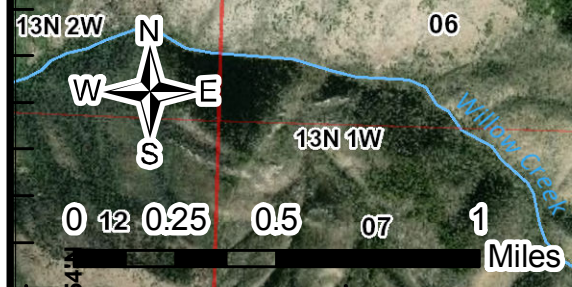
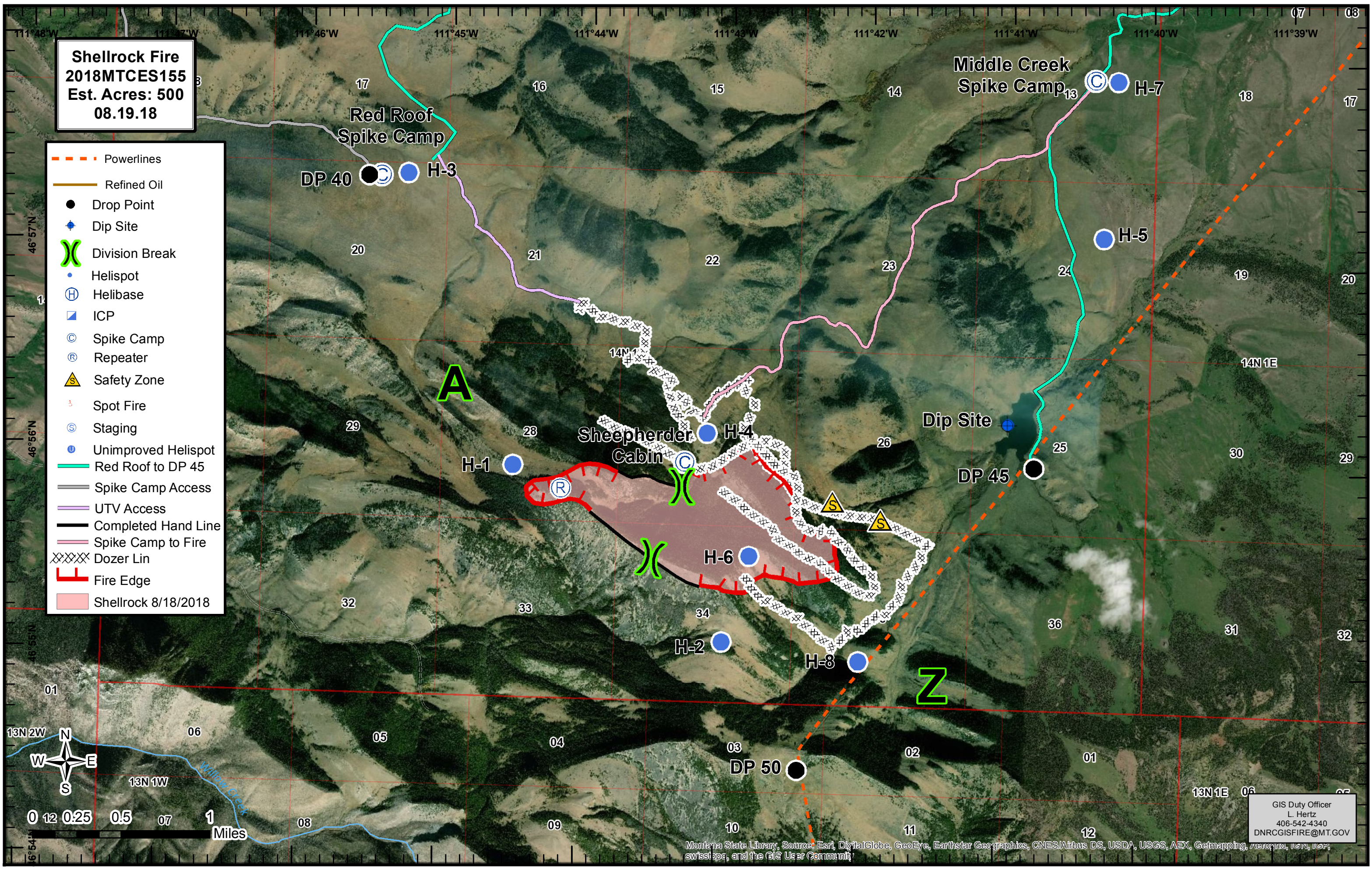


Shellrock Fire
 2018MTCES155
 Est. Acres: 500
 08.19.18

- - - Powerlines
- Refined Oil
- Drop Point
- ◆ Dip Site
- X Division Break
- Helispot
- H Helibase
- ICP
- C Spike Camp
- R Repeater
- S Safety Zone
- Spot Fire
- S Staging
- Unimproved Helispot
- Red Roof to DP 45
- Spike Camp Access
- UTV Access
- Completed Hand Line
- Spike Camp to Fire
- Dozer Lin
- Fire Edge
- Shellrock 8/18/2018



GIS Duty Officer
 L. Hertz
 406-542-4340
 DNRCGISFIRE@MT.GOV

Montana State Library, Source: Esri, DigitalGlobe, GeoEye, Earthstar Geographics, CNES/Airbus DS, USDA, USGS, AEX, Getmapping, Aerogrid, IGN, ICG, swisstopo, and the GIS User Community