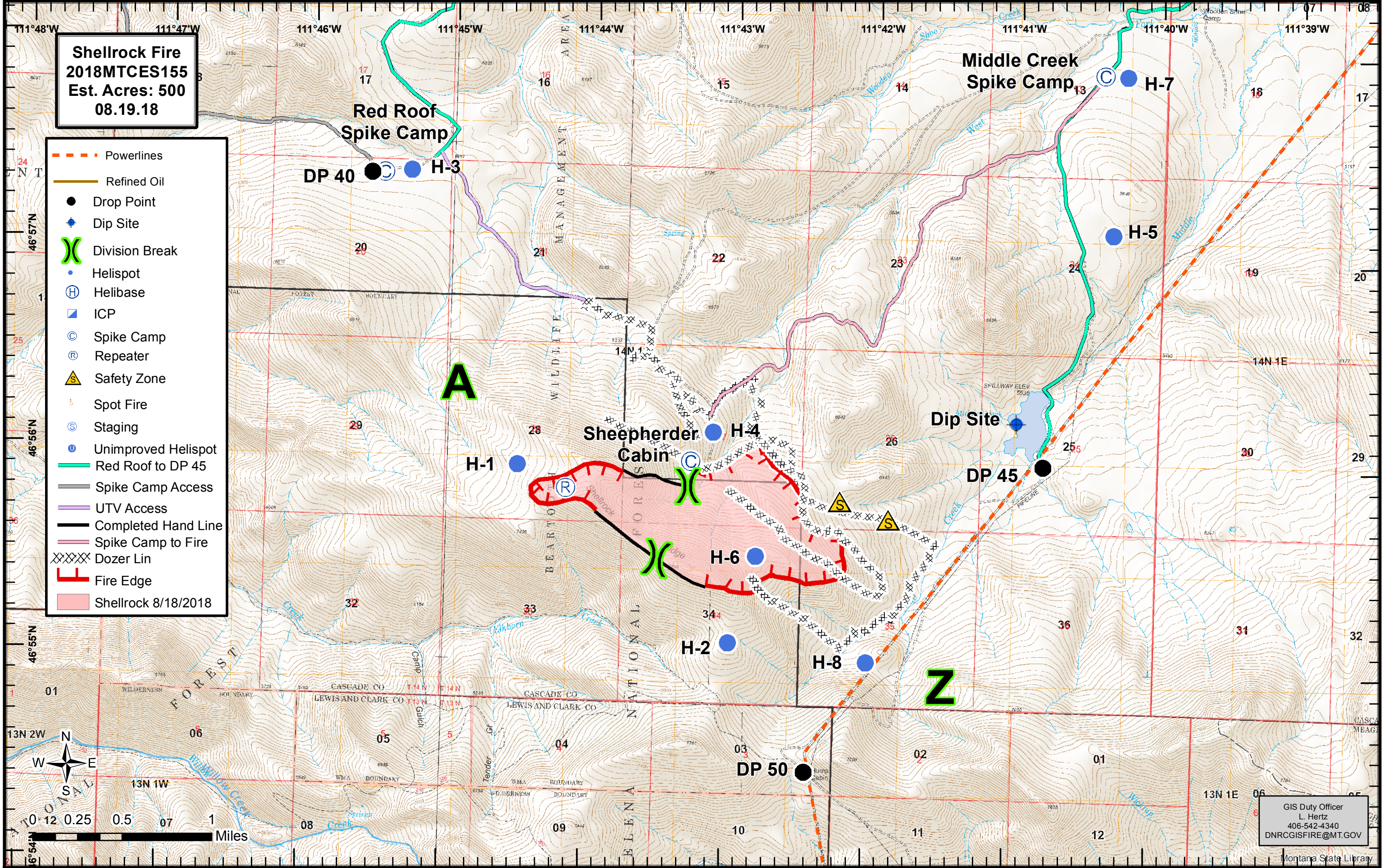


**Shellrock Fire**  
 2018MTCES155  
 Est. Acres: 500  
 08.19.18

- Powerlines
- Refined Oil
- Drop Point
- ◆ Dip Site
- X Division Break
- Helispot
- H Helibase
- ICP
- C Spike Camp
- R Repeater
- S Safety Zone
- Spot Fire
- S Staging
- Unimproved Helispot
- Red Roof to DP 45
- Spike Camp Access
- UTV Access
- Completed Hand Line
- Spike Camp to Fire
- Dozer Lin
- Fire Edge
- Shellrock 8/18/2018



GIS Duty Officer  
 L. Hertz  
 406-542-4340  
 DNRCGISFIRE@MT.GOV