


# SHELLROCK FIRE


## Operational Map

500 Acres

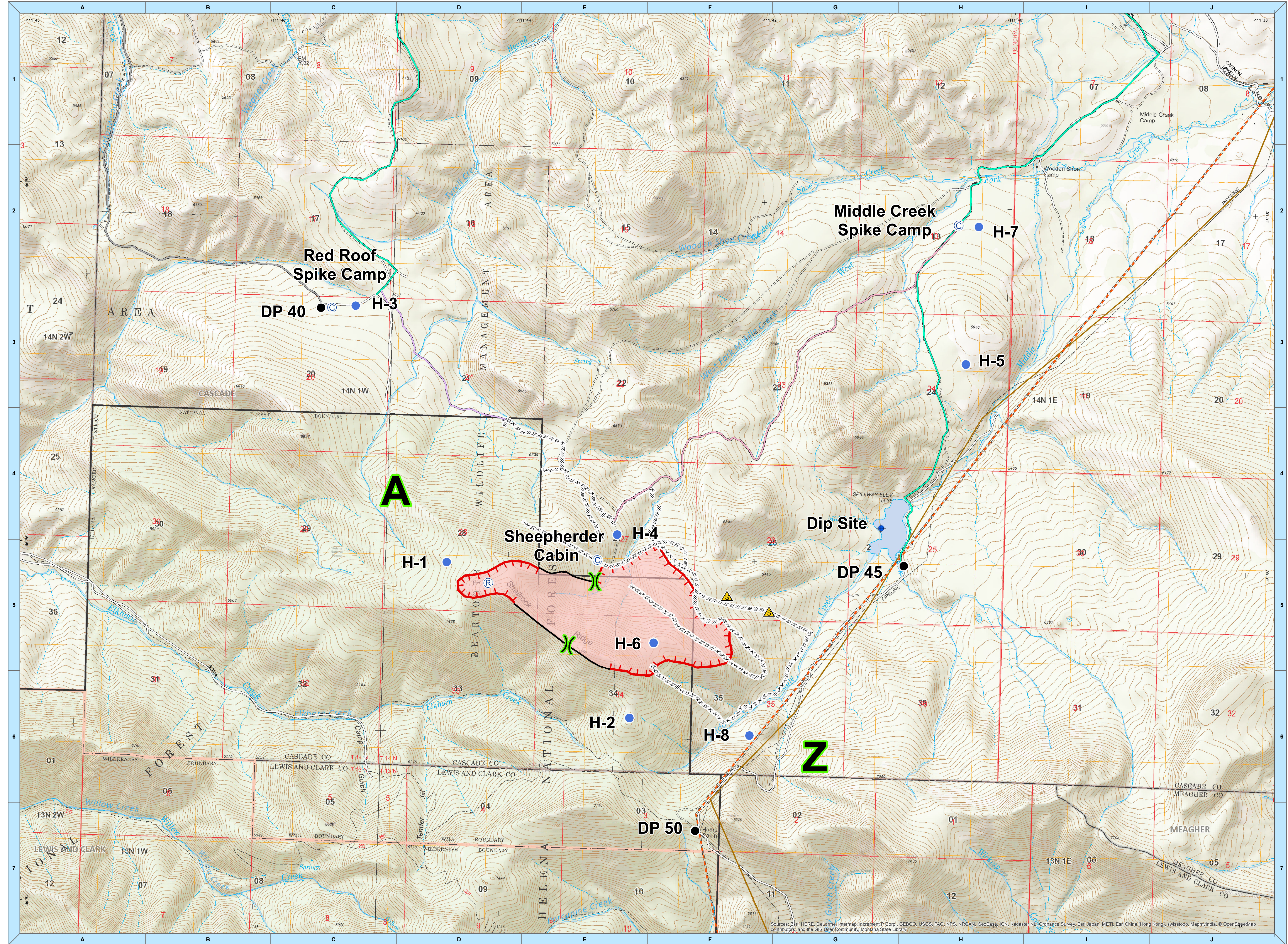
20180819 @ 0800 Hrs



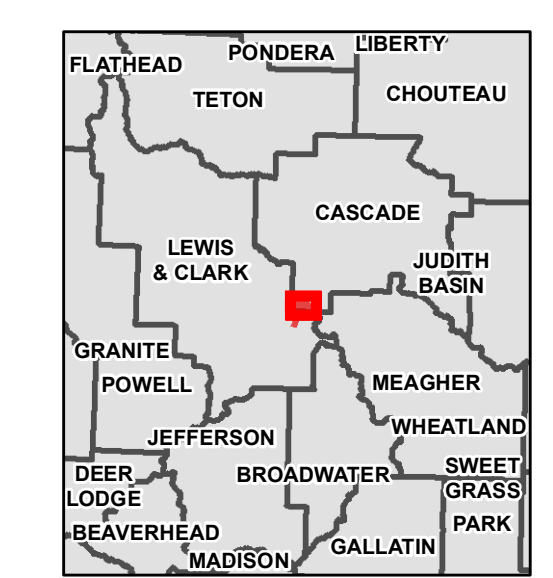
**COUNTY ASSIST TEAM**  
**DNRC**



Miles  
0 0.175 0.35 0.7



- - - Powerlines
- Refined Oil
- Drop Point
- + Dip Site
- X Division Break
- Helispot
- ⊕ Helibase
- ▣ ICP
- ⊙ Spike Camp
- ⊕ Repeater
- ▲ Safety Zone
- ⋄ Spot Fire
- ⊙ Staging
- ⊕ Unimproved Helispot
- Red Roof to DP 45
- Spike Camp Access
- UTV Access
- Completed Hand Line
- Spike Camp to Fire
- - - Dozer Lin
- ┌┐ Fire Edge
- Shellrock 8/18/2018



Montana State Plane Projection  
Lat/Lon 1 minute grid shown in black

Sources: Esri, HERE, DeLorme, Intermap, increment P Corp., GEBCO, USGS, FAO, NPS, NRCAN, GeBCO, IGN, Kadaster NL, Ordnance Survey, Esri, Japan, METI, Esri, China (Hong Kong), Swisstopo, Mapbox, and the GIS User Community, Montana State Library