



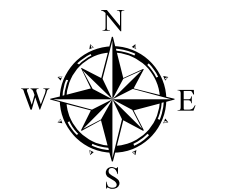
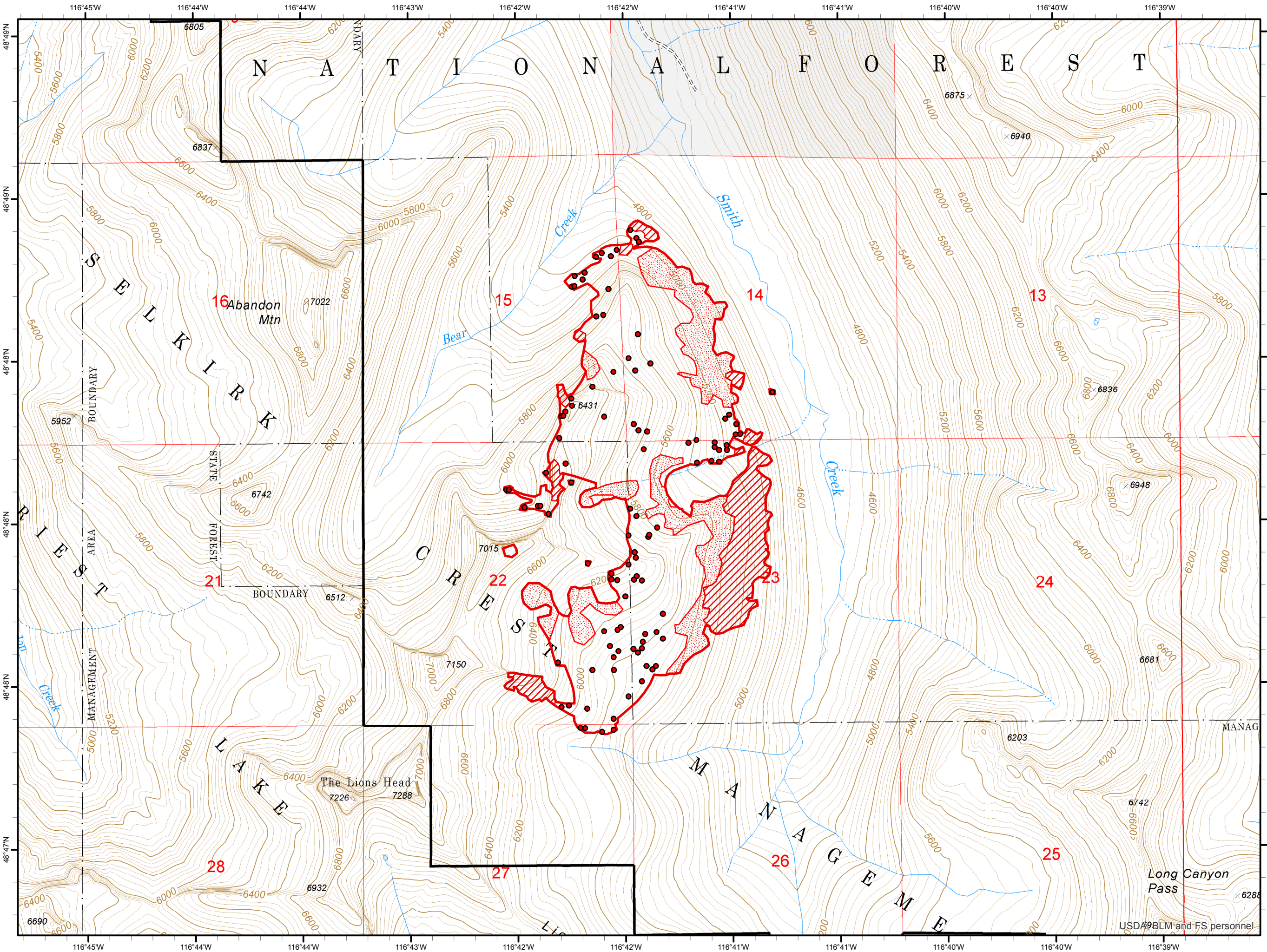


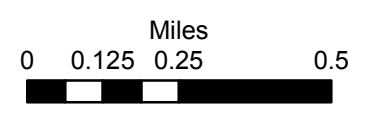
Smith Creek ID-IPF-000402 Infrared Heat Sources

1:20,000

-  Heat Perimeter
 -  Intense Heat Areas
 -  Scattered Heat Areas
 -  Isolated Heat Sources
- NAD 1983 UTM Zone 11N



IR Interpreter: Brian Monroe
 IR interpreted acres: 556
 Date: 08/08/2018
 Scan Date/Time: 08/08/18 0136 hrs



USDA BLM and FS personnel