



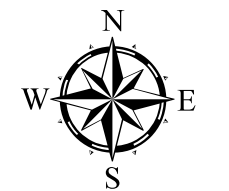
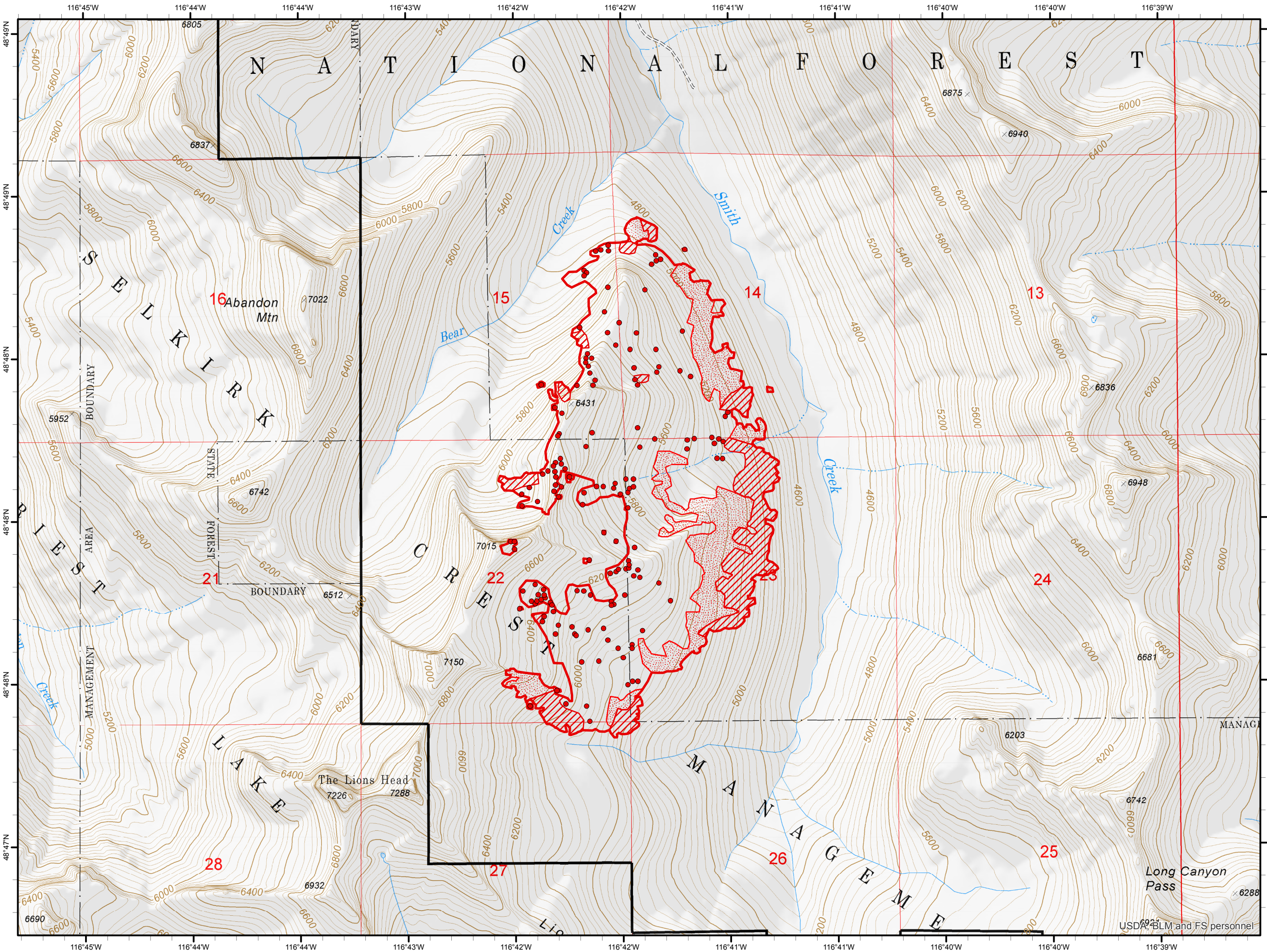


# Smith Creek ID-IPF-000402 Infrared Heat Sources

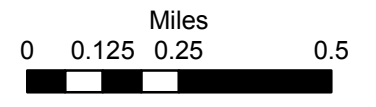
1:20,000

-  Heat Perimeter
-  Intense Heat Areas
-  Scattered Heat Areas
-  Isolated Heat Sources

NAD 1983 UTM Zone 11N



IR Interpreter: Brian Monroe  
IR interpreted acres: 617  
Date: 08/09/2018  
Scan Date/Time: 08/08/18 2254 hrs



USDA, BLM and FS personnel