

Shellrock Stakeholders Briefing Map



- Powerlines
- Refined Oil
- Shellrock 8/13/2018
- Shellrock ICP

Name

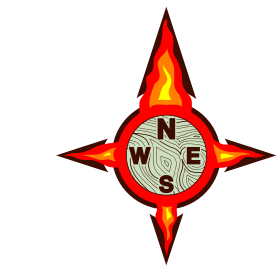
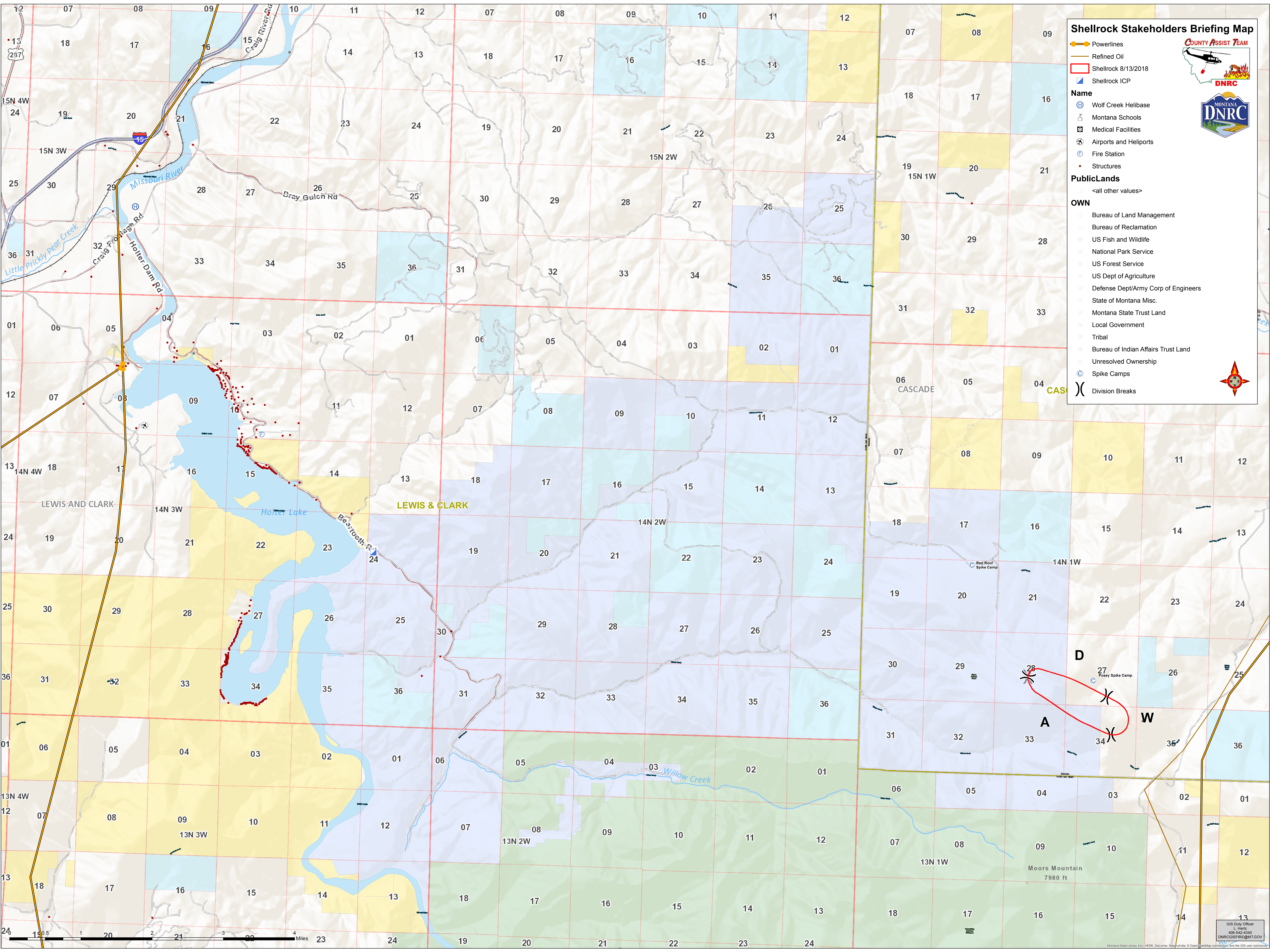
- Wolf Creek Helibase
- Montana Schools
- Medical Facilities
- Airports and Heliports
- Fire Station
- Structures

PublicLands

- <all other values>

OWN

- Bureau of Land Management
- Bureau of Reclamation
- US Fish and Wildlife
- National Park Service
- US Forest Service
- US Dept of Agriculture
- Defense Dept/Army Corp of Engineers
- State of Montana Misc.
- Montana State Trust Land
- Local Government
- Tribal
- Bureau of Indian Affairs Trust Land
- Unresolved Ownership
- Spike Camps
- Division Breaks



GIS Duty Officer
L. Hertz
406-542-4340
DNRCGIS@REG.MT.GOV