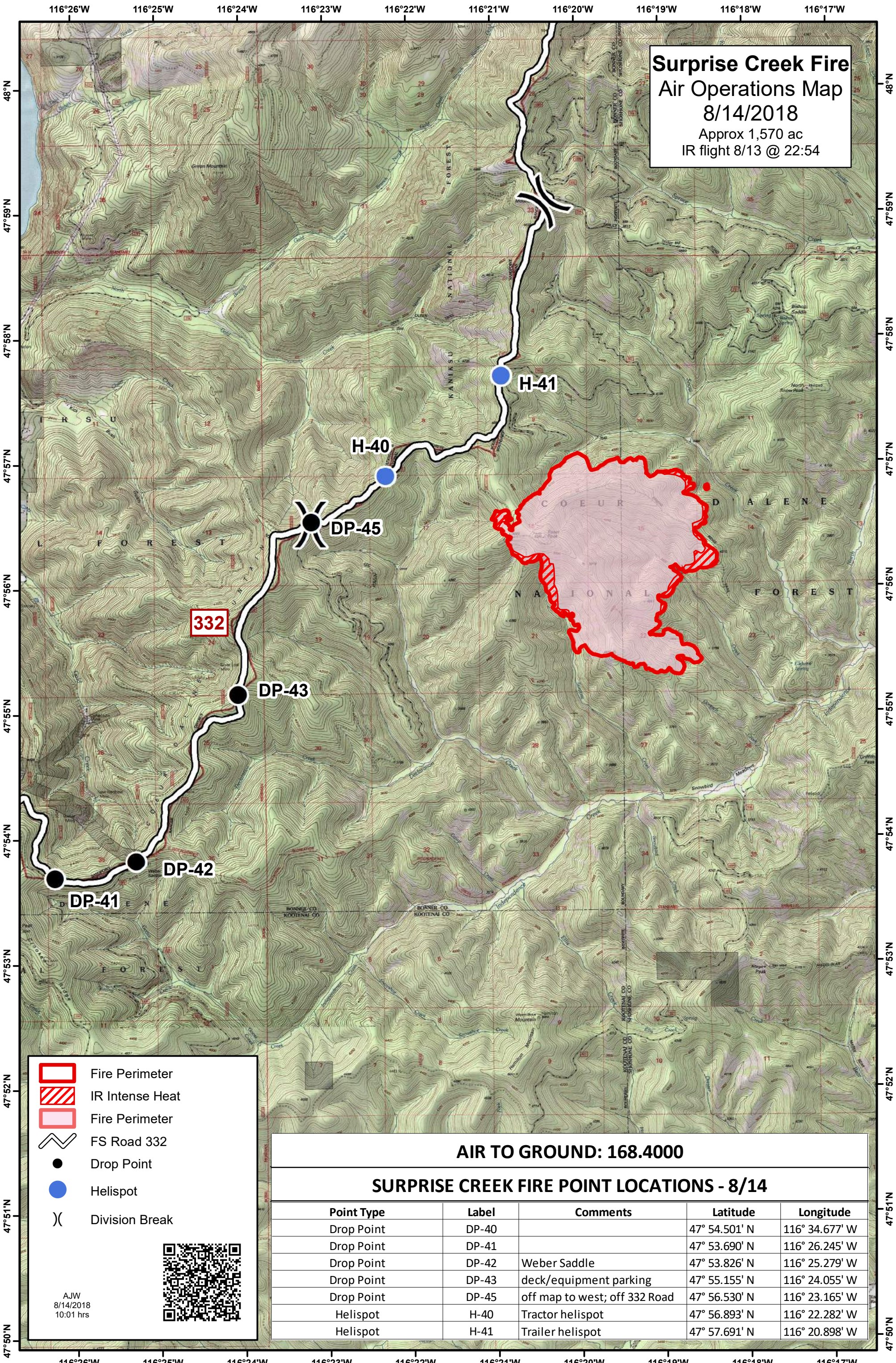


Surprise Creek Fire
Air Operations Map
 8/14/2018
 Approx 1,570 ac
 IR flight 8/13 @ 22:54



- Fire Perimeter
- IR Intense Heat
- Fire Perimeter
- FS Road 332
- Drop Point
- Helispot
- Division Break

AJW
8/14/2018
10:01 hrs

AIR TO GROUND: 168.4000

SURPRISE CREEK FIRE POINT LOCATIONS - 8/14

Point Type	Label	Comments	Latitude	Longitude
Drop Point	DP-40		47° 54.501' N	116° 34.677' W
Drop Point	DP-41		47° 53.690' N	116° 26.245' W
Drop Point	DP-42	Weber Saddle	47° 53.826' N	116° 25.279' W
Drop Point	DP-43	deck/equipment parking	47° 55.155' N	116° 24.055' W
Drop Point	DP-45	off map to west; off 332 Road	47° 56.530' N	116° 23.165' W
Helispot	H-40	Tractor helispot	47° 56.893' N	116° 22.282' W
Helispot	H-41	Trailer helispot	47° 57.691' N	116° 20.898' W