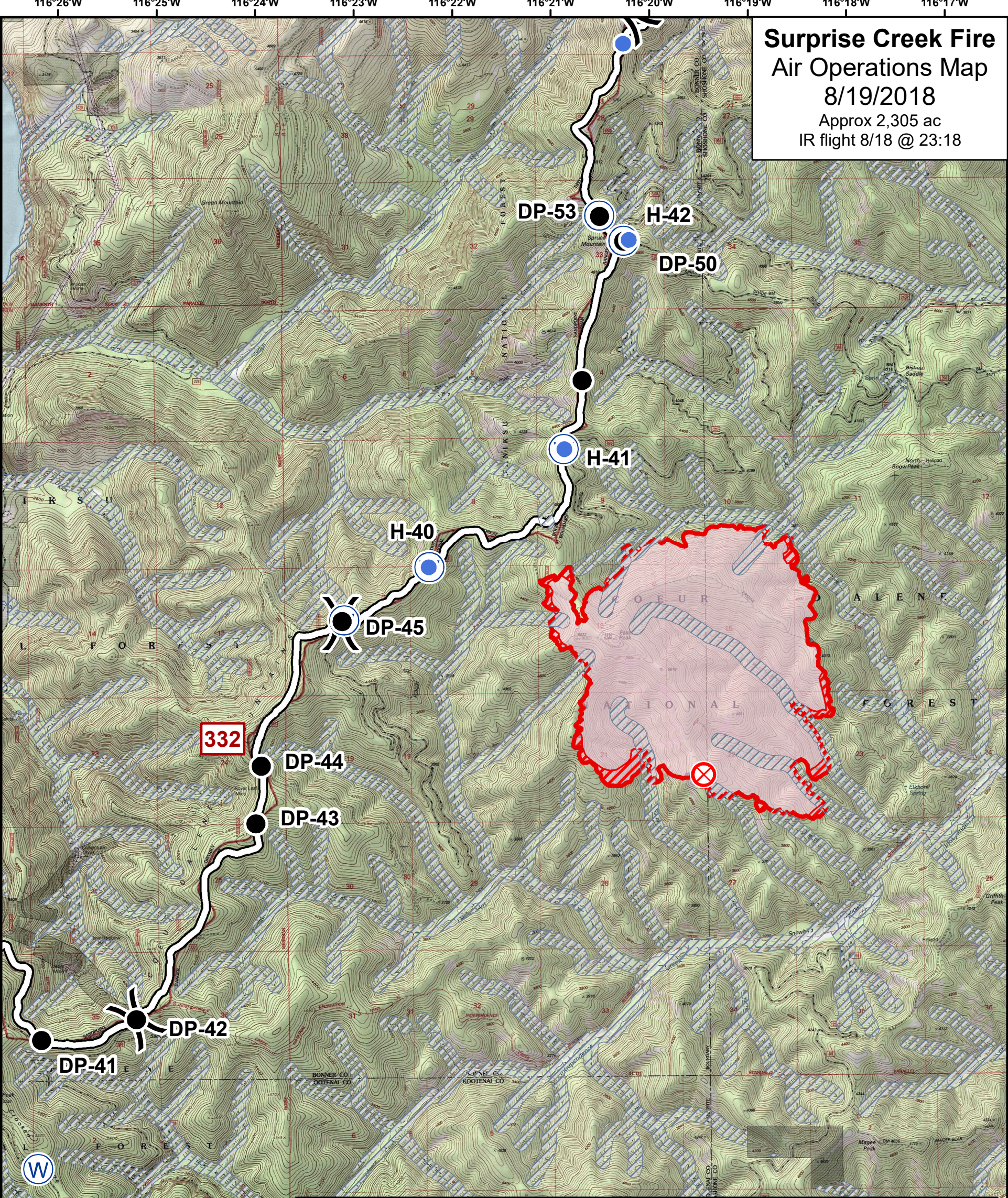


**Surprise Creek Fire**  
**Air Operations Map**  
 8/19/2018  
 Approx 2,305 ac  
 IR flight 8/18 @ 23:18



**AIR TO GROUND: 168.4000**

**SURPRISE CREEK POINT LOCATIONS**

Point Type	Label	Comments	Latitude	Longitude
Helispot	H-40	Tractor helispot	47° 56.893' N	116° 22.282' W
Helispot	H-41	Trailer helispot	47° 57.691' N	116° 20.898' W
Helispot	H-42		47° 59.112' N	116° 20.227' W
Unimproved Landing Area	-----	Will be H-43 when approved	48° 0.449' N	116° 20.269' W
Drop Point	DP-40		47° 54.501' N	116° 34.677' W
Drop Point	DP-41		47° 53.690' N	116° 26.245' W
Drop Point	DP-42	Weber Saddle	47° 53.826' N	116° 25.279' W
Drop Point	DP-43	deck/equipment parking	47° 55.155' N	116° 24.055' W
Drop Point	DP-44		47° 55.548' N	116° 23.998' W
Drop Point	DP-50		47° 59.105' N	116° 20.279' W
Drop Point	DP-53		47° 59.275' N	116° 20.521' W
Drop Point	DP-45		47° 56.530' N	116° 23.165' W

- Retardant Avoidance Areas
- Heat Perimeter
- Intense Heat
- FS Road 332
- Drop Point
- Fire Origin
- Helispot
- Water Source
- Division Break

RCG  
 8/19/2018  
 19:32 hrs

0 1/2 1 2 Miles  
 \*\*\*NO TFR FOR SURPRISE CREEK FIRE\*\*\*

