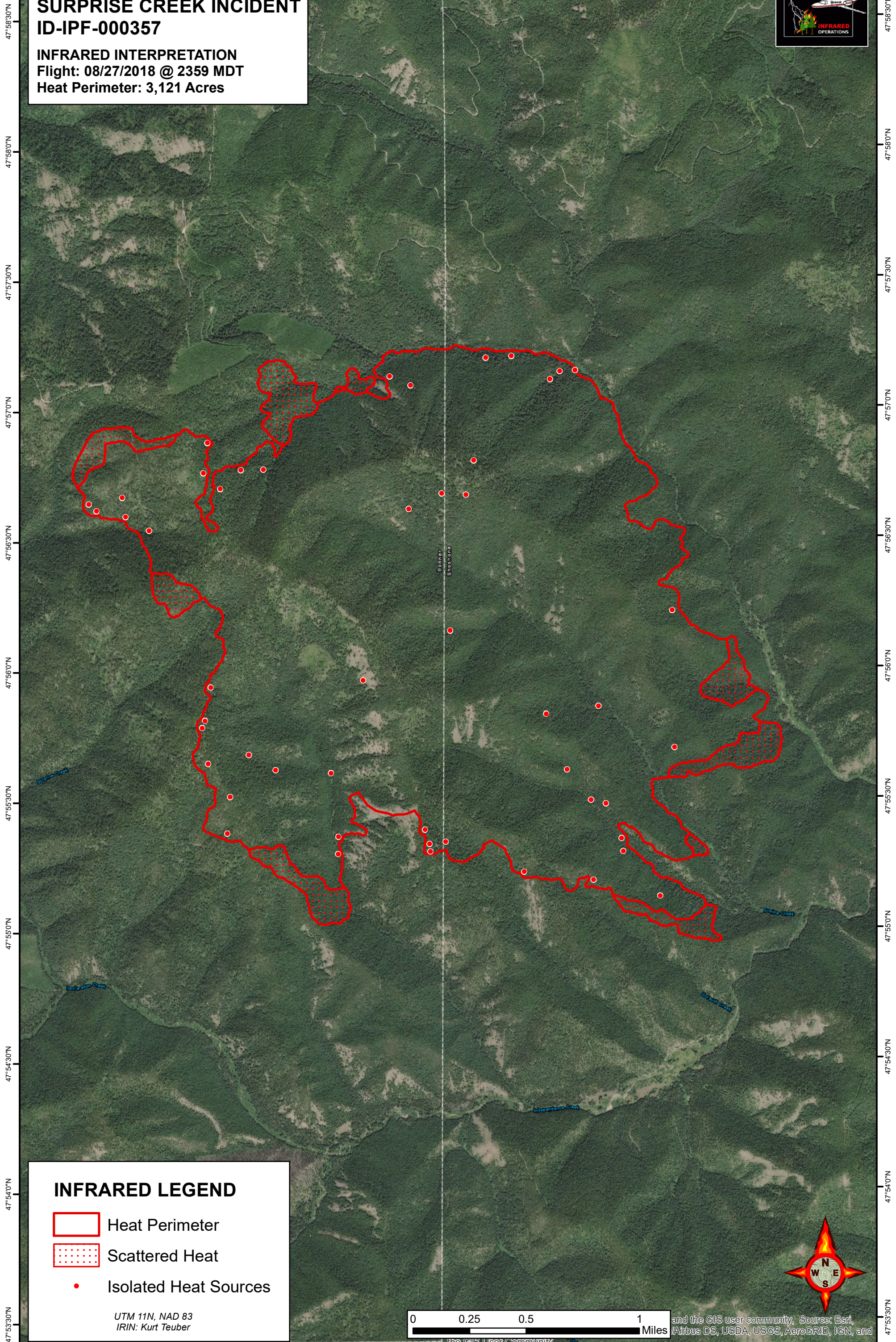





116°21'30"W 116°21'0"W 116°20'30"W 116°20'0"W 116°19'30"W 116°19'0"W 116°18'30"W 116°18'0"W 116°17'30"W 116°17'0"W

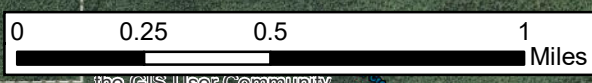
SURPRISE CREEK INCIDENT
ID-IPF-000357
INFRARED INTERPRETATION
Flight: 08/27/2018 @ 2359 MDT
Heat Perimeter: 3,121 Acres



INFRARED LEGEND

-  Heat Perimeter
-  Scattered Heat
-  Isolated Heat Sources

UTM 11N, NAD 83
IRIN: Kurt Teuber



and the GIS user community. Source: Esri, Airbus DS, USDA, USGS, AeroGRID, IGN, and the GIS User Community

116°21'30"W 116°21'0"W 116°20'30"W 116°20'0"W 116°19'30"W 116°19'0"W 116°18'30"W 116°18'0"W 116°17'30"W 116°17'0"W