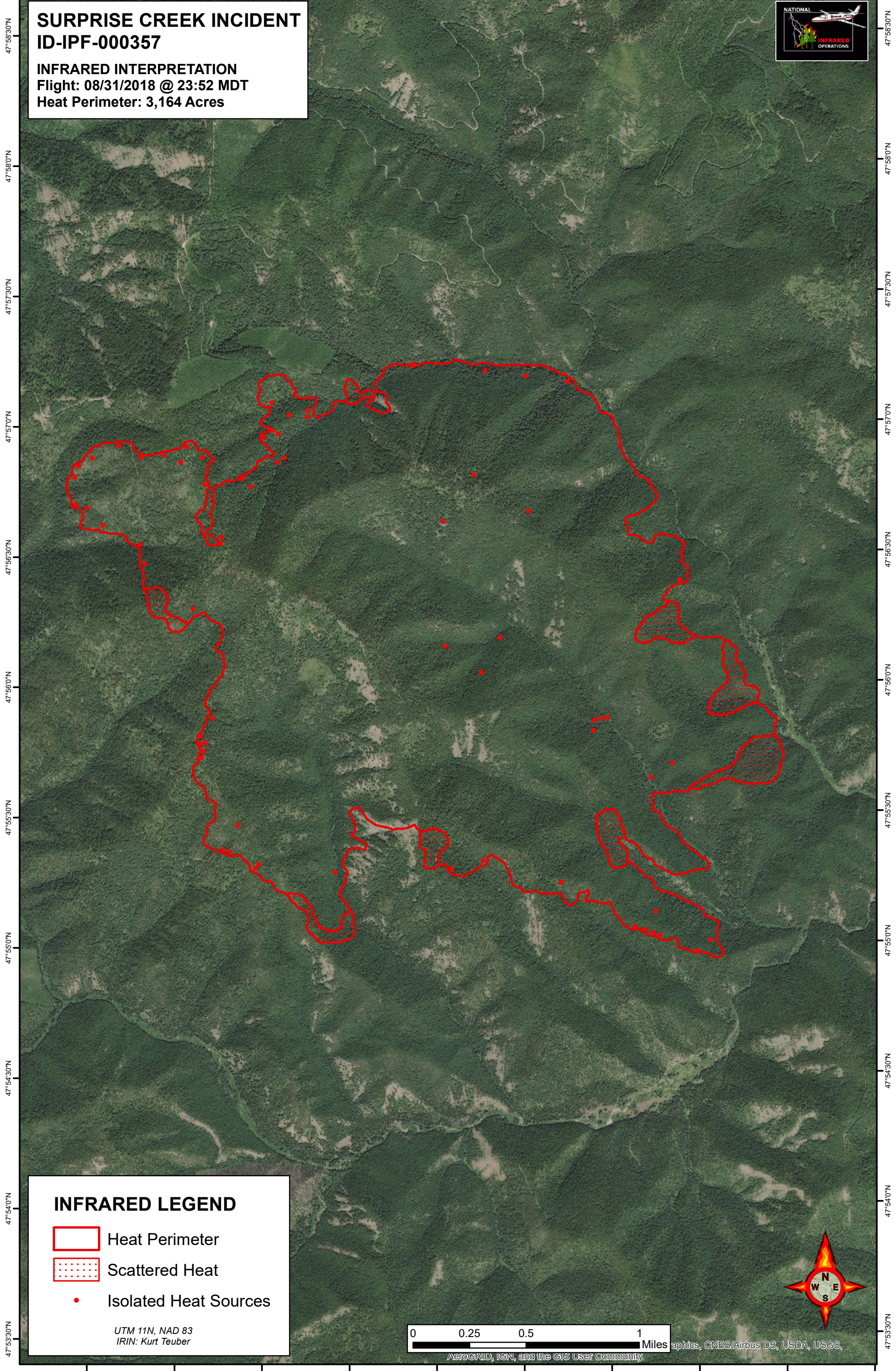





116°21'30"W 116°21'0"W 116°20'30"W 116°20'0"W 116°19'30"W 116°19'0"W 116°18'30"W 116°18'0"W 116°17'30"W 116°17'0"W

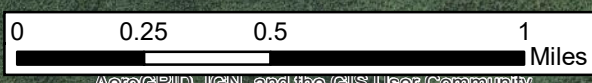
**SURPRISE CREEK INCIDENT**  
**ID-IPF-000357**  
**INFRARED INTERPRETATION**  
Flight: 08/31/2018 @ 23:52 MDT  
Heat Perimeter: 3,164 Acres



**INFRARED LEGEND**

-  Heat Perimeter
-  Scattered Heat
-  Isolated Heat Sources

UTM 11N, NAD 83  
IRIN: Kurt Teuber



graphics, CNES/Airbus DS, USDA, USGS, AeroGRID, IGN, and the GIS User Community

116°21'30"W 116°21'0"W 116°20'30"W 116°20'0"W 116°19'30"W 116°19'0"W 116°18'30"W 116°18'0"W 116°17'30"W 116°17'0"W

47°53'30"N

47°54'0"N

47°54'30"N

47°55'0"N

47°55'30"N

47°56'0"N

47°56'30"N

47°57'0"N

47°57'30"N

47°58'0"N

47°58'30"N

47°53'30"N

47°54'0"N

47°54'30"N

47°55'0"N

47°55'30"N

47°56'0"N

47°56'30"N

47°57'0"N

47°57'30"N

47°58'0"N

47°58'30"N