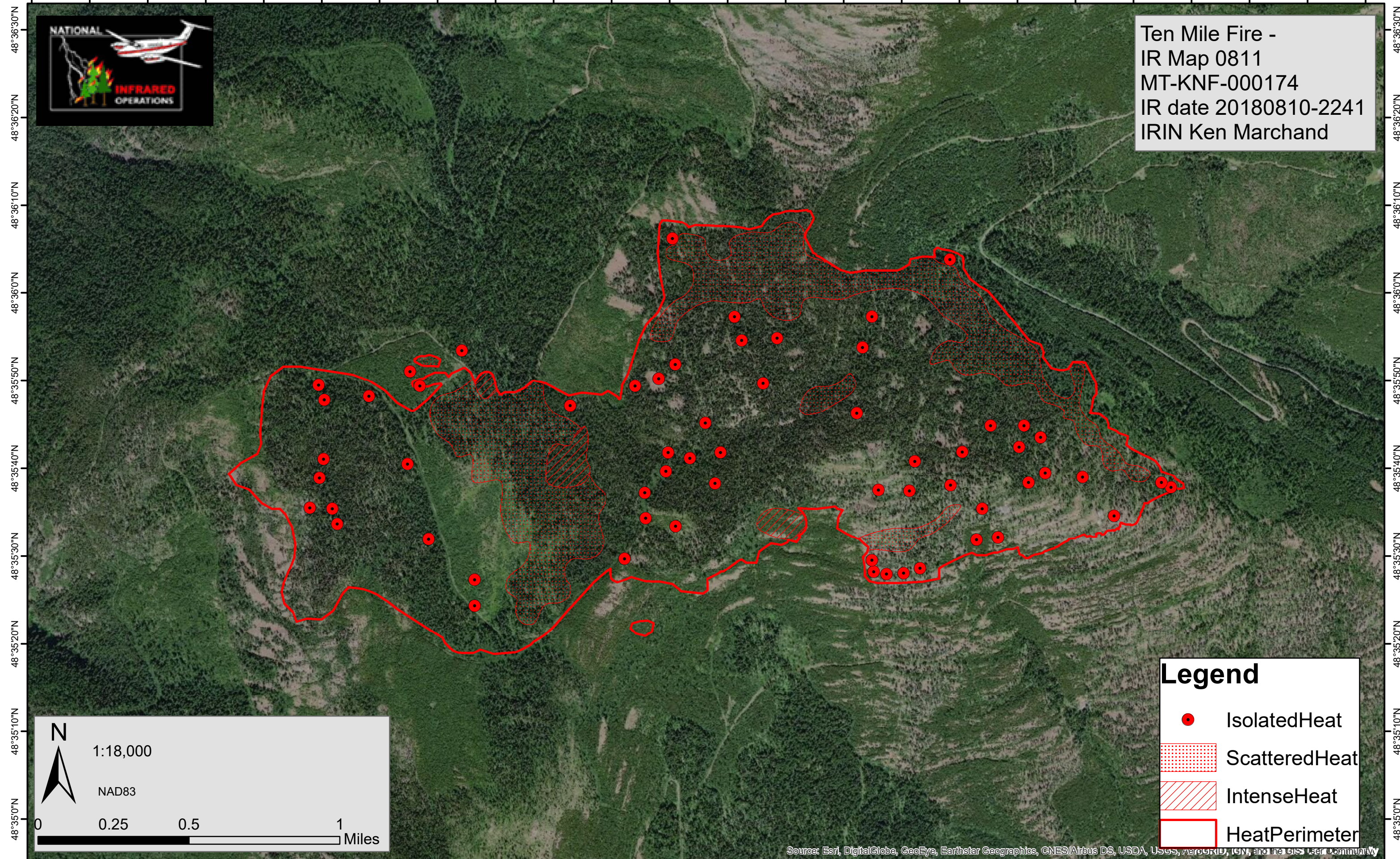


115°10'40"W 115°10'30"W 115°10'20"W 115°10'10"W 115°10'0"W 115°9'50"W 115°9'40"W 115°9'30"W 115°9'20"W 115°9'10"W 115°9'0"W 115°8'50"W 115°8'40"W 115°8'30"W 115°8'20"W 115°8'10"W 115°8'0"W 115°7'50"W 115°7'40"W 115°7'30"W 115°7'20"W 115°7'10"W 115°7'0"W 115°6'50"W



Ten Mile Fire -
IR Map 0811
MT-KNF-000174
IR date 20180810-2241
IRIN Ken Marchand



48°35'0"N 48°35'10"N 48°35'20"N 48°35'30"N 48°35'40"N 48°35'50"N 48°36'0"N 48°36'10"N 48°36'20"N 48°36'30"N

N
1:18,000
NAD83
0 0.25 0.5 1 Miles

Legend

- IsolatedHeat
- ▨ ScatteredHeat
- ▨ IntenseHeat
- ▭ HeatPerimeter

Source: Esri, DigitalGlobe, GeoEye, Earthstar Geographics, CNES/Airbus DS, USDA, USGS, AeroGRID, IGN, and the GIS User Community

115°10'40"W 115°10'30"W 115°10'20"W 115°10'10"W 115°10'0"W 115°9'50"W 115°9'40"W 115°9'30"W 115°9'20"W 115°9'10"W 115°9'0"W 115°8'50"W 115°8'40"W 115°8'30"W 115°8'20"W 115°8'10"W 115°8'0"W 115°7'50"W 115°7'40"W 115°7'30"W 115°7'20"W 115°7'10"W 115°7'0"W 115°6'50"W