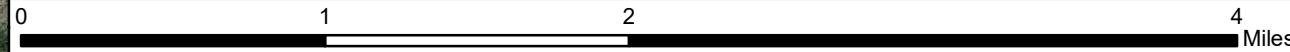
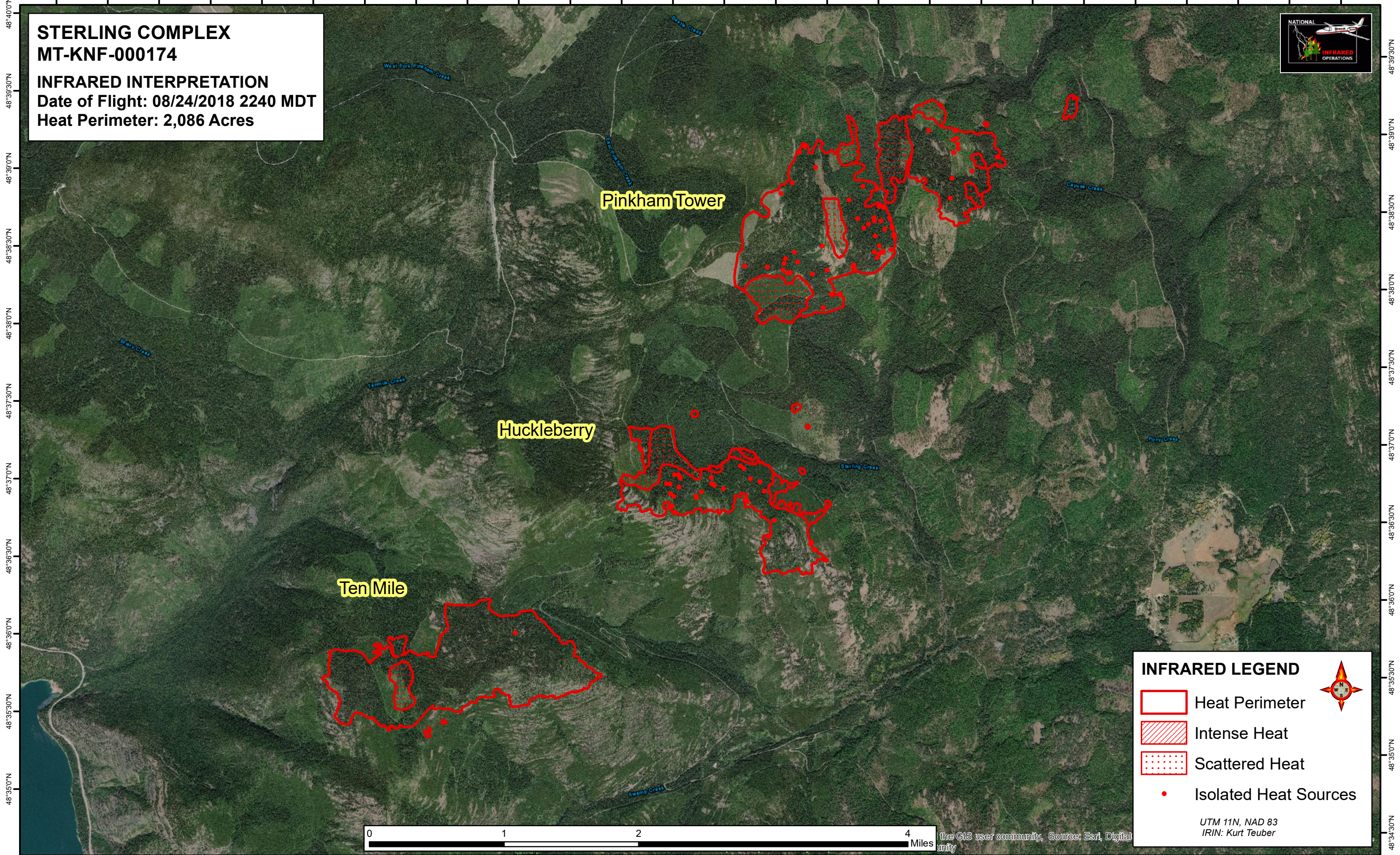






115°12'30"W 115°12'0"W 115°11'30"W 115°11'0"W 115°10'30"W 115°10'0"W 115°9'30"W 115°9'0"W 115°8'30"W 115°8'0"W 115°7'30"W 115°7'0"W 115°6'30"W 115°6'0"W 115°5'30"W 115°5'0"W 115°4'30"W 115°4'0"W 115°3'30"W 115°3'0"W 115°2'30"W 115°2'0"W 115°1'30"W 115°1'0"W 115°0'30"W 115°0'0"W

STERLING COMPLEX
MT-KNF-000174
INFRARED INTERPRETATION
Date of Flight: 08/24/2018 2240 MDT
Heat Perimeter: 2,086 Acres



the GIS user community, Source: Esri, Digital
Unity

INFRARED LEGEND

-  Heat Perimeter
-  Intense Heat
-  Scattered Heat
-  Isolated Heat Sources

UTM 11N, NAD 83
IRIN: Kurt Teuber

115°13'0"W 115°12'30"W 115°12'0"W 115°11'30"W 115°11'0"W 115°10'30"W 115°10'0"W 115°9'30"W 115°9'0"W 115°8'30"W 115°8'0"W 115°7'30"W 115°7'0"W 115°6'30"W 115°6'0"W 115°5'30"W 115°5'0"W 115°4'30"W 115°4'0"W 115°3'30"W 115°3'0"W 115°2'30"W 115°2'0"W 115°1'30"W 115°1'0"W 115°0'30"W 115°0'0"W