

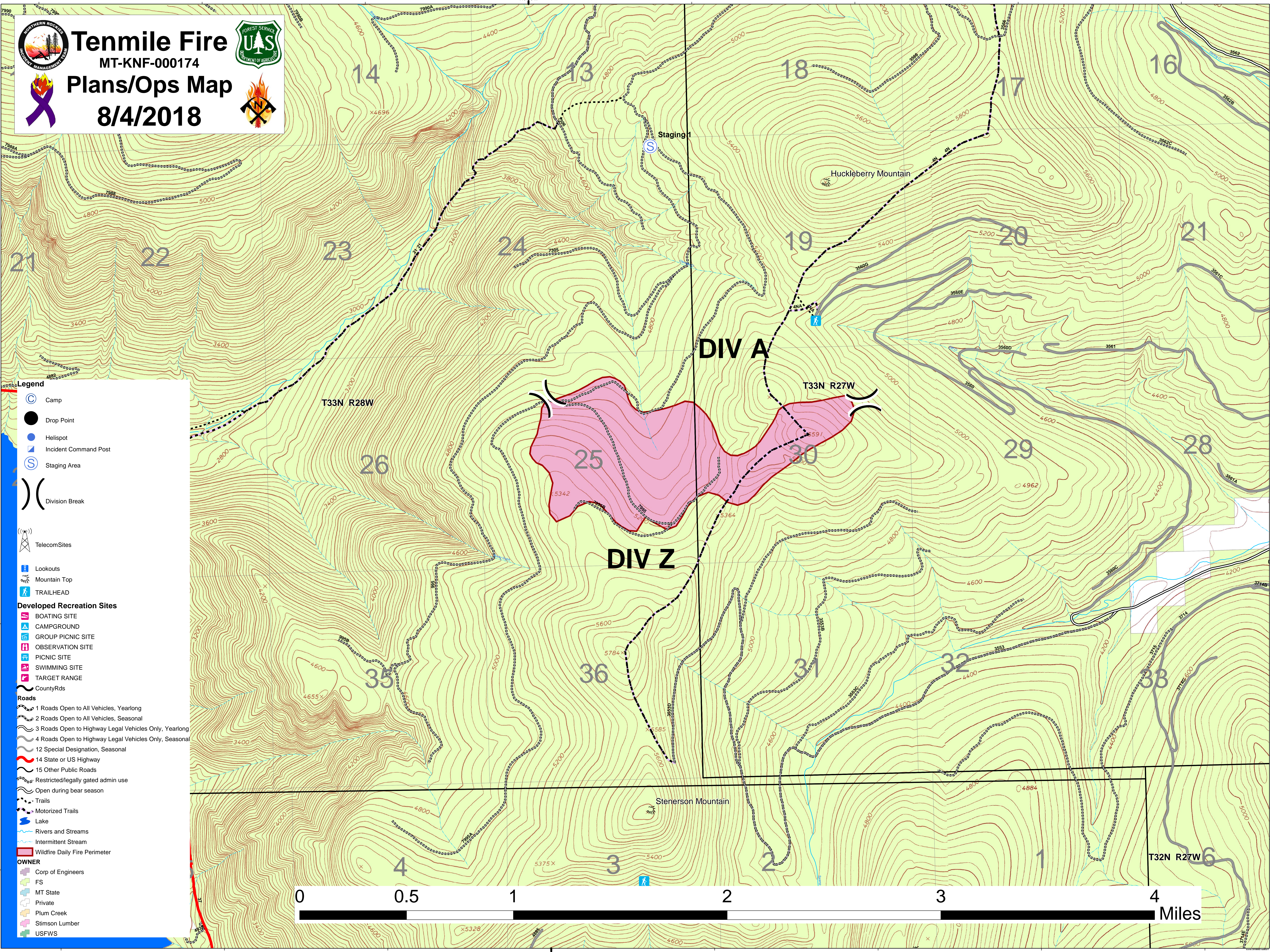


Tenmile Fire

MT-KNF-000174

Plans/Ops Map

8/4/2018



Legend

- Camp
- Drop Point
- Helispot
- Incident Command Post
- Staging Area
- Division Break
- Telecom Sites
- Lookouts
- Mountain Top
- TRAILHEAD
- Developed Recreation Sites**
- BOATING SITE
- CAMPGROUND
- GROUP PICNIC SITE
- OBSERVATION SITE
- PICNIC SITE
- SWIMMING SITE
- TARGET RANGE
- County Rds
- Roads**
- 1 Roads Open to All Vehicles, Yearlong
- 2 Roads Open to All Vehicles, Seasonal
- 3 Roads Open to Highway Legal Vehicles Only, Yearlong
- 4 Roads Open to Highway Legal Vehicles Only, Seasonal
- 12 Special Designation, Seasonal
- 14 State or US Highway
- 15 Other Public Roads
- Restricted/legally gated admin use
- Open during bear season
- Trails
- Motorized Trails
- Lake
- Rivers and Streams
- Intermittent Stream
- Wildfire Daily Fire Perimeter
- OWNER**
- Corp of Engineers
- FS
- MT State
- Private
- Plum Creek
- Stimson Lumber
- USFWS

