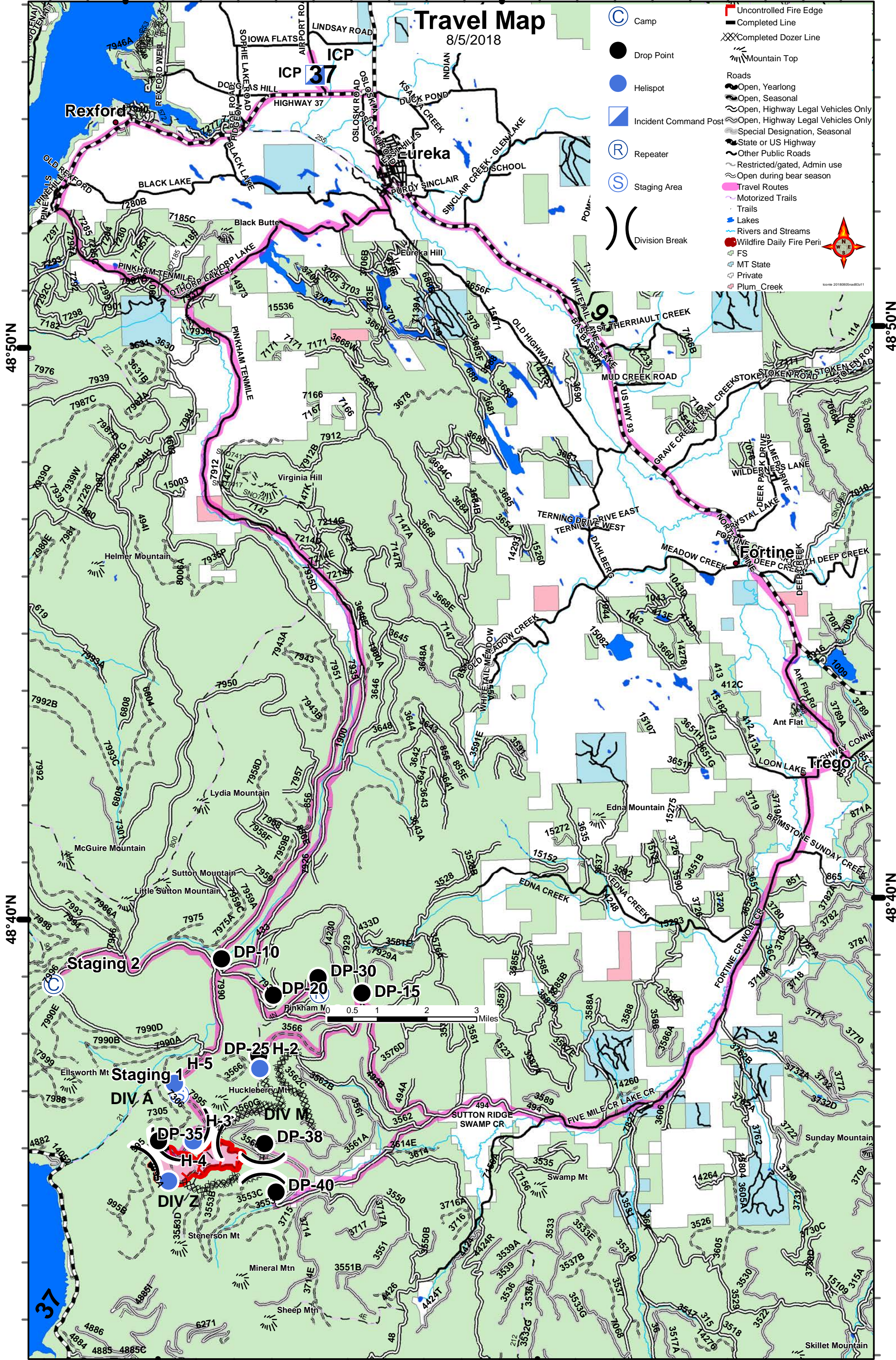


115°10'W

115°0'W

Travel Map

8/5/2018



- C Camp
- Drop Point
- Helispot
- ◻ Incident Command Post
- R Repeater
- S Staging Area
-) Division Break
- ▭ Uncontrolled Fire Edge
- ▭ Completed Line
- X Completed Dozer Line
- ▲ Mountain Top
- Roads
 - Open, Yearlong
 - Open, Seasonal
 - Open, Highway Legal Vehicles Only
 - Open, Highway Legal Vehicles Only
 - Special Designation, Seasonal
 - State or US Highway
 - Other Public Roads
 - Restricted/gated, Admin use
 - Open during bear season
- Travel Routes
 - Motorized Trails
 - Trails
- Lakes
- Rivers and Streams
- Wildfire Daily Fire Period
- FS
- MT State
- Private
- Plum_Creek



48°50'N

48°50'N

48°40'N

48°40'N

115°10'W

115°0'W