



Tenmile Fire

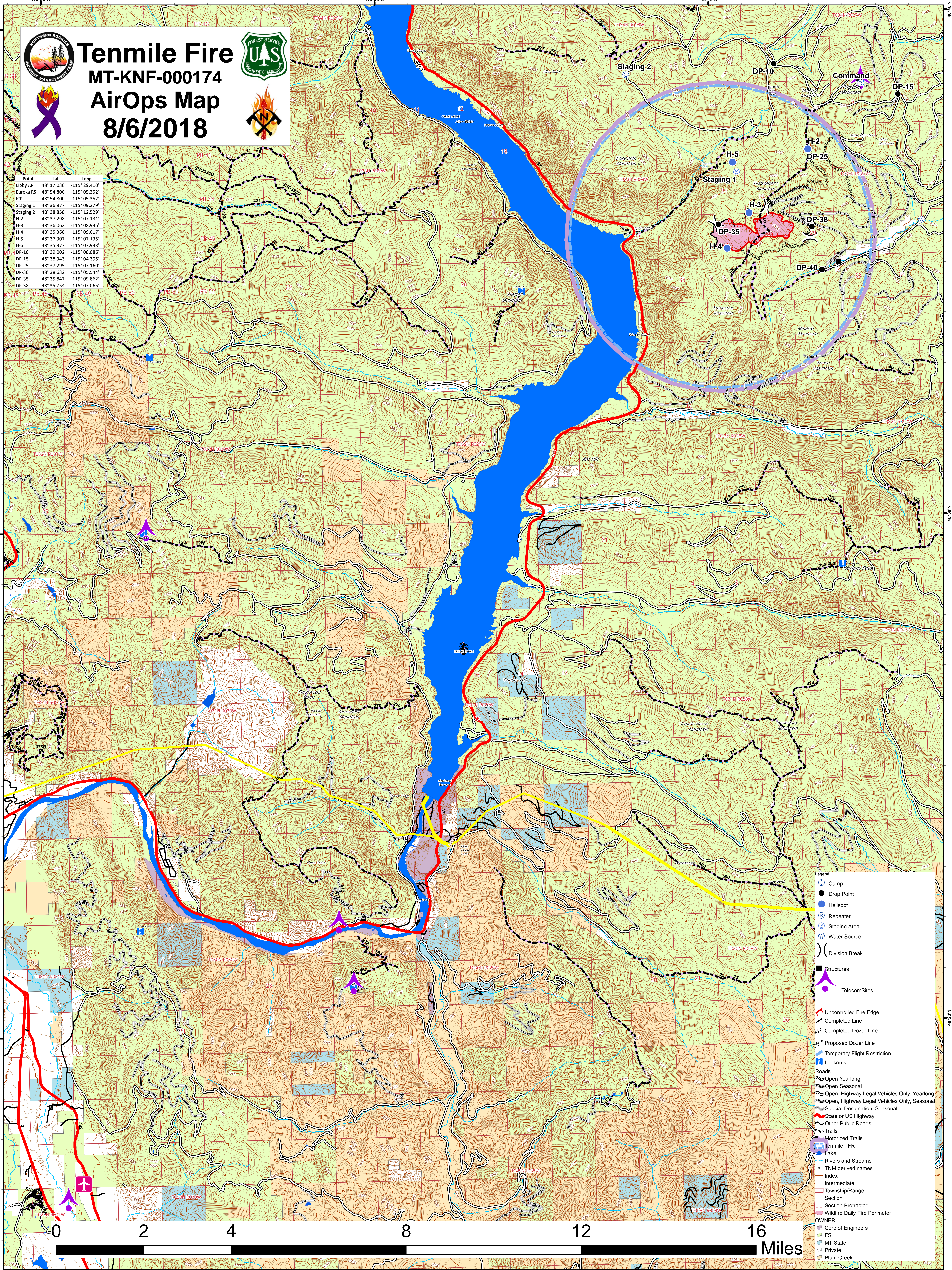
MT-KNF-000174

AirOps Map

8/6/2018



Point	Lat	Long
Libby AP	48° 17.030'	-115° 29.410'
Eureka RS	48° 54.800'	-115° 05.352'
ICP	48° 54.800'	-115° 05.352'
Staging 1	48° 36.877'	-115° 09.279'
Staging 2	48° 38.858'	-115° 12.529'
H-2	48° 37.298'	-115° 07.131'
H-3	48° 36.062'	-115° 08.936'
H-4	48° 35.368'	-115° 09.617'
H-5	48° 37.307'	-115° 07.135'
H-6	48° 35.377'	-115° 07.933'
DP-10	48° 39.002'	-115° 08.086'
DP-15	48° 38.343'	-115° 04.395'
DP-25	48° 37.295'	-115° 07.160'
DP-30	48° 38.632'	-115° 05.544'
DP-35	48° 35.847'	-115° 09.862'
DP-38	48° 35.754'	-115° 07.065'



Legend

- Camp
- Drop Point
- Helispot
- Repeater
- Staging Area
- Water Source
- Division Break
- Structures
- Telecom Sites
- Uncontrolled Fire Edge
- Completed Line
- Completed Dozer Line
- Proposed Dozer Line
- Temporary Flight Restriction
- Lookouts
- Roads
 - Open Yearlong
 - Open Seasonal
 - Open, Highway Legal Vehicles Only, Yearlong
 - Open, Highway Legal Vehicles Only, Seasonal
 - Special Designation, Seasonal
 - State or US Highway
 - Other Public Roads
 - Trails
 - Motorized Trails
 - Tenmile TFR
 - Lake
 - Rivers and Streams
 - TNM derived names
- Index
- Intermediate
- Township/Range
- Section
- Section Protracted
- Wildfire Daily Fire Perimeter
- OWNER
 - Corp of Engineers
 - FS
 - MT State
 - Private
 - Plum Creek

