

115°10'W

115°0'W

114°50'W

48°50'N

48°50'N

48°40'N

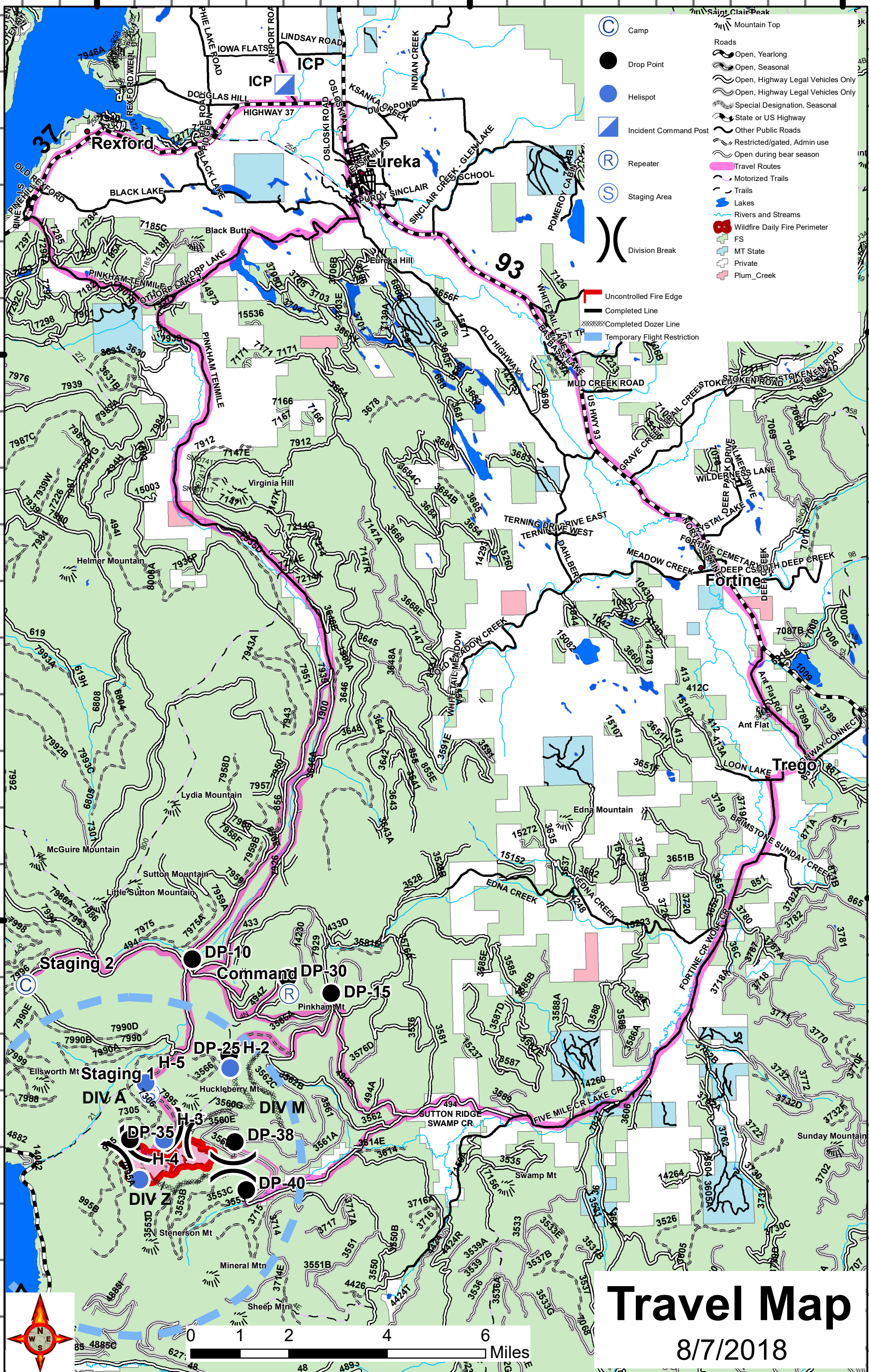
48°40'N

115°10'W

115°0'W

- Camp
- Drop Point
- Helispot
- Incident Command Post
- Repeater
- Staging Area
- Division Break
- Mountain Top
- Roads
 - Open, Yearlong
 - Open, Seasonal
 - Open, Highway Legal Vehicles Only
 - Open, Highway Legal Vehicles Only
 - Special Designation, Seasonal
 - State or US Highway
 - Other Public Roads
 - Restricted/gated, Admin use
 - Open during bear season
- Travel Routes
- Trails
- Lakes
- Rivers and Streams
- Wildfire Daily Fire Perimeter
- FS
- MT State
- Private
- Plum_Creek

- Uncontrolled Fire Edge
- Completed Line
- Completed Dozer Line
- Temporary Flight Restriction



Travel Map

8/7/2018