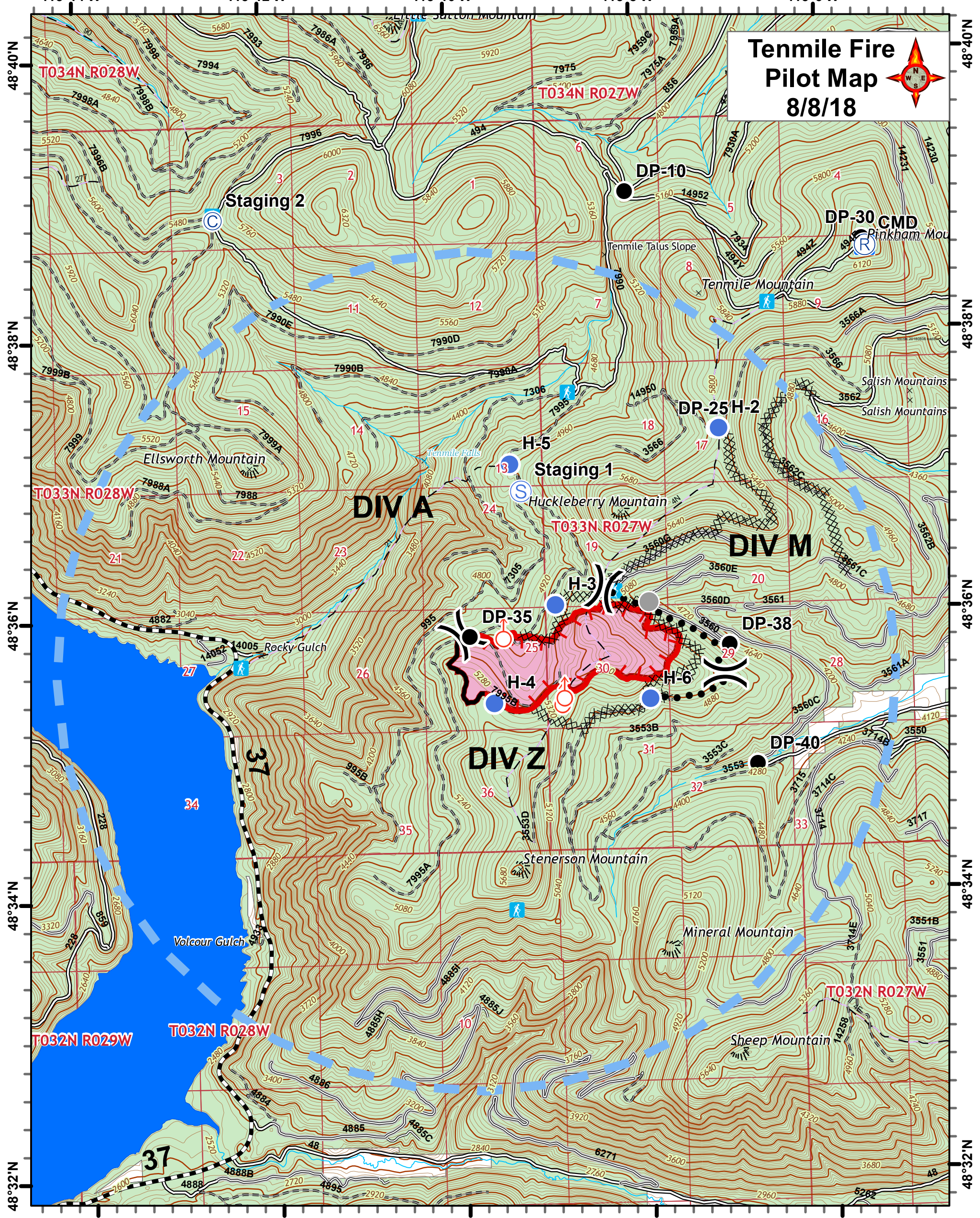


# Tenmile Fire Pilot Map 8/8/18

- Camp
- Drop Point
- Helispot
- Repeater
- Spot Fire
- Staging Area
- Other
- Uncontrolled Fire Edge
- Completed Line
- Completed Dozer Line
- Planned Secondary Line
- Temporary Flight Restriction
- Mountain Top
- Lookouts
- TRAILHEAD
- Developed Recreation Sites
- BOATING SITE
- CAMPGROUND
- Roads
  - Open, Yearlong
  - Open, Seasonal
  - Open, Hwy Legal Vehicles Only
  - Open, Hwy Legal Vehicles Only
  - Special Designation, Seasonal
  - State or US Highway
  - Other Public Roads
  - Restricted/gated, Admin use
  - Open during bear season
  - Motorized Trails
  - Trails
  - Lakes
  - Rivers and Streams
  - Wildfire Daily Fire Perimeter
- FS
- MT State
- Private
- Plum\_Creek

Point	Lat	Long		Lat	Long
Libby AP	48° 17.030'	-115° 29.410'	H-6	48° 35.377'	-115° 07.933'
Eureka RS	48° 54.800'	-115° 05.352'	DP-10	48° 39.002'	-115° 08.086'
ICP	48° 54.800'	-115° 05.352'	DP-15	48° 38.343'	-115° 04.395'
Staging 1	48° 36.877'	-115° 09.279'	DP-25	48° 37.295'	-115° 07.160'
Staging 2	48° 38.858'	-115° 12.529'	DP-30	48° 38.632'	-115° 05.544'
H-2	48° 37.298'	-115° 07.131'	DP-35	48° 35.847'	-115° 09.862'
H-3	48° 36.062'	-115° 08.936'	DP-38	48° 35.754'	-115° 07.065'
H-4	48° 35.368'	-115° 09.617'	DP-40	48° 34.899'	-115° 06.796'
H-5	48° 37.307'	-115° 07.135'	CMD Rptr	48° 38.585'	-115° 05.510'

