

# Travel Map

8/8/2018

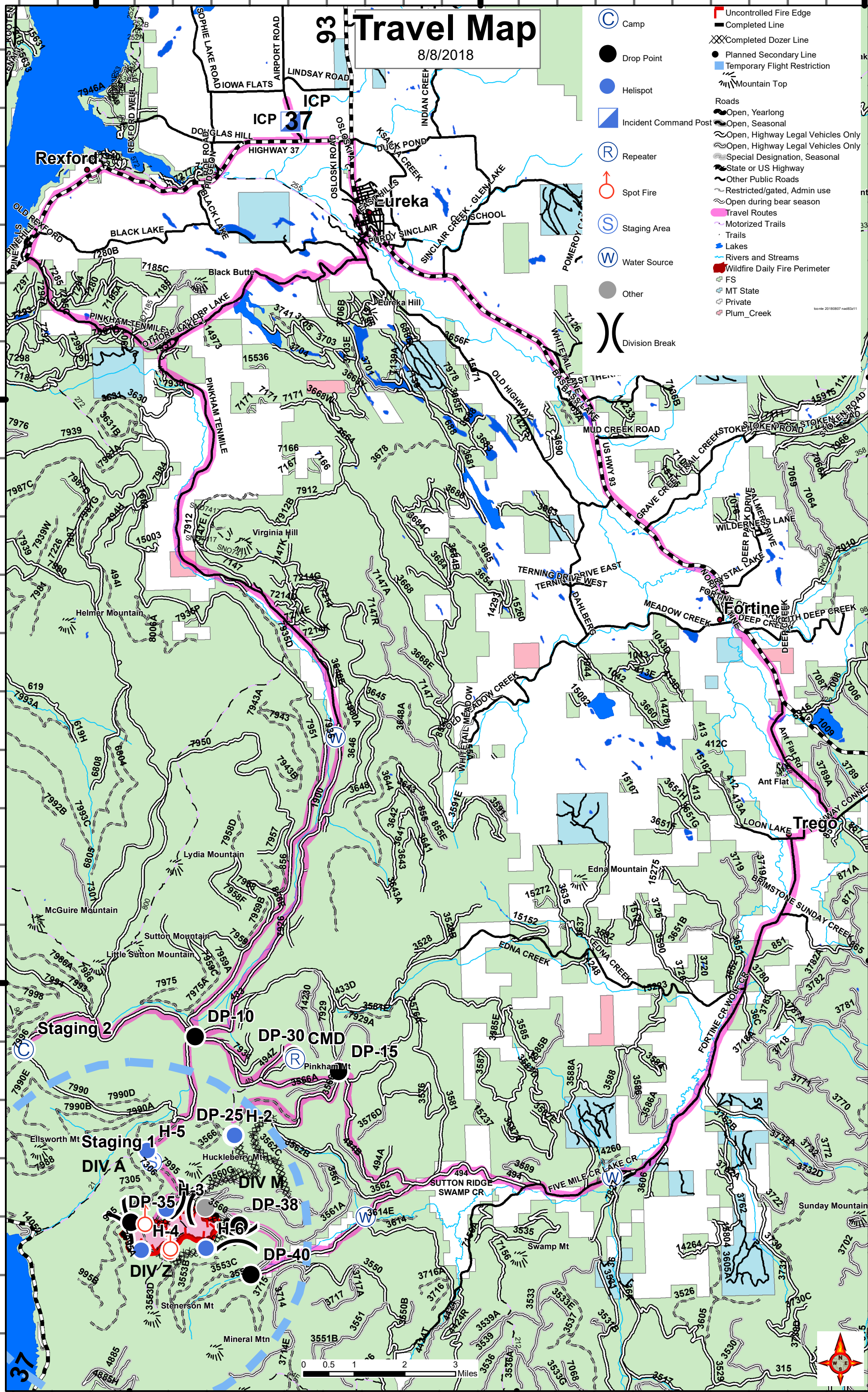
- Camp
  - Drop Point
  - Helispot
  - Incident Command Post
  - Repeater
  - Spot Fire
  - Staging Area
  - Water Source
  - Other
  - Division Break
  - Uncontrolled Fire Edge
  - Completed Line
  - Completed Dozer Line
  - Planned Secondary Line
  - Temporary Flight Restriction
  - Mountain Top
- Roads
- Open, Yearlong
  - Open, Seasonal
  - Open, Highway Legal Vehicles Only
  - Special Designation, Seasonal
  - State or US Highway
  - Other Public Roads
  - Restricted/gated, Admin use
  - Open during bear season
  - Travel Routes
  - Motorized Trails
  - Trails
- Lakes
- Lakes
  - Rivers and Streams
  - Wildfire Daily Fire Perimeter
  - FS
  - MT State
  - Private
  - Plum\_Creek

48°50'N

48°50'N

48°40'N

48°40'N



0 0.5 1 2 3 Miles

