

115°10'W

115°0'W

114°50'W

48°50'N

48°50'N

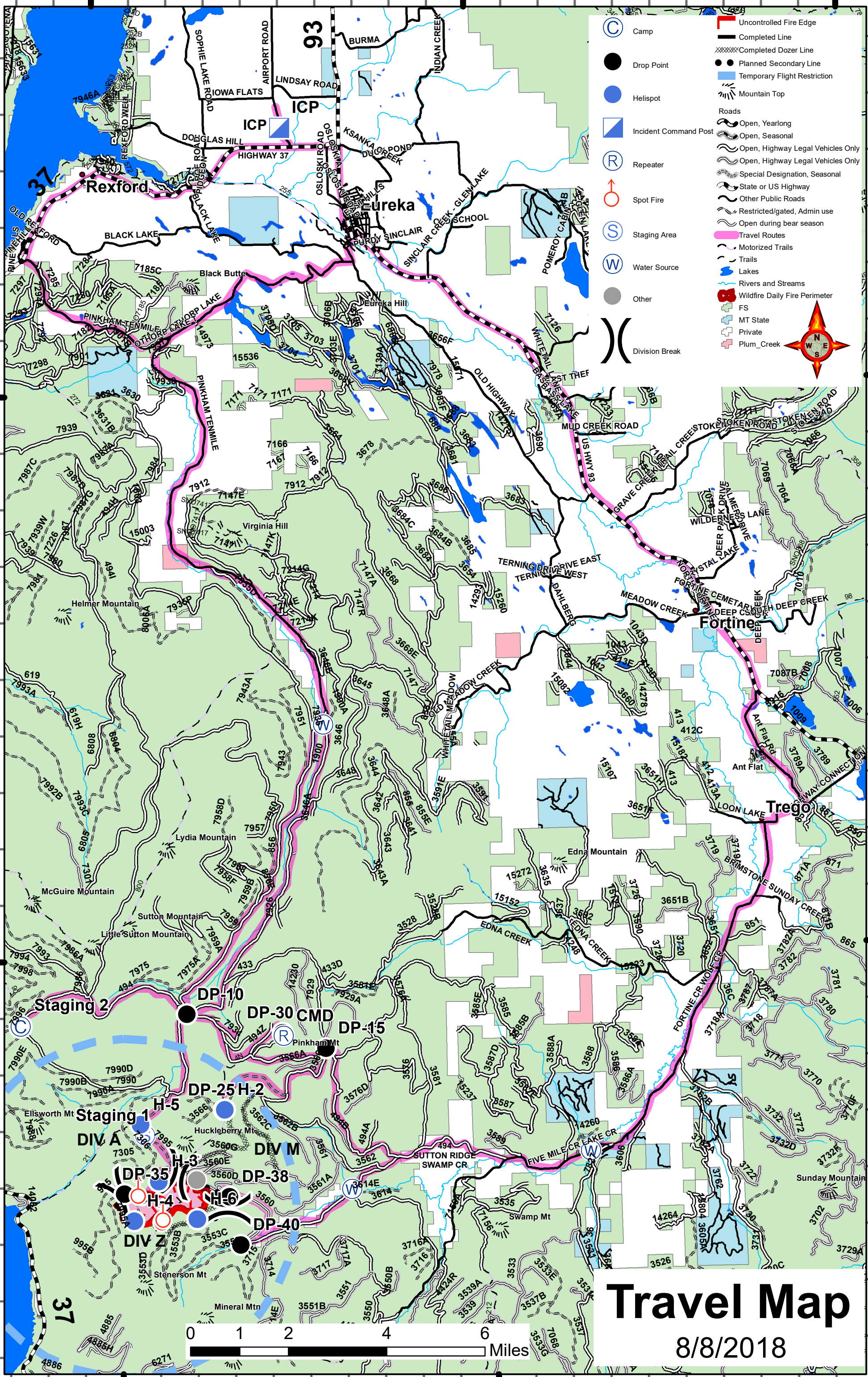
48°40'N

48°40'N

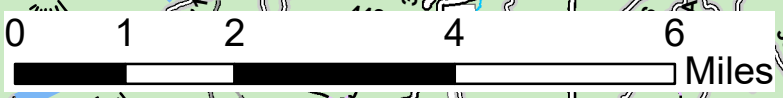
115°10'W

115°0'W

tconte 20180807 nad83z11



- C Camp
- Drop Point
- Helispot
- Incident Command Post
- R Repeater
- Spot Fire
- S Staging Area
- W Water Source
- Other
- Division Break
- Uncontrolled Fire Edge
- Completed Line
- Completed Dozer Line
- Planned Secondary Line
- Temporary Flight Restriction
- Mountain Top
- Roads
  - Open, Yearlong
  - Open, Seasonal
  - Open, Highway Legal Vehicles Only
  - Open, Highway Legal Vehicles Only
  - Special Designation, Seasonal
  - State or US Highway
  - Other Public Roads
  - Restricted/gated, Admin use
  - Open during bear season
- Travel Routes
  - Motorized Trails
  - Trails
- Lakes
- Rivers and Streams
- Wildfire Daily Fire Perimeter
- FS
- MT State
- Private
- Plum\_Creek



**Travel Map**  
8/8/2018