



Tenmile Fire

MT-KNF-000174

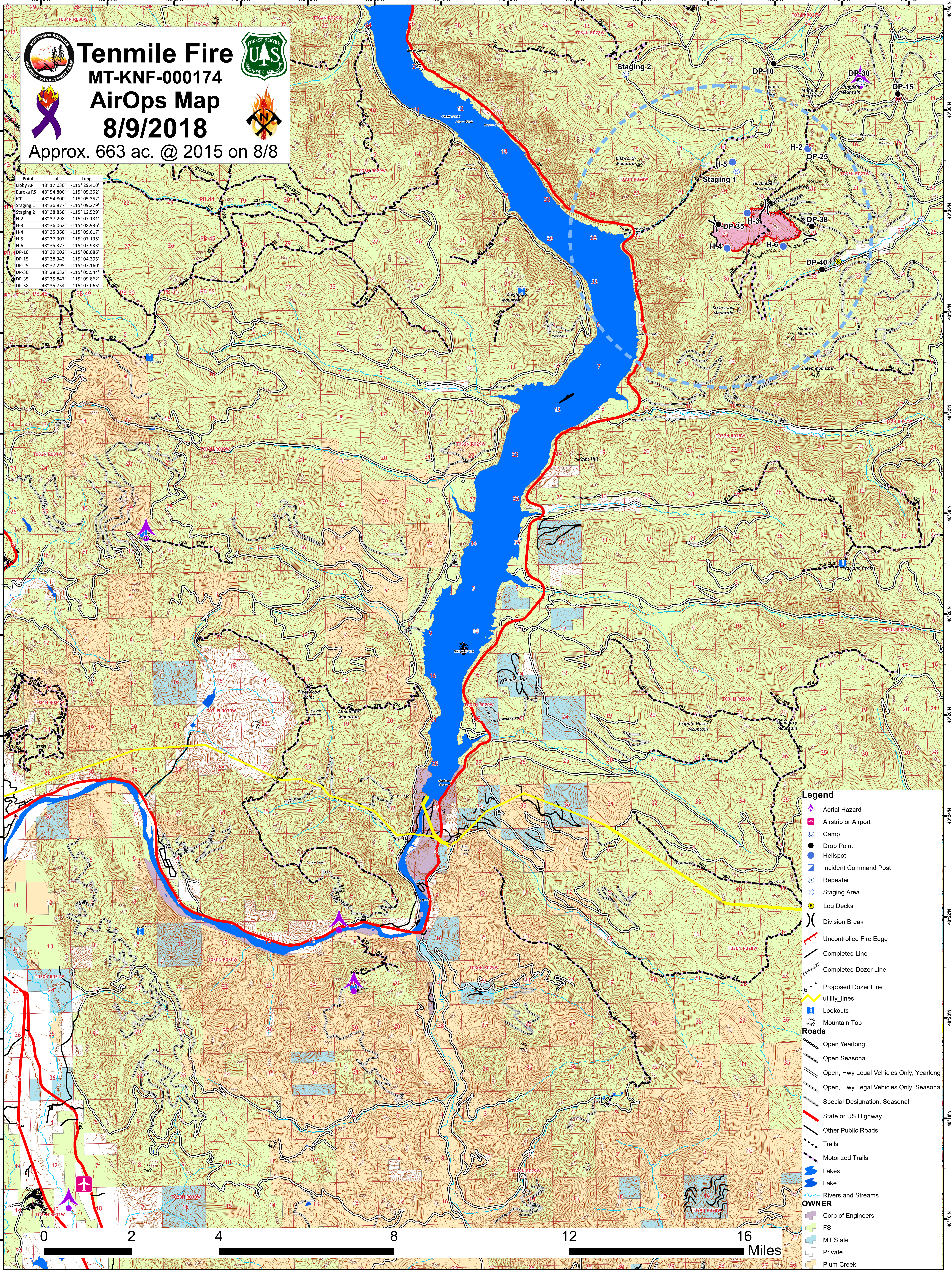
AirOps Map

8/9/2018

Approx. 663 ac. @ 2015 on 8/8



Point	Lat	Long
Libby AP	48° 17.030'	-115° 29.410'
Eureka RS	48° 54.800'	-115° 05.352'
ICP	48° 54.800'	-115° 05.352'
Staging 1	48° 36.877'	-115° 09.279'
Staging 2	48° 38.858'	-115° 12.529'
H-2	48° 37.298'	-115° 07.131'
H-3	48° 36.062'	-115° 08.935'
H-4	48° 35.368'	-115° 09.617'
H-5	48° 37.307'	-115° 07.135'
H-6	48° 35.377'	-115° 07.933'
DP-10	48° 39.002'	-115° 08.086'
DP-15	48° 38.343'	-115° 04.395'
DP-25	48° 37.295'	-115° 07.160'
DP-30	48° 38.632'	-115° 05.544'
DP-35	48° 35.847'	-115° 09.862'
DP-38	48° 35.754'	-115° 07.065'



Legend

- Aerial Hazard
- Airstrip or Airport
- Camp
- Drop Point
- Helispot
- Incident Command Post
- Repeater
- Staging Area
- Log Decks
- Division Break
- Uncontrolled Fire Edge
- Completed Line
- Completed Dozer Line
- Proposed Dozer Line
- utility_lines
- Lookouts
- Mountain Top

Roads

- Open Yearlong
- Open Seasonal
- Open, Hwy Legal Vehicles Only, Yearlong
- Open, Hwy Legal Vehicles Only, Seasonal
- Special Designation, Seasonal
- State or US Highway
- Other Public Roads
- Trails
- Motorized Trails

OWNER

- Corp of Engineers
- FS
- MT State
- Private
- Plum Creek

