

115°10'W

115°0'W

114°50'W

Travel Map

8/9/2018

- Wildfire Daily Fire Perimeter
- Camp
- Drop Point
- Helispot
- Incident Command Post
- Repeater
- Spot Fire
- Staging Area
- Water Source
- Division Break
- Uncontrolled Fire Edge
- Completed Line
- Completed Dozer Line
- Planned Secondary Line
- Temporary Flight Restriction
- Mountain Top

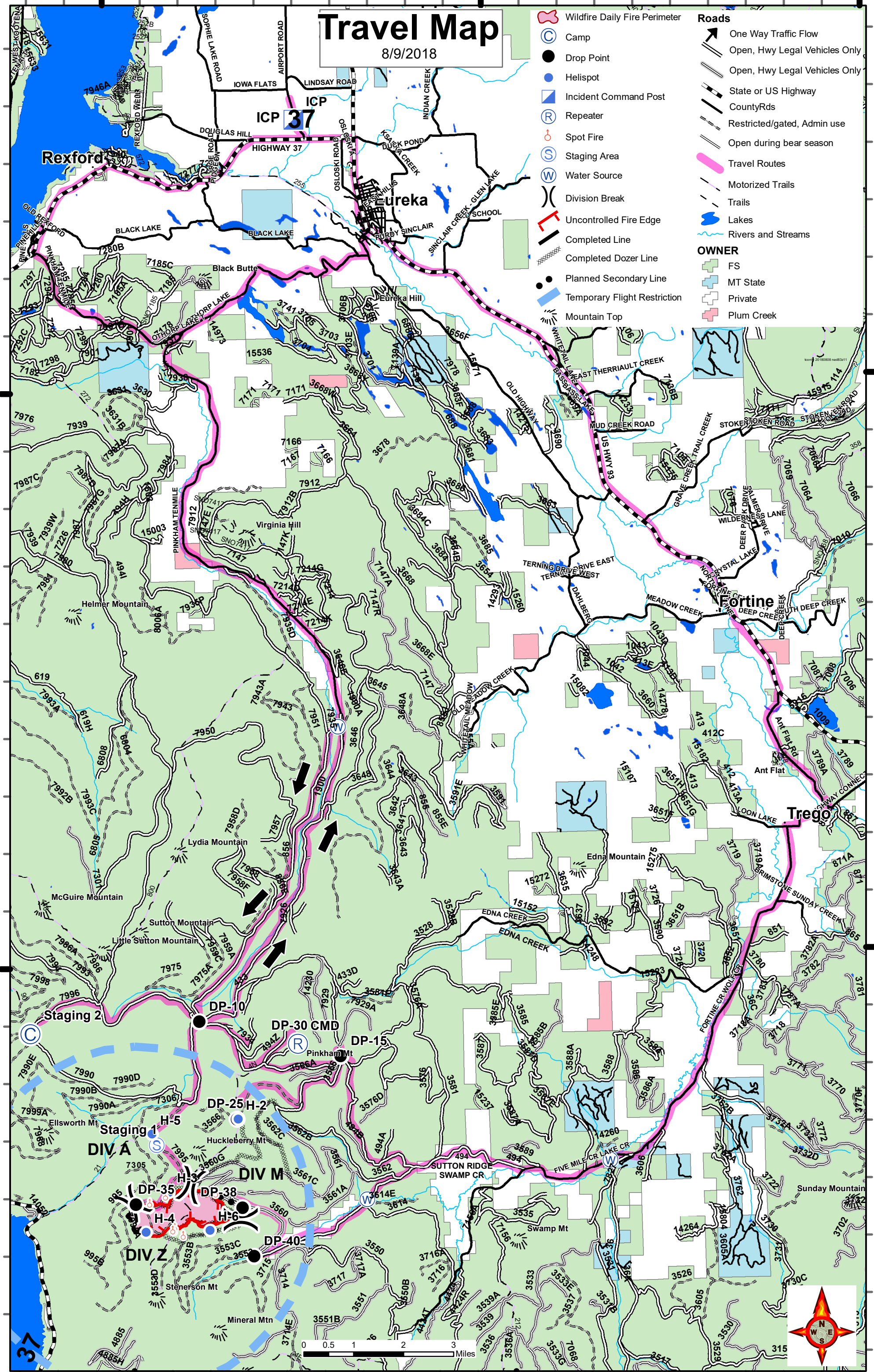
- ### Roads
- One Way Traffic Flow
 - Open, Hwy Legal Vehicles Only
 - Open, Hwy Legal Vehicles Only
 - State or US Highway
 - County Rds
 - Restricted/gated, Admin use
 - Open during bear season
 - Travel Routes
 - Motorized Trails
 - Trails
 - Lakes
 - Rivers and Streams
- ### OWNER
- FS
 - MT State
 - Private
 - Plum Creek

48°50'N

48°50'N

48°40'N

48°40'N



115°10'W

115°0'W