

115°10'W

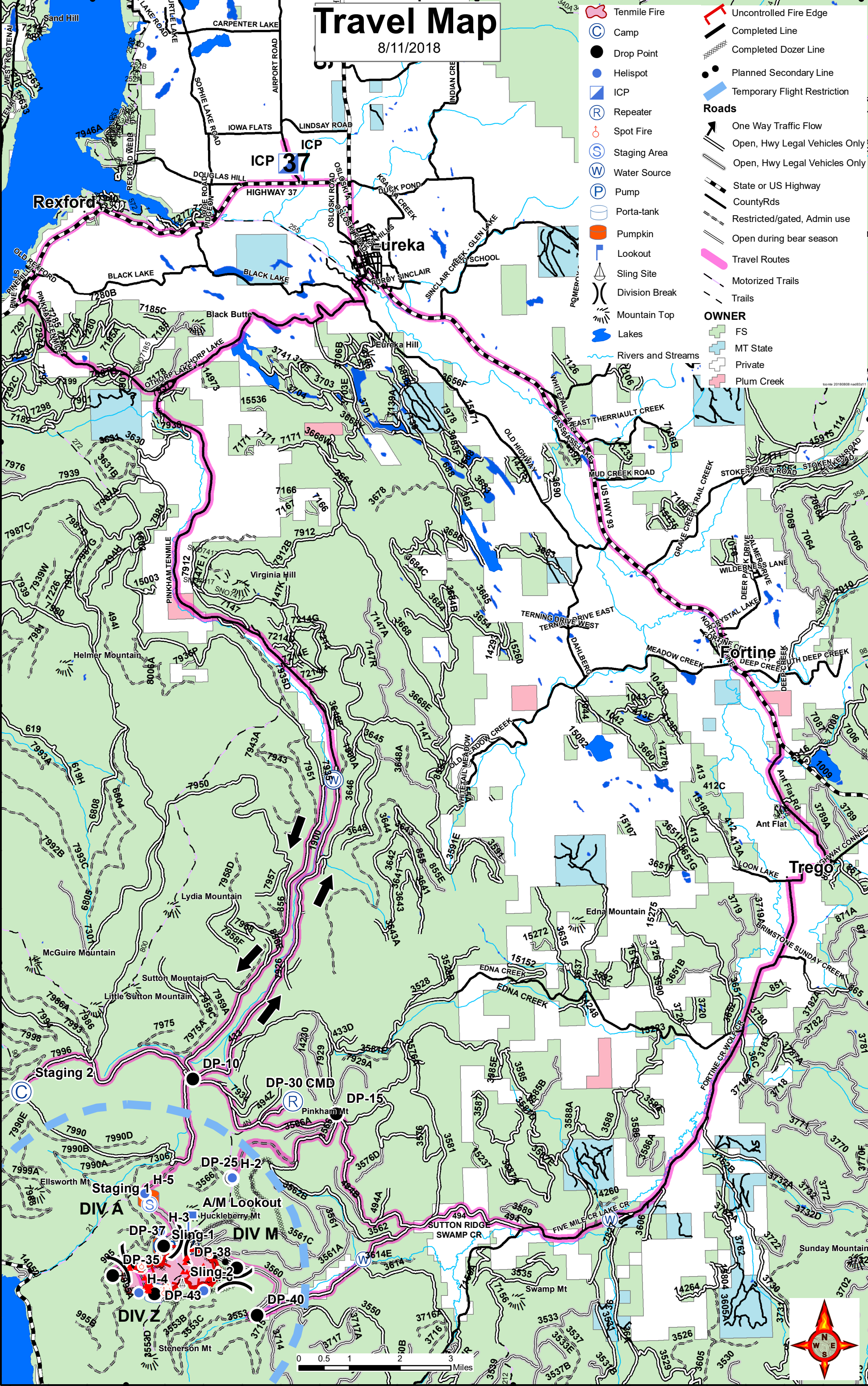
115°0'W

114°50'W

Travel Map

8/11/2018

- Tenmile Fire
 - Camp
 - Drop Point
 - Helispot
 - ICP
 - Repeater
 - Spot Fire
 - Staging Area
 - Water Source
 - Pump
 - Porta-tank
 - Pumpkin
 - Lookout
 - Sling Site
 - Division Break
 - Mountain Top
 - Lakes
 - Rivers and Streams
 - Uncontrolled Fire Edge
 - Completed Line
 - Completed Dozer Line
 - Planned Secondary Line
 - Temporary Flight Restriction
- Roads**
- One Way Traffic Flow
 - Open, Hwy Legal Vehicles Only
 - Open, Hwy Legal Vehicles Only
 - State or US Highway
 - CountyRds
 - Restricted/gated, Admin use
 - Open during bear season
 - Travel Routes
 - Motorized Trails
 - Trails
- OWNER**
- FS
 - MT State
 - Private
 - Plum Creek



48°50'N

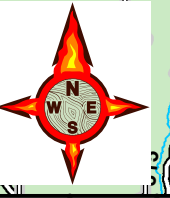
48°50'N

48°40'N

48°40'N

115°10'W

115°0'W



tconte20 180810nad8321