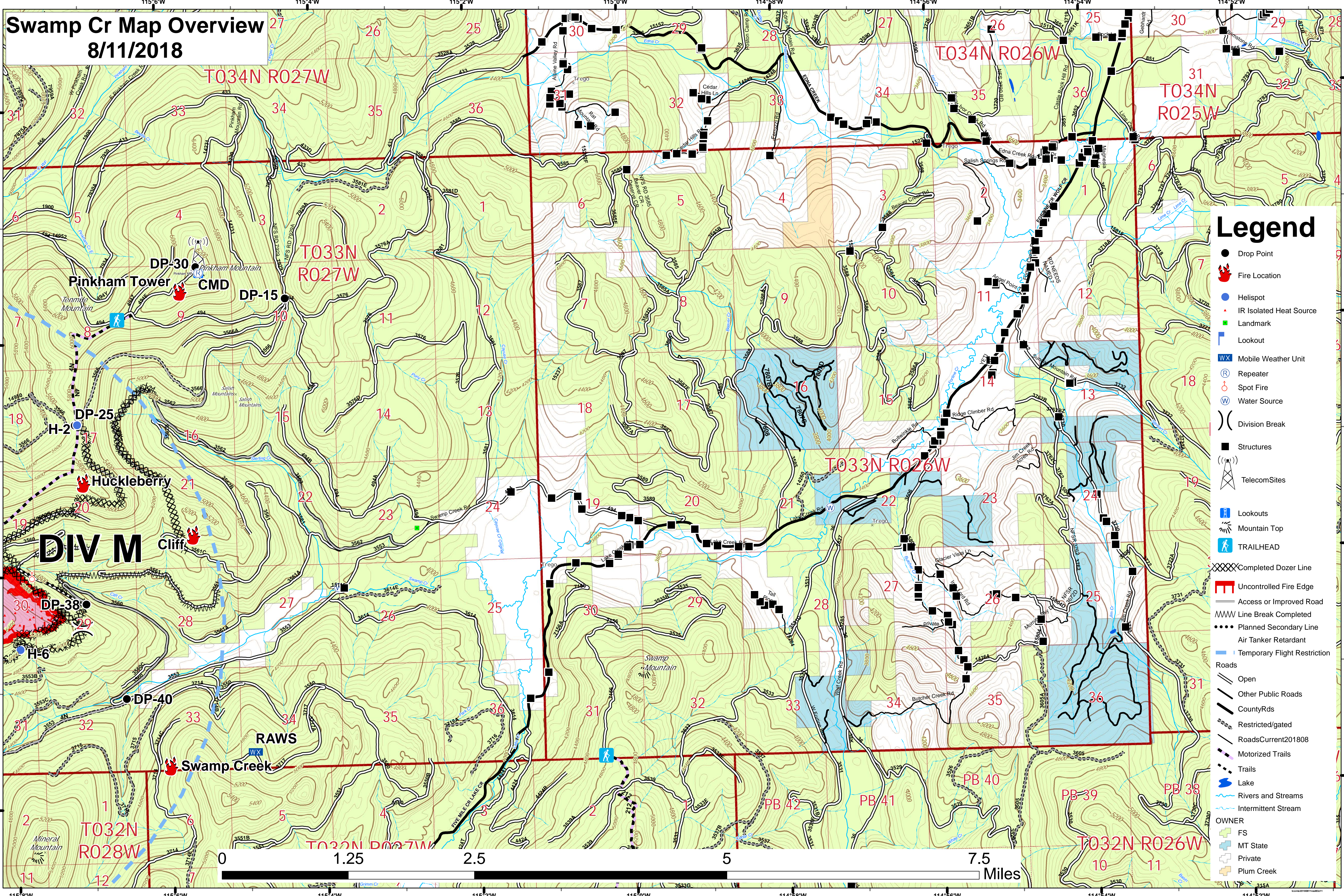


# Swamp Cr Map Overview

## 8/11/2018



### Legend

- Drop Point
- 🔥 Fire Location
- 📍 Helispot
- 🔴 IR Isolated Heat Source
- 📍 Landmark
- 👁️ Lookout
- 🚚 Mobile Weather Unit
- 📡 Repeater
- 🔥 Spot Fire
- 💧 Water Source
- ⎓ Division Break
- 🏠 Structures
- 📡 Telecom Sites
- 👁️ Lookouts
- 🏔️ Mountain Top
- 🚶 TRAILHEAD
- XXXXX Completed Dozer Line
- 🔴 Uncontrolled Fire Edge
- Access or Improved Road
- ⎓ Line Break Completed
- ⋯ Planned Secondary Line
- 🔴 Air Tanker Retardant
- 🚫 Temporary Flight Restriction
- Roads
- Open
- Other Public Roads
- County Rds
- Restricted/gated
- RoadsCurrent201808
- Motorized Trails
- Trails
- 🌊 Lake
- 🌊 Rivers and Streams
- 🌊 Intermittent Stream
- OWNER
- FS
- MT State
- Private
- Plum Creek

