



Tenmile Fire

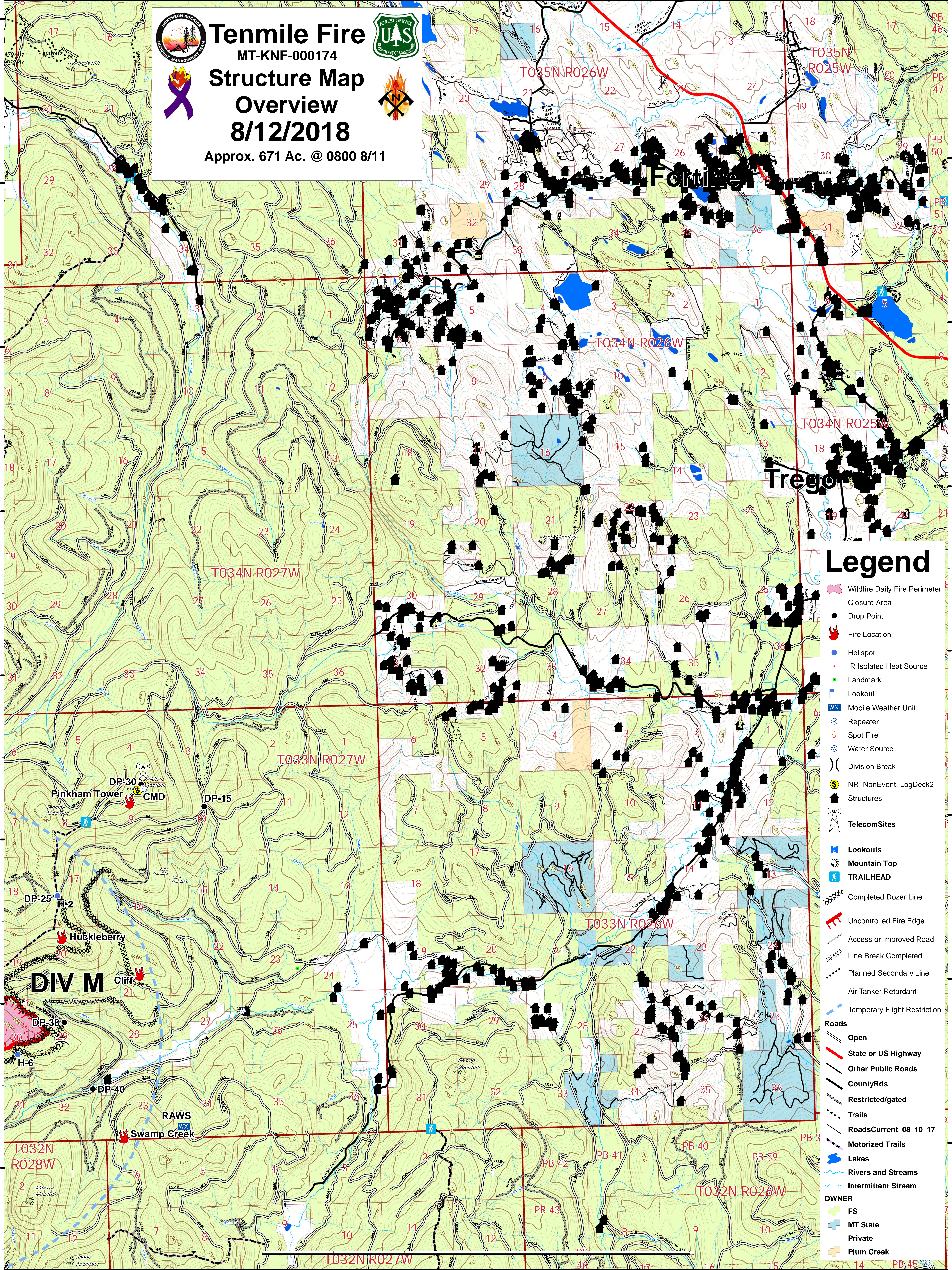
MT-KNF-000174

Structure Map Overview

8/12/2018



Approx. 671 Ac. @ 0800 8/11



Legend

- Wildfire Daily Fire Perimeter
- Closure Area
- Drop Point
- Fire Location
- Helispot
- IR Isolated Heat Source
- Landmark
- Lookout
- Mobile Weather Unit
- Repeater
- Spot Fire
- Water Source
- Division Break
- NR_NonEvent_LogDeck2
- Structures
- TelecomSites
- Lookouts
- Mountain Top
- TRAILHEAD
- Completed Dozer Line
- Uncontrolled Fire Edge
- Access or Improved Road
- Line Break Completed
- Planned Secondary Line
- Air Tanker Retardant
- Temporary Flight Restriction
- Roads**
- Open
- State or US Highway
- Other Public Roads
- CountyRds
- Restricted/gated
- Trails
- RoadsCurrent_08_10_17
- Motorized Trails
- Lakes
- Rivers and Streams
- Intermittent Stream
- OWNER**
- FS
- MT State
- Private
- Plum Creek