



# Tenmile Fire

## MT-KNF-000174

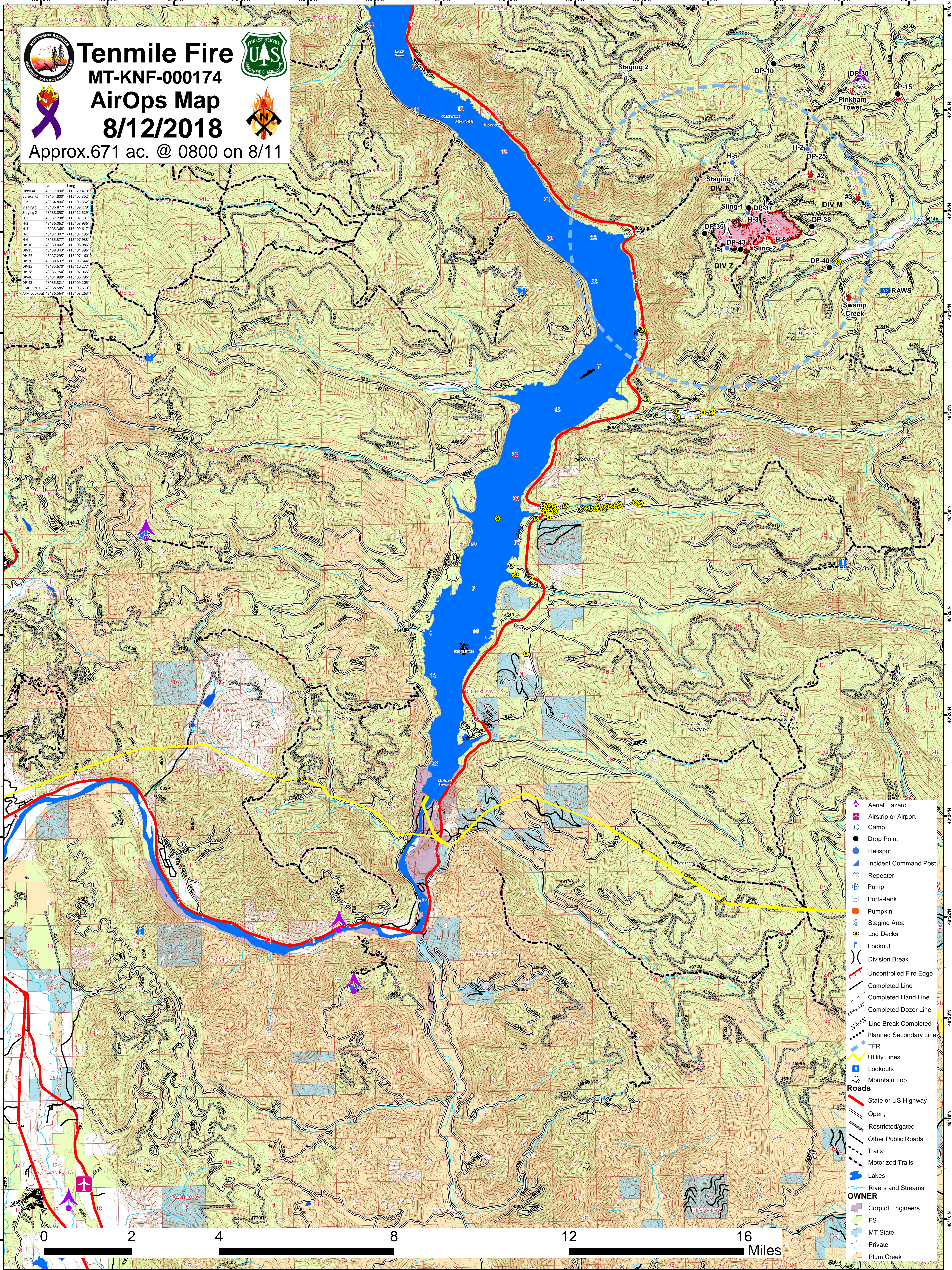
### AirOps Map

### 8/12/2018



Approx. 671 ac. @ 0800 on 8/11

Point	Lat	Long
Libby AP	48° 17.030'	-115° 29.410'
Evans RS	48° 54.800'	-115° 09.352'
ICP	48° 54.800'	-115° 09.352'
Staging 1	48° 36.877'	-115° 09.279'
Staging 2	48° 38.858'	-115° 12.529'
H-1	48° 37.296'	-115° 07.181'
H-3	48° 36.062'	-115° 08.936'
H-4	48° 35.368'	-115° 09.617'
H-5	48° 37.307'	-115° 07.133'
H-6	48° 35.377'	-115° 05.352'
DP-10	48° 39.002'	-115° 08.086'
DP-15	48° 38.343'	-115° 04.395'
DP-25	48° 37.295'	-115° 07.160'
DP-30	48° 38.632'	-115° 05.544'
DP-35	48° 35.670'	-115° 10.277'
DP-38	48° 35.754'	-115° 07.065'
DP-40	48° 34.899'	-115° 06.796'
DP-43	48° 35.321'	-115° 08.305'
CMD RPTR	48° 38.585'	-115° 05.510'
A/M Lookout	48° 36.564'	-115° 08.263'



- Aerial Hazard
- Airstrip or Airport
- Camp
- Drop Point
- Helispot
- Incident Command Post
- Repeater
- Pump
- Porta-tank
- Pumpkin
- Staging Area
- Log Decks
- Lookout
- Division Break
- Uncontrolled Fire Edge
- Completed Line
- Completed Hand Line
- Completed Dozer Line
- Line Break Completed
- Planned Secondary Line
- TFR
- Utility Lines
- Lookouts
- Mountain Top
- Roads**
- State or US Highway
- Open
- Restricted/gated
- Other Public Roads
- Trails
- Motorized Trails
- Lakes
- Rivers and Streams
- OWNER**
- Corp of Engineers
- FS
- MT State
- Private
- Plum Creek

