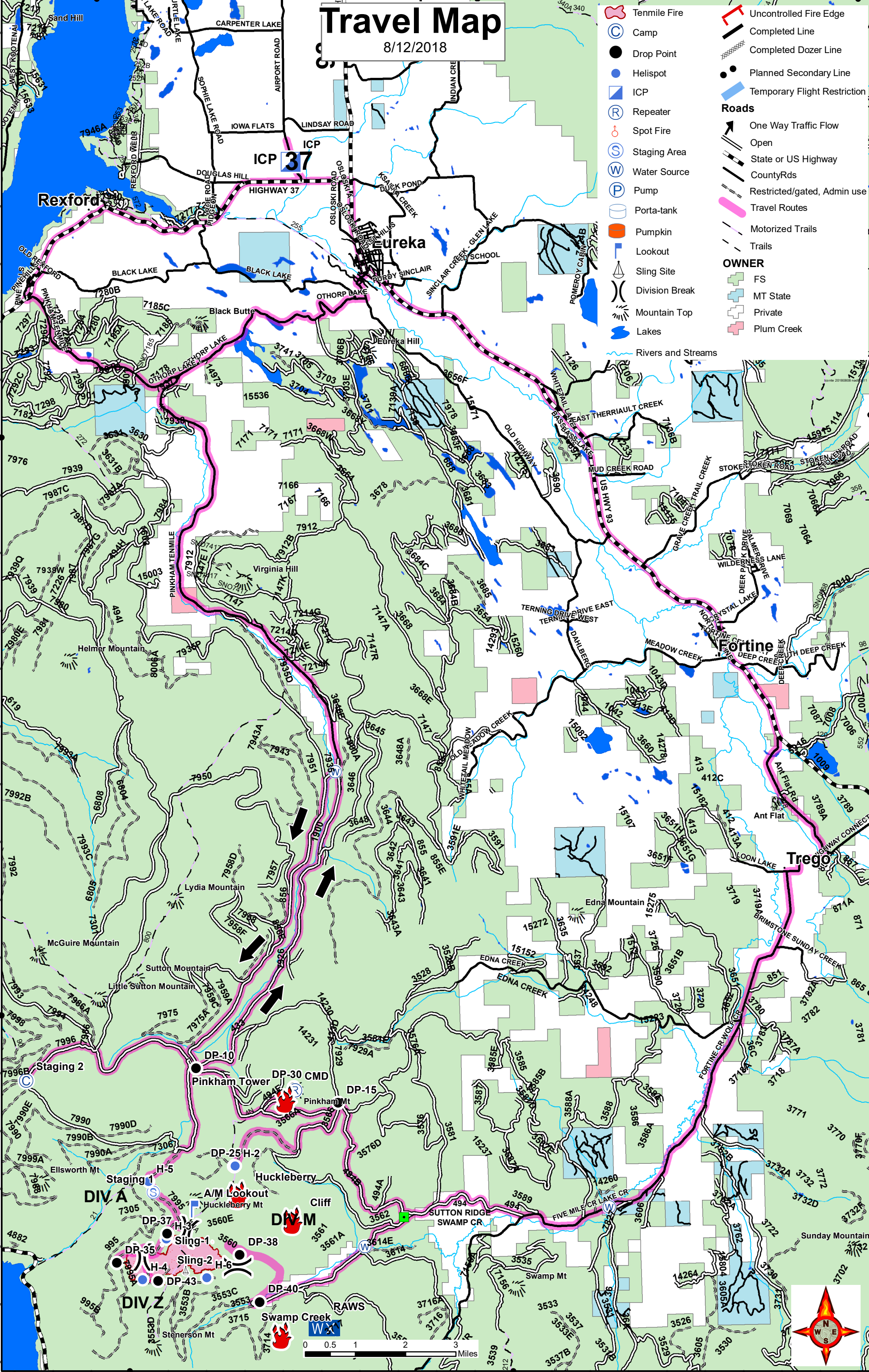


# Travel Map

8/12/2018

- Tenmile Fire
  - Camp
  - Drop Point
  - Helispot
  - ICP
  - Repeater
  - Spot Fire
  - Staging Area
  - Water Source
  - Pump
  - Porta-tank
  - Pumpkin
  - Lookout
  - Division Break
  - Mountain Top
  - Lakes
  - Rivers and Streams
  - Uncontrolled Fire Edge
  - Completed Line
  - Completed Dozer Line
  - Planned Secondary Line
  - Temporary Flight Restriction
- Roads**
- One Way Traffic Flow
  - Open
  - State or US Highway
  - CountyRds
  - Restricted/gated, Admin use
  - Travel Routes
  - Motorized Trails
  - Trails
- OWNER**
- FS
  - MT State
  - Private
  - Plum Creek



48°50'N

48°50'N

48°40'N

48°40'N

