

115°10'W

115°0'W

114°50'W

48°50'N

48°50'N

48°40'N

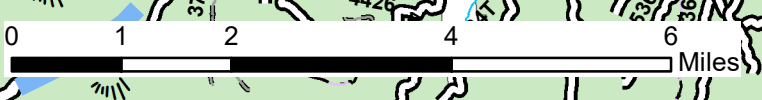
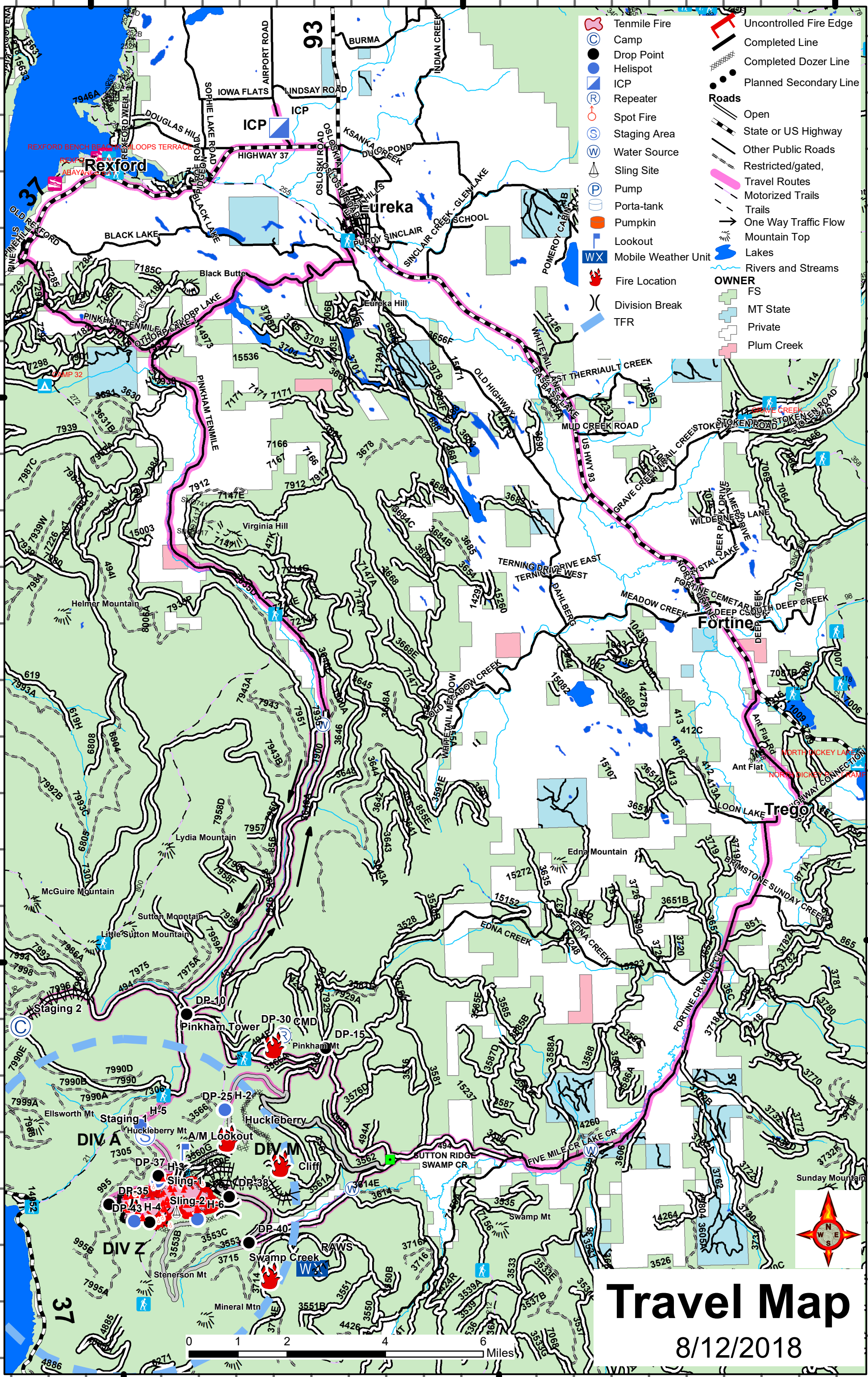
48°40'N

115°10'W

115°0'W

tconte 20180811 nad83z11

- Tenmile Fire
 - Camp
 - Drop Point
 - Helispot
 - ICP
 - Repeater
 - Spot Fire
 - Staging Area
 - Water Source
 - Sling Site
 - Pump
 - Porta-tank
 - Pumpkin
 - Lookout
 - Mobile Weather Unit
 - Fire Location
 - Division Break
 - TFR
 - Uncontrolled Fire Edge
 - Completed Line
 - Completed Dozer Line
 - Planned Secondary Line
- Roads**
- Open
 - State or US Highway
 - Other Public Roads
 - Restricted/gated,
 - Travel Routes
 - Motorized Trails
 - Trails
 - One Way Traffic Flow
 - Mountain Top
 - Lakes
 - Rivers and Streams
- OWNER**
- FS
 - MT State
 - Private
 - Plum Creek



Travel Map
8/12/2018