



# Tenmile Fire

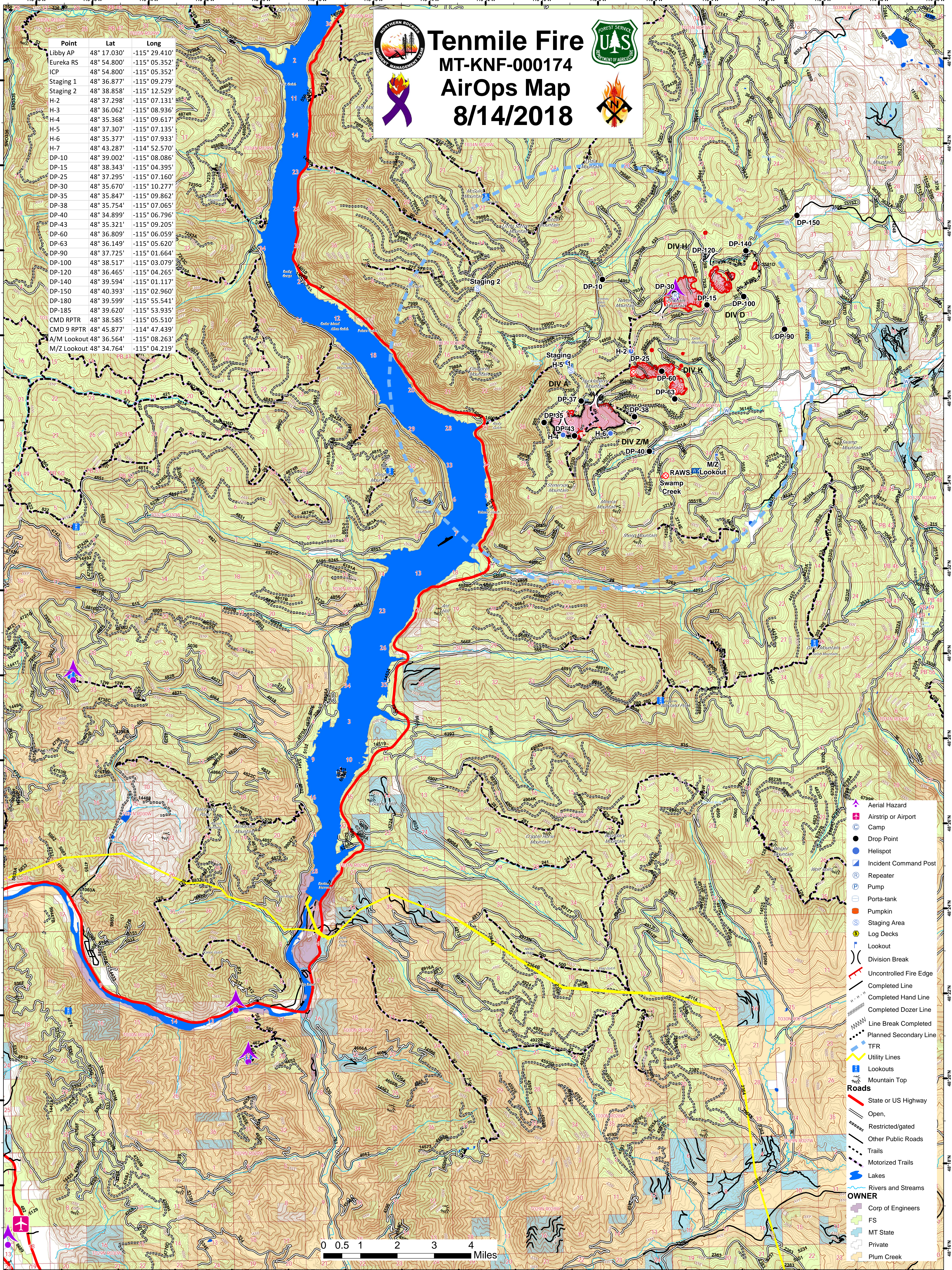
## MT-KNF-000174

### AirOps Map

#### 8/14/2018



Point	Lat	Long
Libby AP	48° 17.030'	-115° 29.410'
Eureka RS	48° 54.800'	-115° 05.352'
ICP	48° 54.800'	-115° 05.352'
Staging 1	48° 36.877'	-115° 09.279'
Staging 2	48° 38.858'	-115° 12.529'
H-2	48° 37.298'	-115° 07.131'
H-3	48° 36.062'	-115° 08.936'
H-4	48° 35.368'	-115° 09.617'
H-5	48° 37.307'	-115° 07.135'
H-6	48° 35.377'	-115° 07.933'
H-7	48° 43.287'	-114° 52.570'
DP-10	48° 39.002'	-115° 08.086'
DP-15	48° 38.343'	-115° 04.395'
DP-25	48° 37.295'	-115° 07.160'
DP-30	48° 35.670'	-115° 10.277'
DP-35	48° 35.847'	-115° 09.862'
DP-38	48° 35.754'	-115° 07.065'
DP-40	48° 34.899'	-115° 06.796'
DP-43	48° 35.321'	-115° 09.205'
DP-60	48° 36.809'	-115° 06.059'
DP-63	48° 36.149'	-115° 05.620'
DP-90	48° 37.725'	-115° 01.664'
DP-100	48° 38.517'	-115° 03.079'
DP-120	48° 36.149'	-115° 04.265'
DP-140	48° 39.594'	-115° 01.117'
DP-150	48° 40.393'	-115° 02.960'
DP-180	48° 39.599'	-115° 05.541'
DP-185	48° 39.620'	-115° 05.935'
CMD RPTR	48° 38.585'	-115° 05.510'
CMD 9 RPTR	48° 45.877'	-114° 47.439'
A/M Lookout	48° 36.564'	-115° 08.263'
M/Z Lookout	48° 34.764'	-115° 04.219'



- Aerial Hazard
- Airstrip or Airport
- Camp
- Drop Point
- Helispot
- Incident Command Post
- Repeater
- Pump
- Porta-tank
- Pumpkin
- Staging Area
- Log Decks
- Lookout
- Division Break
- Uncontrolled Fire Edge
- Completed Line
- Completed Hand Line
- Completed Dozer Line
- Line Break Completed
- Planned Secondary Line
- TFR
- Utility Lines
- Lookouts
- Mountain Top
- Roads**
- State or US Highway
- Open
- Restricted/gated
- Other Public Roads
- Trails
- Motorized Trails
- Lakes
- Rivers and Streams
- OWNER**
- Corp of Engineers
- FS
- MT State
- Private
- Plum Creek

