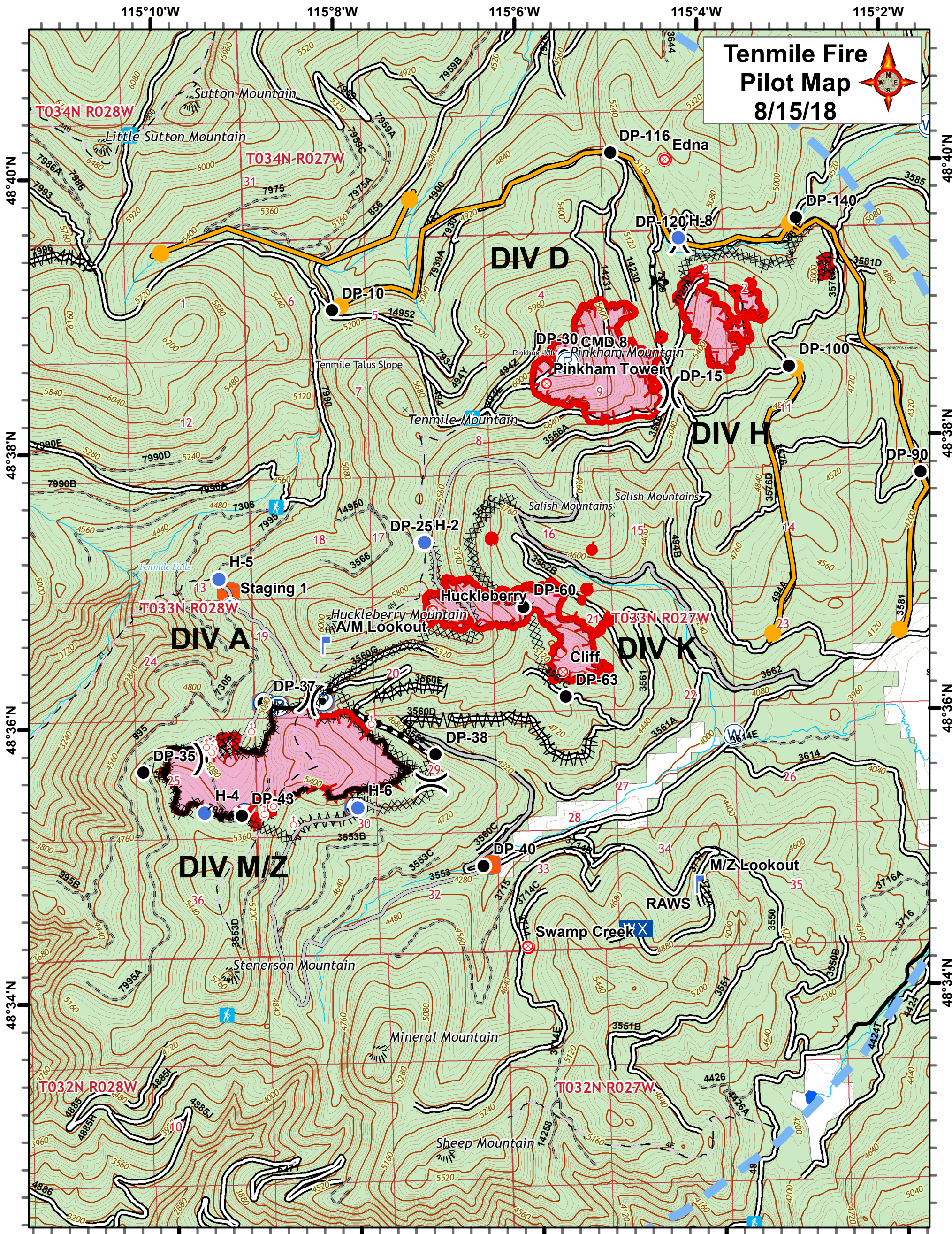


Tenmile Fire Pilot Map

8/15/18



- Fire Perimeters
- Drop Point
- Helispot
- Repeater
- Spot Fire
- Staging Area
- Pump
- Division Break
- Porta-tank
- Pumpkin
- Lookout
- Mobile Weather Unit
- Mountain Top
- Lookouts
- Trailhead
- Lakes
- Rivers and Streams
- Uncontrolled Fire Edge
- Completed Line
- Completed Dozer Line
- Planned Secondary Line
- TFR
- Roads
- Open
- Highway
- Other Public Rds
- Restricted/gated
- Motorized Trails
- Trails
- OWNER FS
- Private

Point	Lat	Long	Point	Lat	Long	Point	Lat	Long
Libby AP	48° 17.030'	-115° 29.410'	DP-10	48° 39.002'	-115° 08.086'	DP-90	48° 37.725'	-115° 01.664'
Eureka RS	48° 54.800'	-115° 05.352'	DP-15	48° 38.343'	-115° 04.395'	DP-100	48° 38.517'	-115° 03.079'
ICP	48° 54.800'	-115° 05.352'	DP-25	48° 37.295'	-115° 07.160'	DP-116	48° 40.101'	-115° 04.982'
Staging 1	48° 36.877'	-115° 09.279'	DP-30	48° 35.670'	-115° 10.277'	DP-120	48° 36.465'	-115° 04.265'
Staging 2	48° 38.858'	-115° 12.529'	DP-35	48° 35.847'	-115° 09.862'	DP-140	48° 39.594'	-115° 01.117'
H-2	48° 37.298'	-115° 07.131'	DP-38	48° 35.754'	-115° 07.065'	DP-150	48° 40.393'	-115° 02.960'
H-4	48° 35.368'	-115° 09.617'	DP-40	48° 34.899'	-115° 06.796'	DP-180	48° 39.599'	-115° 55.541'
H-5	48° 37.307'	-115° 07.135'	DP-43	48° 35.321'	-115° 09.205'	DP-185	48° 39.620'	-115° 53.935'
H-6	48° 35.377'	-115° 07.933'	DP-60	48° 36.809'	-115° 06.059'	A/M Lookout	48° 36.564'	-115° 08.263'
H-7	48° 43.287'	-114° 52.570'	DP-63	48° 36.149'	-115° 05.620'	M/Z Lookout	48° 34.764'	-115° 04.219'
H-8	48° 36.465'	-115° 04.265'						

