


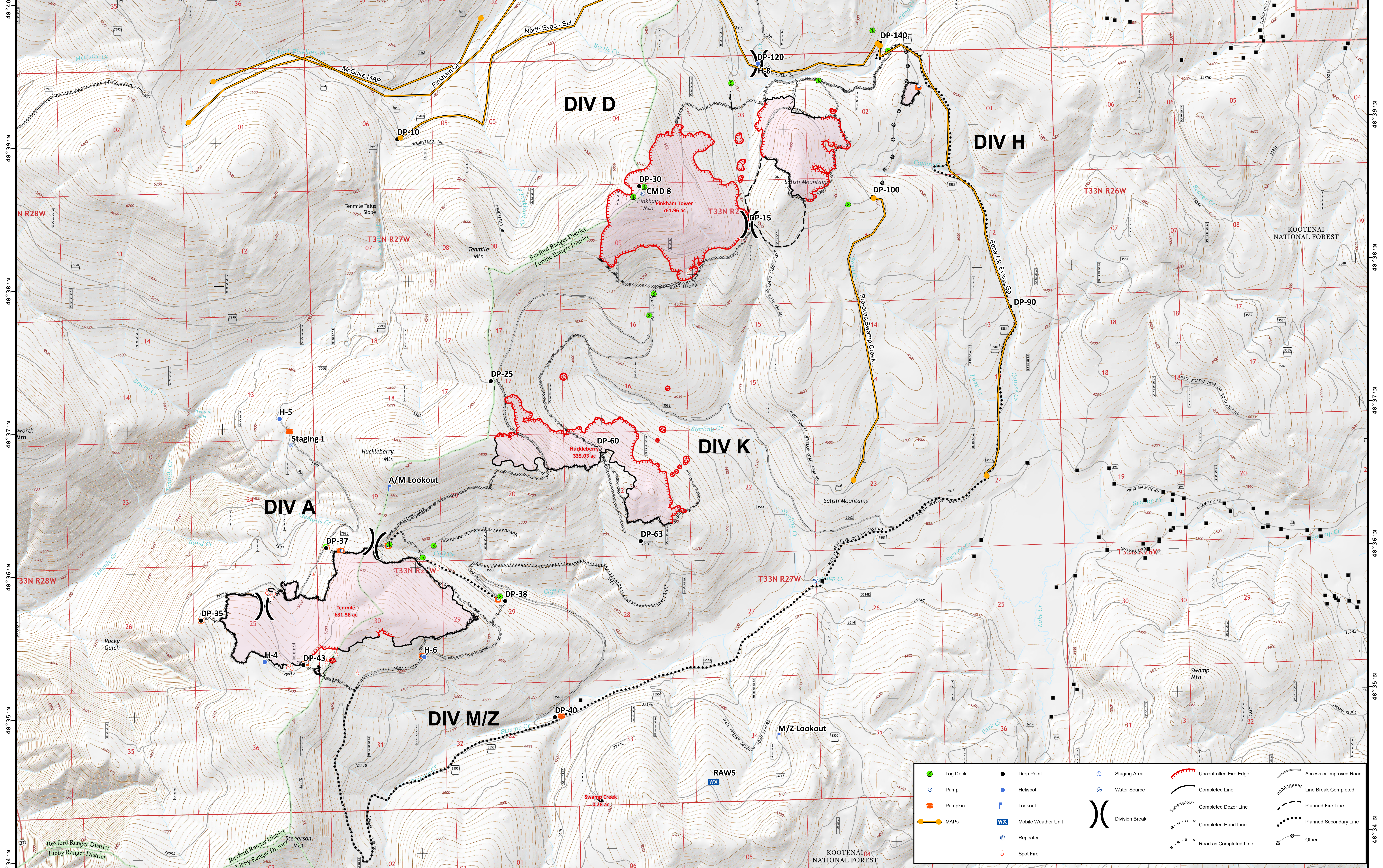
115°12'W 115°11'W 115°10'W 115°9'W 115°8'W 115°7'W 115°6'W 115°5'W 115°4'W 115°3'W 115°2'W 115°1'W 115°0'W 114°59'W 114°58'W

BRIEFING OPS

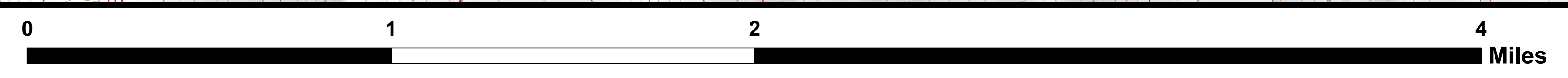
Sterling Complex
 MT-KNF-000205
 1,098 acres
Tenmile
 MT-KNF-000174
 681 acres
 August 18, 2018



Team 5



Coordinate System: NAD 1983 UTM Zone 11N
 Map Scale: 1:15,000, 1 inch = 1,250 feet



	Log Deck		Drop Point		Staging Area		Uncontrolled Fire Edge		Access or Improved Road
	Pump		Helispot		Water Source		Completed Line		Line Break Completed
	Pumpkin		Lookout		Division Break		Completed Dozer Line		Planned Fire Line
	MAPs		Mobile Weather Unit		Repeater		Completed Hand Line		Planned Secondary Line
			Spot Fire		Other		Road as Completed Line		

GB Team 5 GIS
 8/17/2018, 20:52 hrs
 BRIEFING OPS