

# Sterling Complex

MTKNF-205  
1098 acres

# Tenmile

MTKNF-174  
681 acres

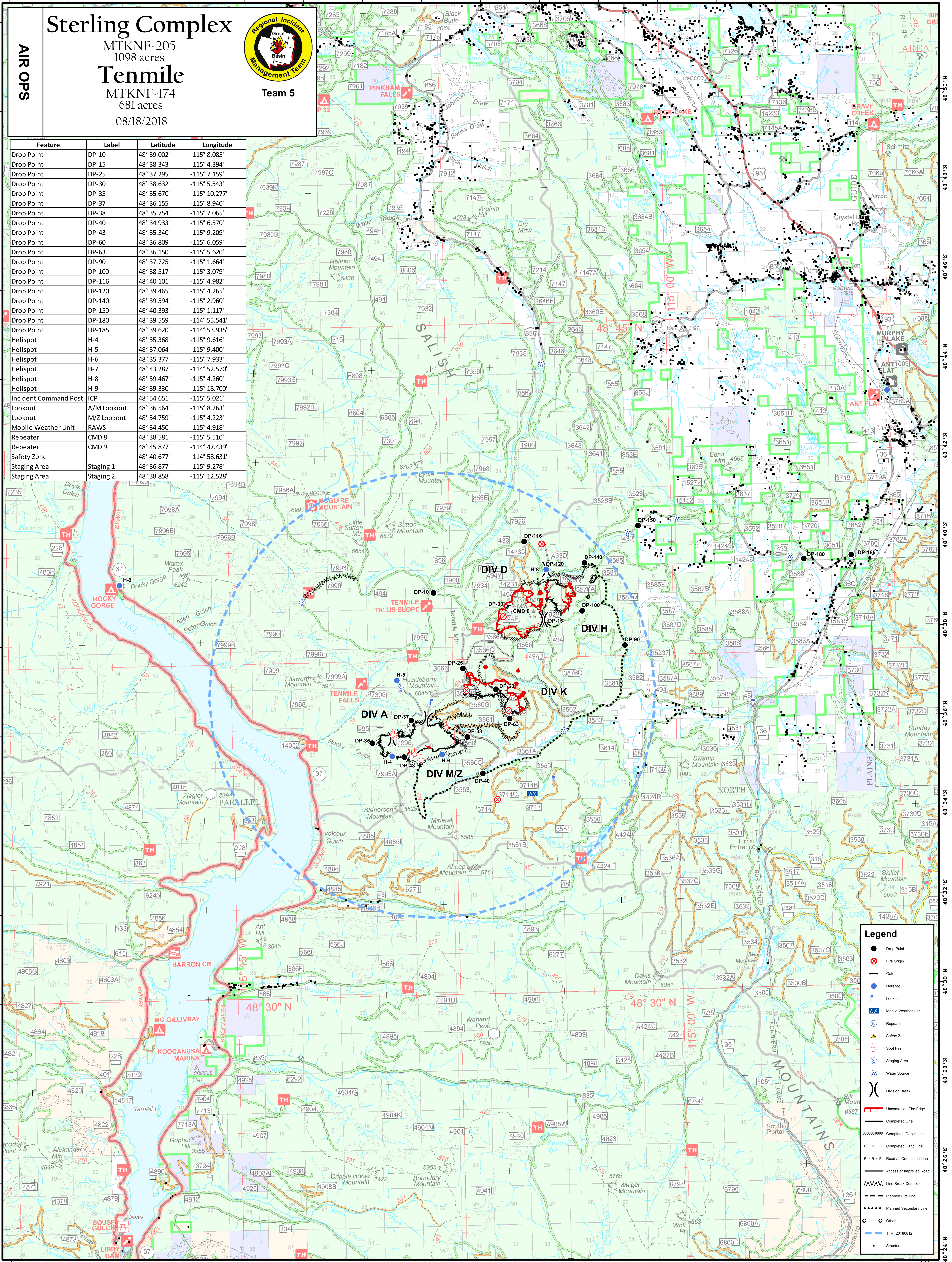
08/18/2018

**AIR OPS**



**Team 5**

Feature	Label	Latitude	Longitude
Drop Point	DP-10	48° 39.002'	-115° 8.085'
Drop Point	DP-15	48° 38.343'	-115° 4.394'
Drop Point	DP-25	48° 37.295'	-115° 7.159'
Drop Point	DP-30	48° 38.632'	-115° 5.543'
Drop Point	DP-35	48° 35.670'	-115° 10.277'
Drop Point	DP-37	48° 36.155'	-115° 8.940'
Drop Point	DP-38	48° 35.754'	-115° 7.065'
Drop Point	DP-40	48° 34.933'	-115° 6.570'
Drop Point	DP-43	48° 35.340'	-115° 9.209'
Drop Point	DP-60	48° 36.809'	-115° 6.059'
Drop Point	DP-63	48° 36.150'	-115° 5.620'
Drop Point	DP-90	48° 37.725'	-115° 1.664'
Drop Point	DP-100	48° 38.517'	-115° 3.079'
Drop Point	DP-116	48° 40.101'	-115° 4.982'
Drop Point	DP-120	48° 39.465'	-115° 4.265'
Drop Point	DP-140	48° 39.594'	-115° 2.960'
Drop Point	DP-150	48° 40.393'	-115° 1.117'
Drop Point	DP-180	48° 39.559'	-114° 55.541'
Drop Point	DP-185	48° 39.620'	-114° 53.935'
Helispot	H-4	48° 35.368'	-115° 5.270'
Helispot	H-5	48° 37.064'	-115° 9.400'
Helispot	H-6	48° 35.377'	-115° 7.933'
Helispot	H-7	48° 43.287'	-114° 52.570'
Helispot	H-8	48° 39.467'	-115° 4.260'
Helispot	H-9	48° 39.330'	-115° 18.700'
Incident Command Post	ICP	48° 54.651'	-115° 5.021'
Lookout	A/M Lookout	48° 36.564'	-115° 8.263'
Lookout	M/Z Lookout	48° 34.759'	-115° 4.223'
Mobile Weather Unit	RAWS	48° 34.450'	-115° 4.918'
Repeater	CMD 8	48° 38.581'	-115° 5.510'
Repeater	CMD 9	48° 45.877'	-114° 47.439'
Safety Zone		48° 40.677'	-114° 58.631'
Staging Area	Staging 1	48° 36.877'	-115° 9.278'
Staging Area	Staging 2	48° 38.858'	-115° 12.528'



**Legend**

- Drop Point
- ⊗ Fire Origin
- Gate
- Helispot
- Lookout
- WX Mobile Weather Unit
- Ⓜ Repeater
- ⚠ Safety Zone
- Spot Fire
- Staging Area
- Water Source
- ⎓ Division Break
- Uncontrolled Fire Edge
- Completed Line
- ⋯ Completed Dotted Line
- H - H - H Completed Hand Line
- R - R - R Road as Completed Line
- Access or Improved Road
- ⋯ M M M M M Line Break Completed
- Planned Fire Line
- ⋯ Planned Secondary Line
- Other
- Structures