


115°12'W 115°11'W 115°10'W 115°9'W 115°8'W 115°7'W 115°6'W 115°5'W 115°4'W 115°3'W 115°2'W 115°1'W 115°0'W 114°59'W 114°58'W

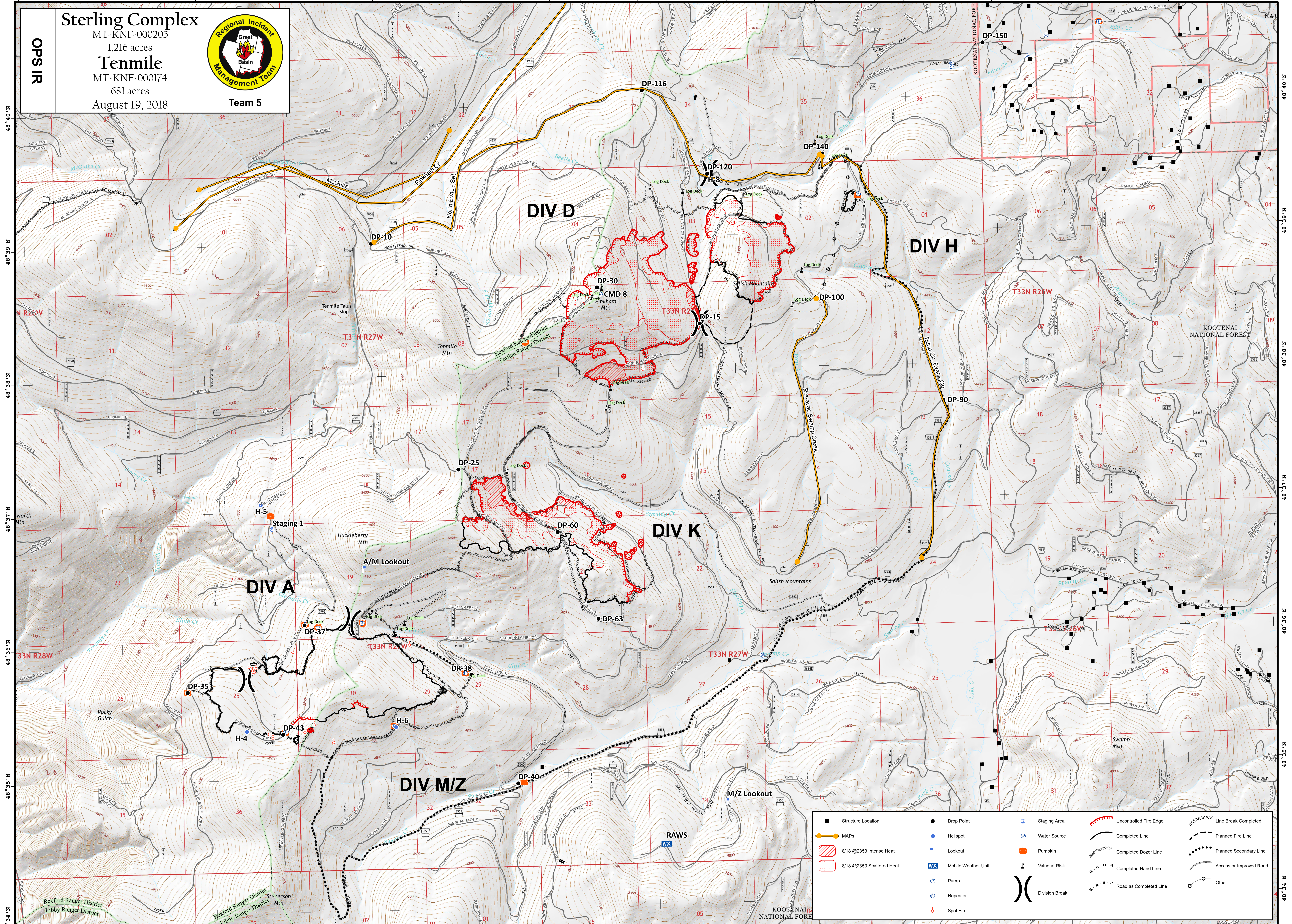
48°40'N 48°39'N 48°38'N 48°37'N 48°36'N 48°35'N 48°34'N

OPS IR

Sterling Complex
 MT-KNF-000205
 1,216 acres
Tenmile
 MT-KNF-000174
 681 acres
 August 19, 2018



Team 5



Structure Location	Drop Point	Staging Area	Uncontrolled Fire Edge	Line Break Completed
MAPs	Helispot	Water Source	Completed Line	Planned Fire Line
8/18 @2353 Intense Heat	Lookout	Pumpkin	Completed Dozer Line	Planned Secondary Line
8/18 @2353 Scattered Heat	Mobile Weather Unit	Value at Risk	Completed Hand Line	Access or Improved Road
	Pump	Division Break	Road as Completed Line	Other
	Repeater			
	Spot Fire			

Coordinate System: NAD 1983 UTM Zone 11N
 Map Scale: 1:15,000, 1 inch = 1,250 feet

0 1 2 4 Miles

GB Team 5 GIS
 8/19/2018, 11:43 AM
 OPS IR