
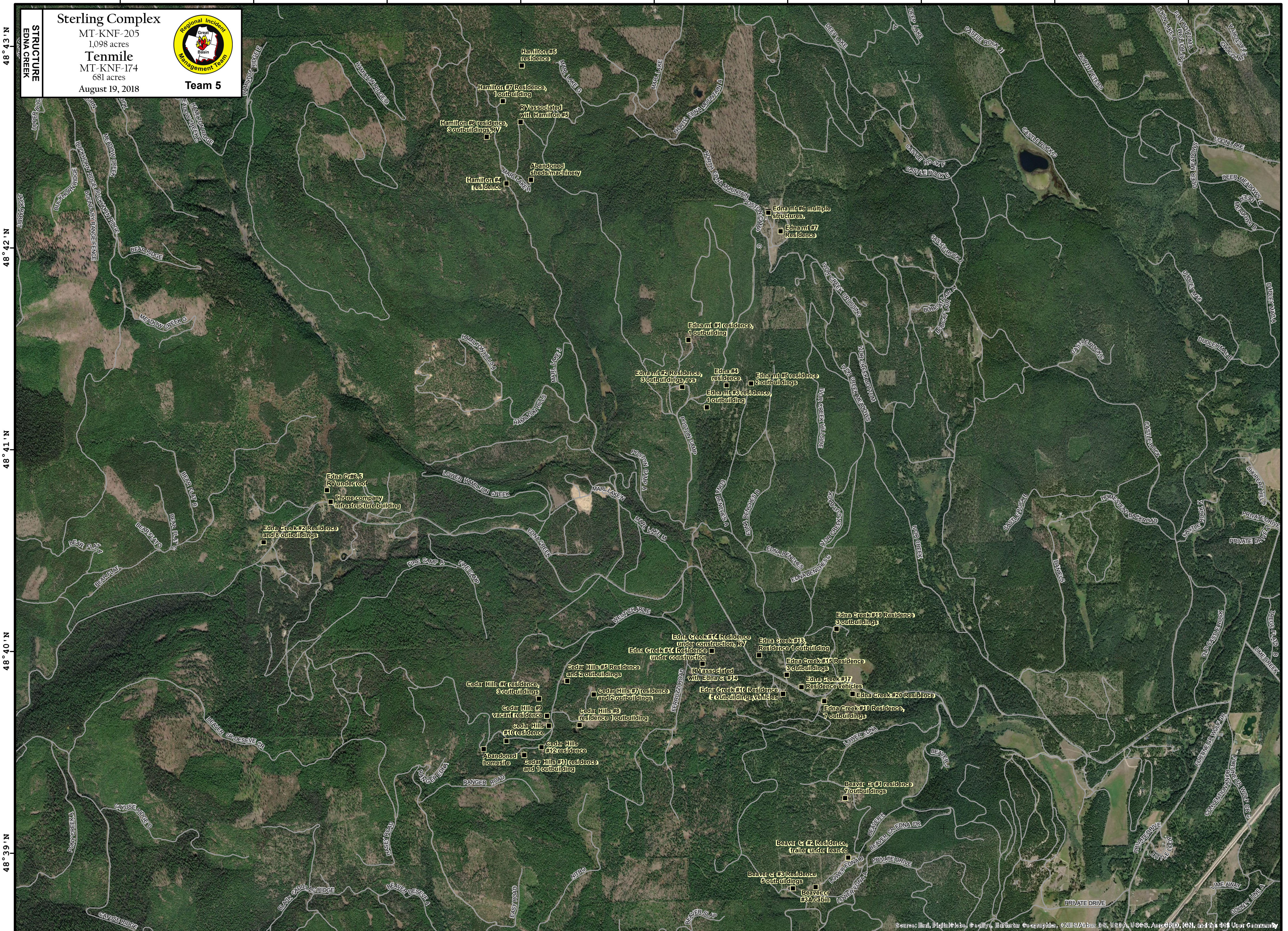


**STRUCTURE**  
EDNA CREEK

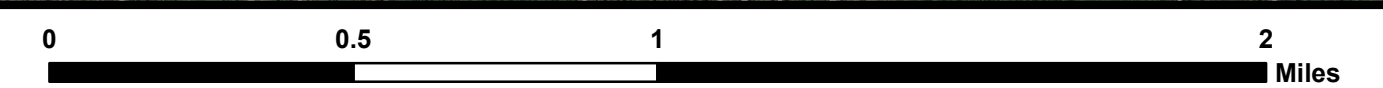
**Sterling Complex**  
MT-KNF-205  
1,098 acres  
**Tennile**  
MT-KNF-174  
681 acres  
August 19, 2018



**Team 5**



**Coordinate System:** NAD 1983 UTM Zone 11N  
**Map Scale:** 1:20,000, 1 inch = 1,667 feet



Source: Esri, DigitalGlobe, GeoEye, Earthstar, CNES/Airbus DS, USDA, USGS, AeroGRID, IGN, and the GIS User Community