

115°4'W 115°3'30"W 115°3'W 115°2'30"W 115°2'W 115°1'30"W 115°1'W 115°0'30"W 115°0'W 114°59'30"W

STRUCTURE
SWAMP CREEK

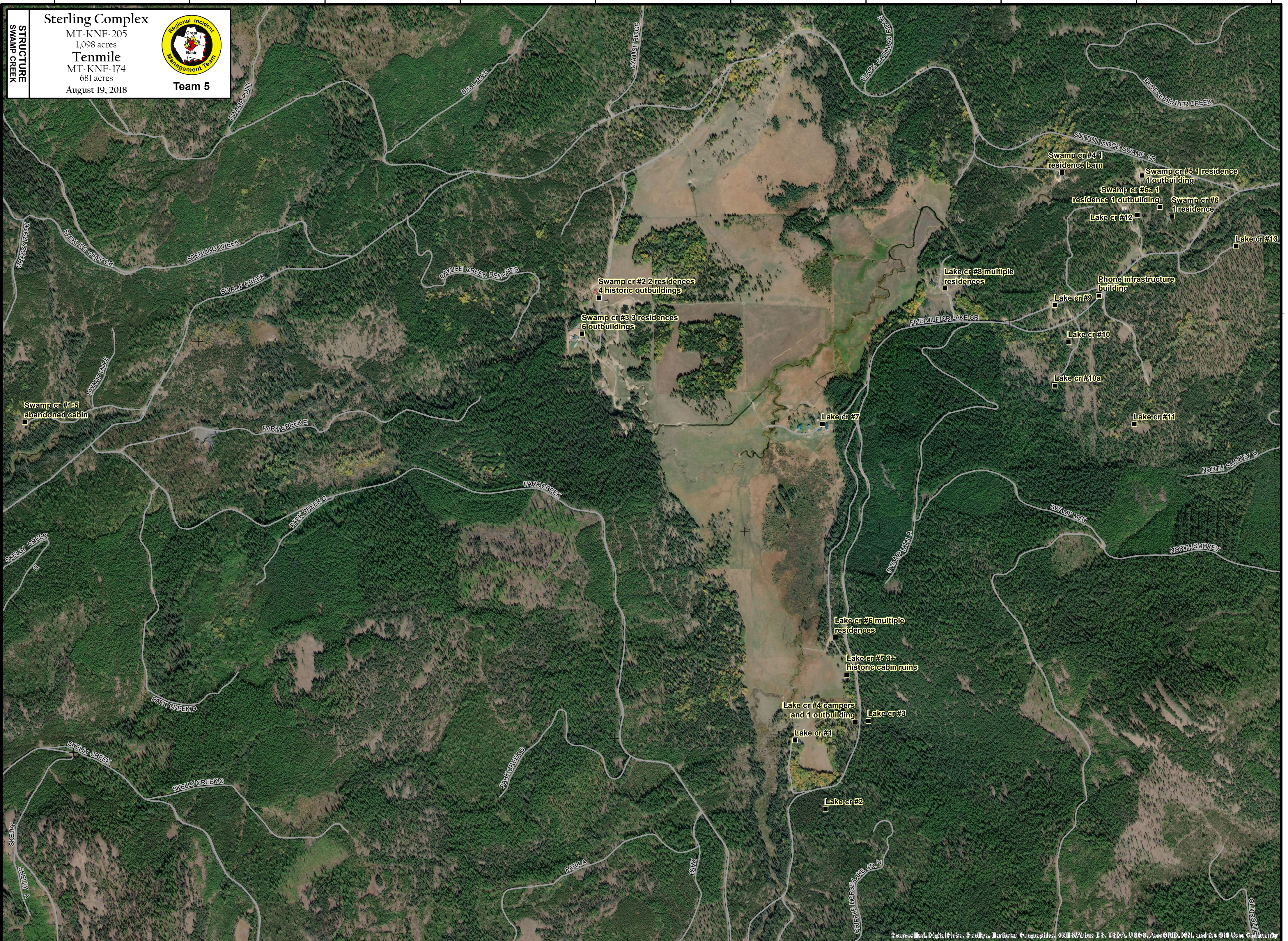
Sterling Complex

MT-KNF-205
1,098 acres
Tennile
MT-KNF-174
681 acres
August 19, 2018



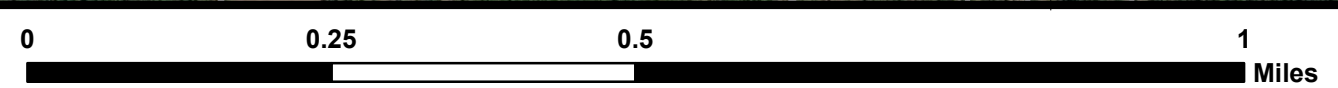
Team 5

48°36'30"N
48°36'N
48°35'30"N
48°35'N



Source: Esri, DigitalGlobe, GeoEye, Earthstar Geographics, CNES/Airbus DS, USDA, USGS, AeroGRID, IGN, and the GIS User Community

Coordinate System: NAD 1983 UTM Zone 11N
Map Scale: 1:10,000, 1 inch = 833 feet



STRUCTURE