


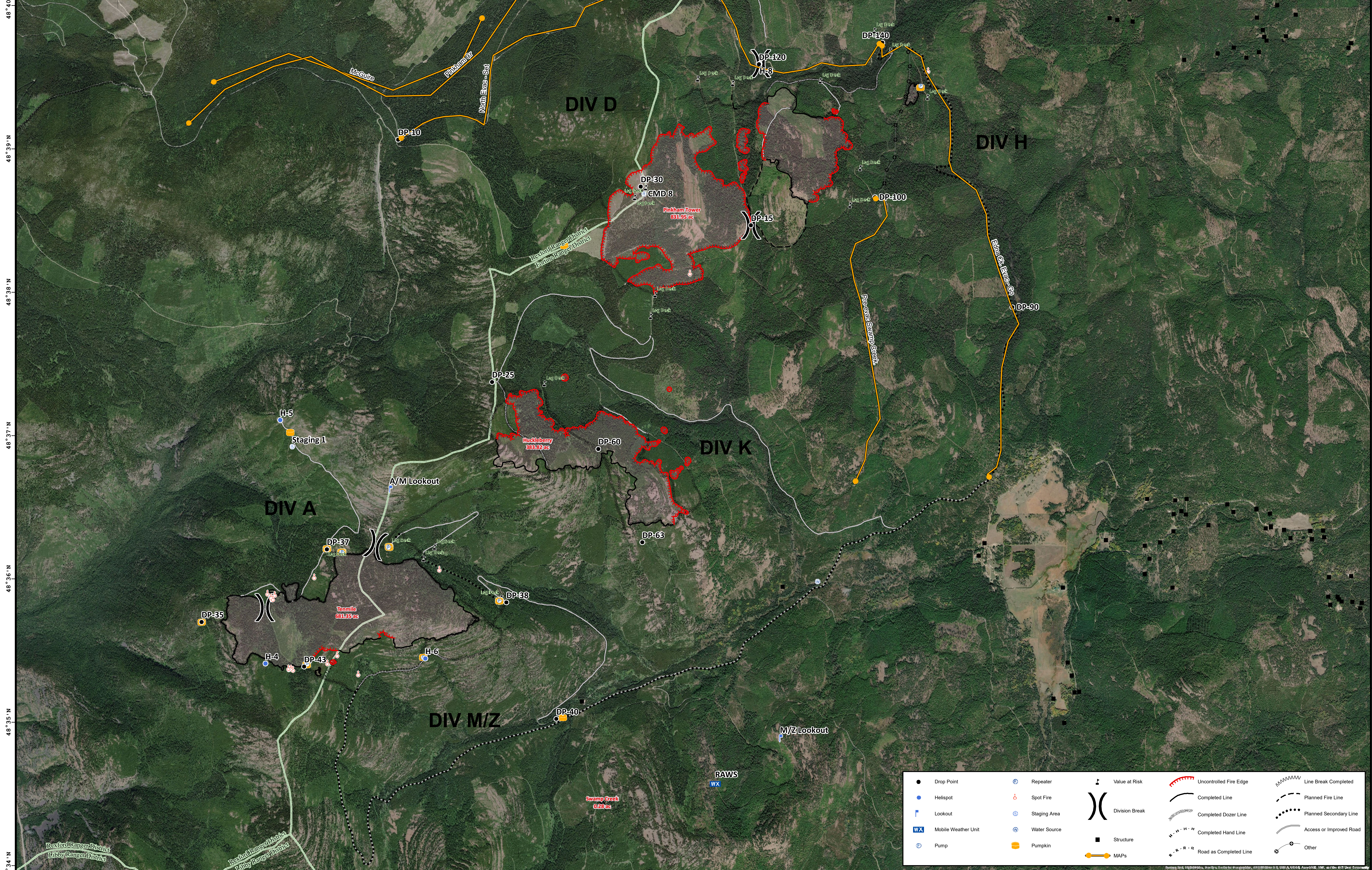
115°12'W 115°11'W 115°10'W 115°9'W 115°8'W 115°7'W 115°6'W 115°5'W 115°4'W 115°3'W 115°2'W 115°1'W 115°0'W 114°59'W 114°58'W

**BRIEFING OPS**

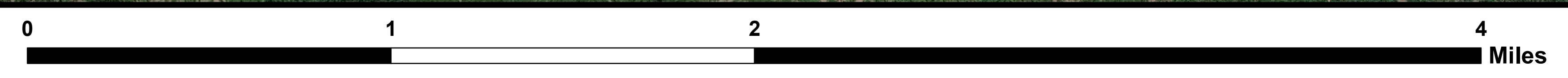
**Sterling Complex**  
 MT-KNF-000205  
 1,216 acres  
**Tenmile**  
 MT-KNF-000174  
 681 acres  
 August 20, 2018



**Team 5**



Coordinate System: NAD 1983 UTM Zone 11N  
 Map Scale: 1:15,000, 1 inch = 1,250 feet



● Drop Point	⊕ Repeater	⚠ Value at Risk	🔴 Uncontrolled Fire Edge	⚡ Line Break Completed
● Hellsport	⊙ Spot Fire	⎓ Division Break	— Completed Line	⋯ Planned Fire Line
⚡ Lookout	⊙ Staging Area	⎓ Structure	— Completed Dozer Line	⋯ Planned Secondary Line
⚡ Mobile Weather Unit	⊙ Water Source	⎓ MAPs	— Completed Hand Line	— Access or Improved Road
⊙ Pump	🍂 Pumpkin		— Road as Completed Line	⊙ Other

48°40'N  
48°39'N  
48°38'N  
48°37'N  
48°36'N  
48°35'N  
48°34'N