


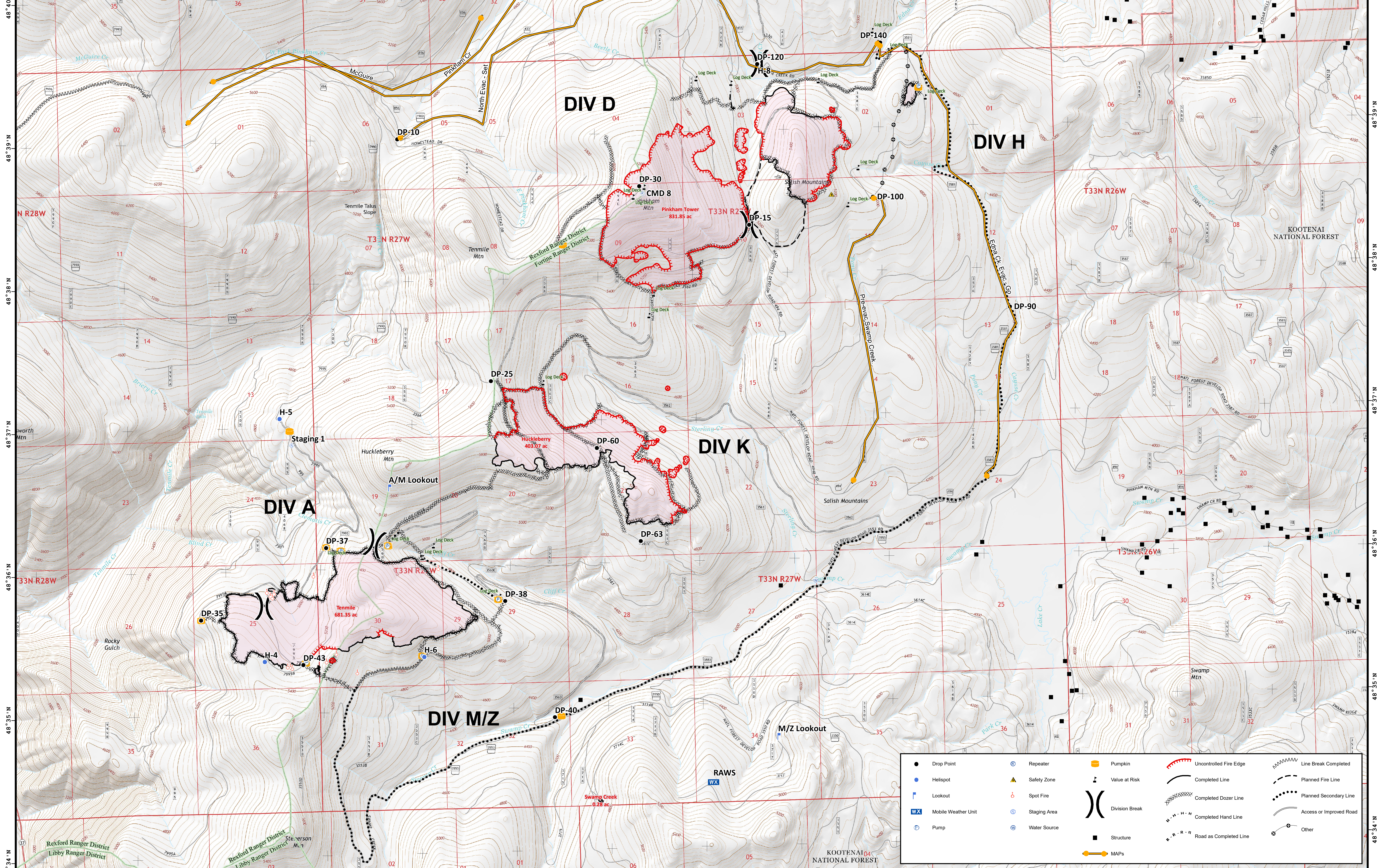
115°12'W 115°11'W 115°10'W 115°9'W 115°8'W 115°7'W 115°6'W 115°5'W 115°4'W 115°3'W 115°2'W 115°1'W 115°0'W 114°59'W 114°58'W

**BRIEFING OPS**

**Sterling Complex**  
 MT-KNF-000205  
 1,235 acres  
**Tenmile**  
 MT-KNF-000174  
 681 acres  
 August 21, 2018



**Team 5**



● Drop Point	⊕ Repeater	🍂 Pumpkin	🔴 Uncontrolled Fire Edge	⋯ Line Break Completed
● Helispot	⚠ Safety Zone	⚠ Value at Risk	— Completed Line	⋯ Planned Fire Line
🏠 Lookout	🔥 Spot Fire	⚠ Division Break	⚡ Completed Dozer Line	⋯ Planned Secondary Line
📡 Mobile Weather Unit	📍 Staging Area	⚠	⚡ Completed Hand Line	— Access or Improved Road
🚰 Pump	🌊 Water Source	⚠	— Road as Completed Line	⚠ Other
		🏠 Structure		
		🗺️ MAPs		

Coordinate System: NAD 1983 UTM Zone 11N  
 Map Scale: 1:15,000, 1 inch = 1,250 feet

