

115°16'W 115°15'W 115°14'W 115°13'W 115°12'W 115°11'W 115°10'W 115°9'W 115°8'W 115°7'W 115°6'W 115°5'W 115°4'W 115°3'W 115°2'W 115°1'W 115°0'W 114°59'W 114°58'W 114°57'W 114°56'W 114°55'W 114°54'W

48°44'N 48°43'N 48°42'N 48°41'N 48°40'N 48°39'N 48°38'N 48°37'N 48°36'N 48°35'N 48°34'N

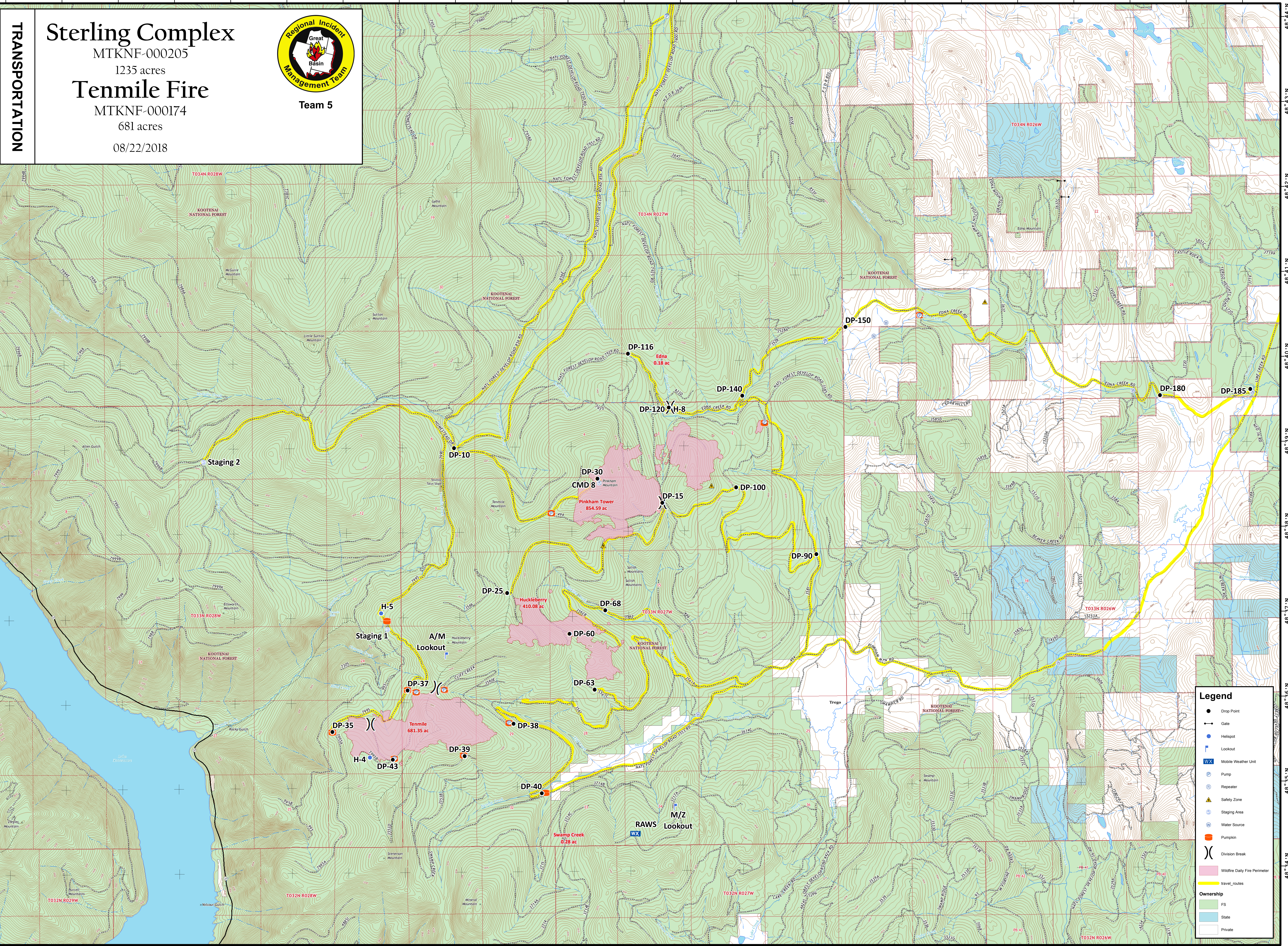
TRANSPORTATION

Sterling Complex

MTKNF-000205
1235 acres

Tenmile Fire

MTKNF-000174
681 acres
08/22/2018



Legend

- Drop Point
- ↔ Gate
- Helispot
- Ⓜ Lookout
- WX Mobile Weather Unit
- Ⓟ Pump
- Ⓡ Repeater
- ⚠ Safety Zone
- Ⓢ Staging Area
- Ⓜ Water Source
- 🍁 Pumpkin
- ⌘ Division Break
- 🟡 Wildfire Daily Fire Perimeter
- 🟡 travel_routes

Ownership

- FS (Forest Service)
- State
- Private

Coordinate System: NAD 1983 UTM Zone 11N
Map Scale: 1:24,000, 1 inch = 2,000 feet

