


115°12'W 115°11'W 115°10'W 115°9'W 115°8'W 115°7'W 115°6'W 115°5'W 115°4'W 115°3'W 115°2'W 115°1'W 115°0'W 114°59'W 114°58'W

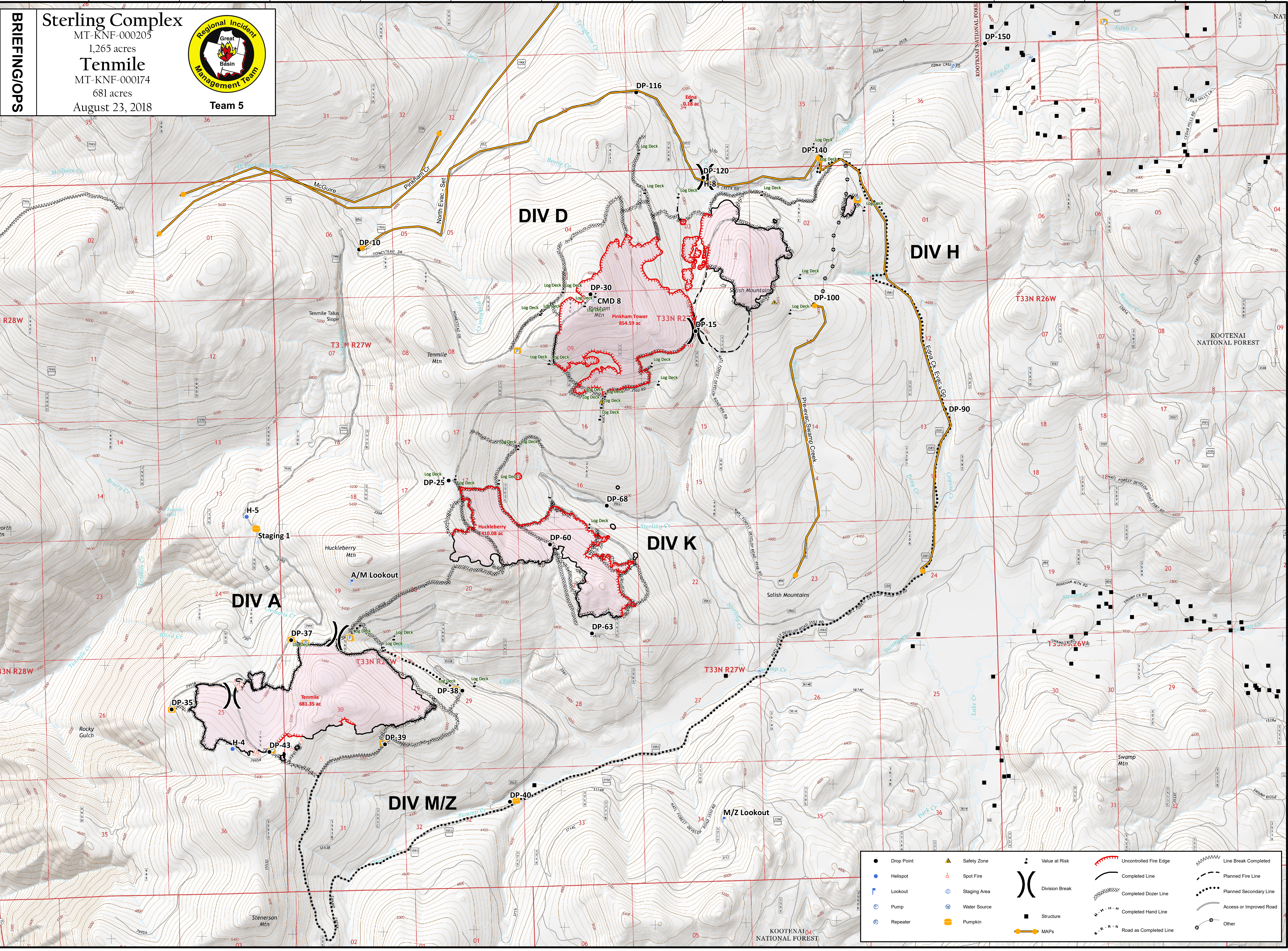
48°40'N 48°39'N 48°38'N 48°37'N 48°36'N 48°35'N 48°34'N

**BRIEFING OPS**

**Sterling Complex**  
 MT-KNF-000205  
 1,265 acres  
**Tenmile**  
 MT-KNF-000174  
 681 acres  
 August 23, 2018



**Team 5**



● Drop Point	▲ Safety Zone	⬇ Value at Risk	⚡ Uncontrolled Fire Edge	⚡ Line Break Completed
● Helispot	⊙ Spot Fire	⎓ Division Break	— Completed Line	⚡ Planned Fire Line
Ⓛ Lookout	⊙ Staging Area	⎓ Completed Dozer Line	⚡ Completed Hand Line	⚡ Planned Secondary Line
Ⓛ Pump	⊙ Water Source	⎓ Completed Hand Line	⚡ Road as Completed Line	⚡ Access or Improved Road
Ⓛ Repeater	⊙ Pumpkin	⎓ Structure	⚡ Other	
		⚡ MAPs		

Coordinate System: NAD 1983 UTM Zone 11N  
 Map Scale: 1:15,000, 1 inch = 1,250 feet

