

115°10'W 115°9'W 115°8'W 115°7'W 115°6'W 115°5'W 115°4'W 115°3'W 115°2'W

**OPERATIONS - IR**

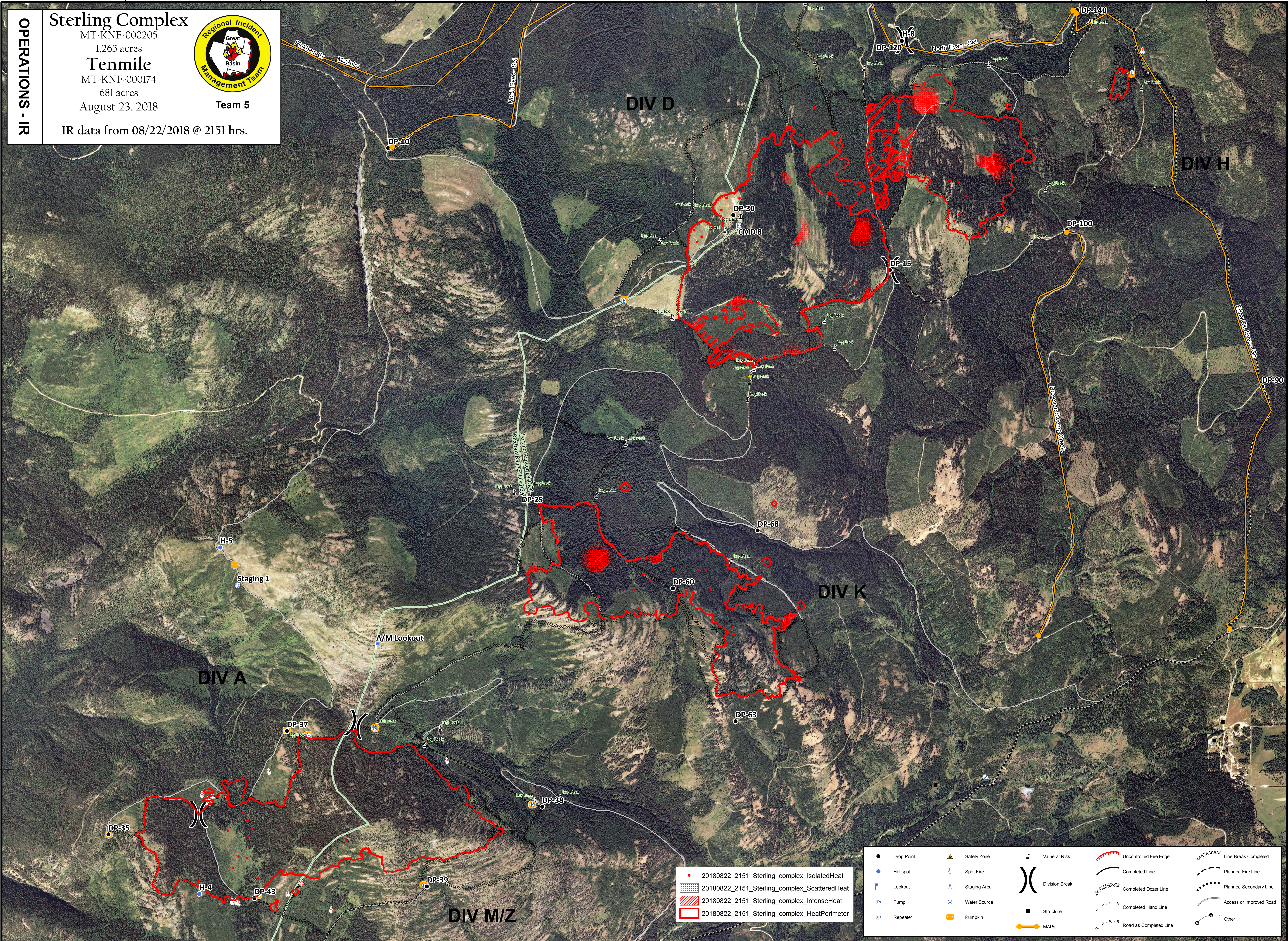
**Sterling Complex**  
 MT-KNF-000205  
 1,265 acres  
**Tenmile**  
 MT-KNF-000174  
 681 acres  
 August 23, 2018

**Regional Incident Management Team**  
**Team 5**

IR data from 08/22/2018 @ 2151 hrs.

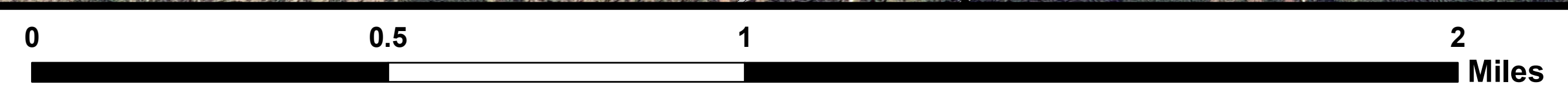


48°39'N  
48°38'N  
48°37'N  
48°36'N  
48°35'N



- 20180822\_2151\_Sterling\_complex\_IsolatedHeat
- 20180822\_2151\_Sterling\_complex\_ScatteredHeat
- 20180822\_2151\_Sterling\_complex\_IntenseHeat
- 20180822\_2151\_Sterling\_complex\_HeatPerimeter

- Drop Point
- Helispot
- Lookout
- Pump
- Repeater
- Safety Zone
- Spot Fire
- Staging Area
- Water Source
- Pumpkin
- Value at Risk
- Division Break
- Structure
- MAPs
- Uncontrolled Fire Edge
- Completed Line
- Completed Dozer Line
- Completed Hand Line
- Road as Completed Line
- Line Break Completed
- Planned Fire Line
- Planned Secondary Line
- Access or Improved Road
- Other



Coordinate System: NAD 1983 UTM Zone 11N  
Map Scale: 1:10,000, 1 inch = 633 feet

GB Team 5 GIS  
8/23/2018, 08:00 hrs  
OPERATIONS - IR