


115°10'W 115°9'W 115°8'W 115°7'W 115°6'W 115°5'W 115°4'W 115°3'W 115°2'W

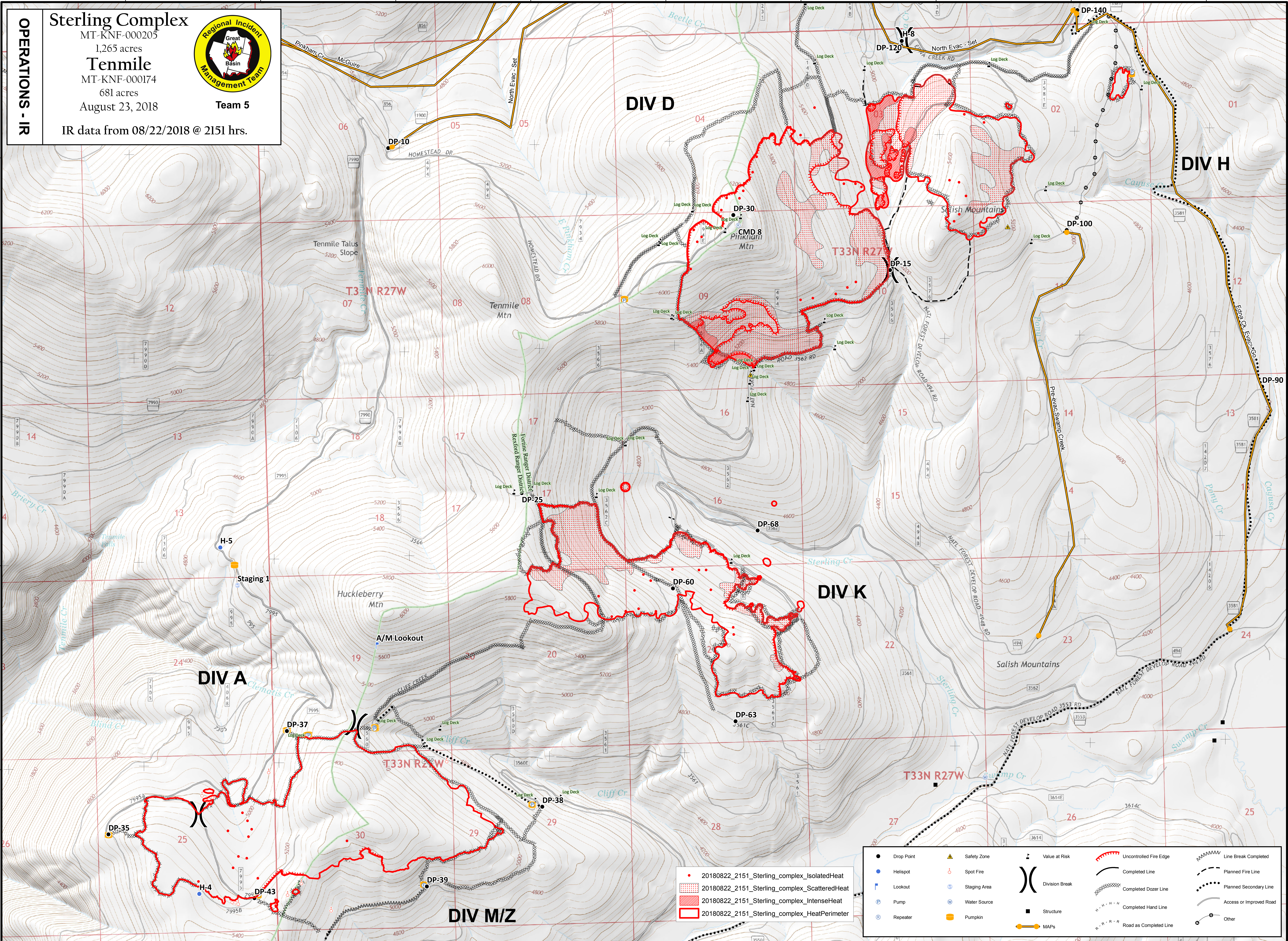
48°39'N 48°38'N 48°37'N 48°36'N 48°35'N

**OPERATIONS - IR**

**Sterling Complex**  
 MT-KNF-000205  
 1,265 acres  
**Tenmile**  
 MT-KNF-000174  
 681 acres  
 August 23, 2018



**Team 5**  
 IR data from 08/22/2018 @ 2151 hrs.



- 20180822\_2151\_Sterling\_complex\_IsolatedHeat
- 20180822\_2151\_Sterling\_complex\_ScatteredHeat
- 20180822\_2151\_Sterling\_complex\_IntenseHeat
- 20180822\_2151\_Sterling\_complex\_HeatPerimeter

<span style="color: blue;">•</span> Drop Point	<span style="color: blue;">▲</span> Safety Zone	<span style="color: blue;">■</span> Value at Risk	<span style="color: red;">- - - - -</span> Uncontrolled Fire Edge	<span style="border-bottom: 1px dashed black; width: 20px;"></span> Line Break Completed
<span style="color: blue;">●</span> Helispot	<span style="color: blue;">○</span> Spot Fire	<span style="border: 1px solid black; border-radius: 50%; width: 15px; height: 15px; display: inline-block;"></span> Division Break	<span style="color: red;">—</span> Completed Line	<span style="border-bottom: 1px dotted black; width: 20px;"></span> Planned Fire Line
<span style="color: blue;">L</span> Lookout	<span style="color: blue;">⊙</span> Staging Area	<span style="border: 1px solid black; width: 15px; height: 15px; display: inline-block;"></span> Structure	<span style="color: red;">- - - - -</span> Completed Dozer Line	<span style="border-bottom: 1px dashed black; width: 20px;"></span> Planned Secondary Line
<span style="color: blue;">P</span> Pump	<span style="color: blue;">⊙</span> Water Source	<span style="color: blue;">■</span> MAPs	<span style="color: red;">- - - - -</span> Completed Hand Line	<span style="border-bottom: 1px dotted black; width: 20px;"></span> Access or Improved Road
<span style="color: blue;">R</span> Repeater	<span style="color: blue;">P</span> Pumpkin		<span style="color: red;">- - - - -</span> Road as Completed Line	<span style="border-bottom: 1px dotted black; width: 20px;"></span> Other

Coordinate System: NAD 1983 UTM Zone 11N  
 Map Scale: 1:10,000, 1 inch = 833 feet

0 0.5 1 2 Miles

GB Team 5 GIS  
 8/23/2018, 04:52 hrs  
 OPERATIONS - IR