


115°11'W 115°10'W 115°9'W 115°8'W 115°7'W 115°6'W 115°5'W 115°4'W 115°3'W 115°2'W 115°1'W

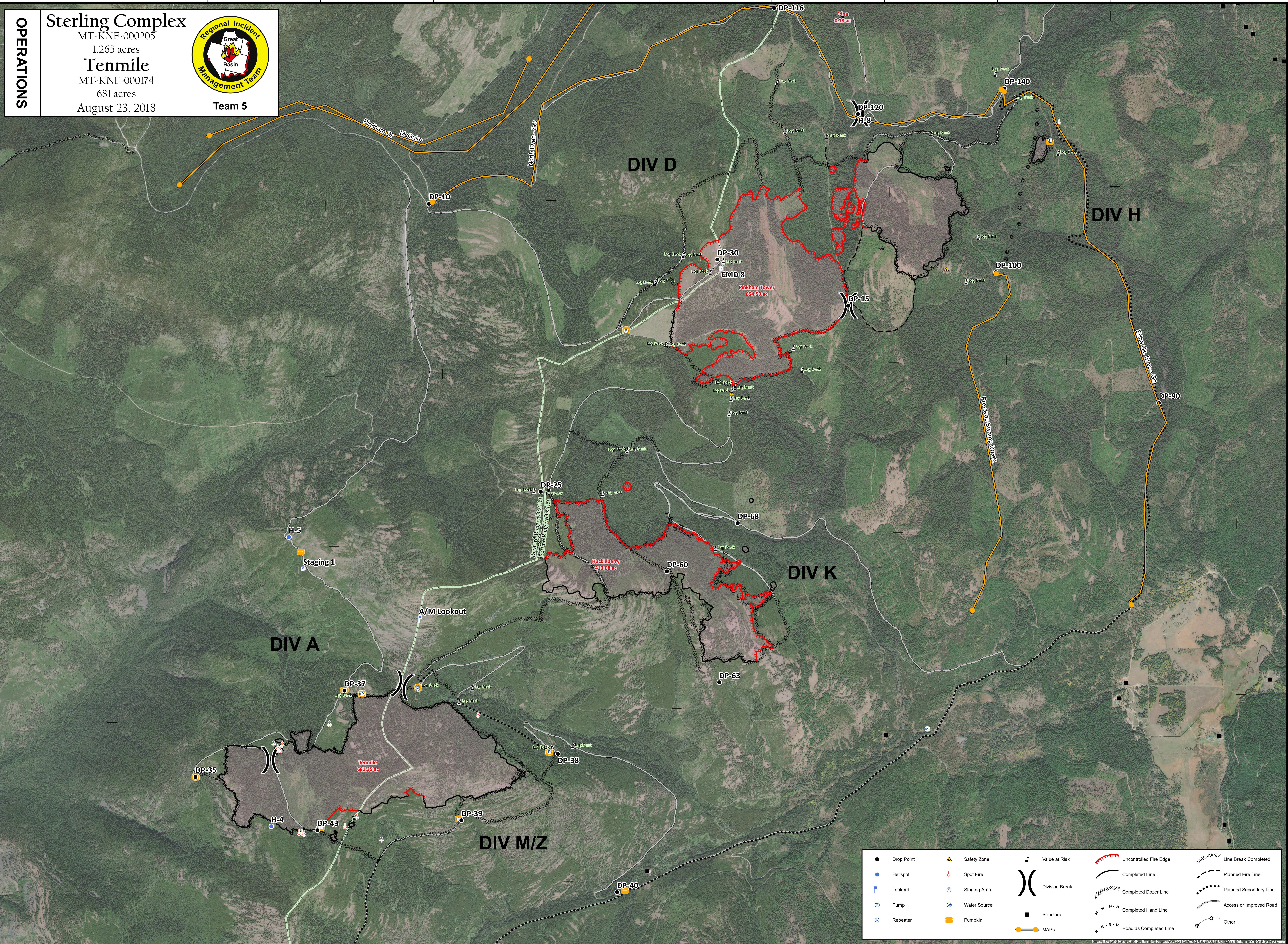
48°40'N 48°39'N 48°38'N 48°37'N 48°36'N 48°35'N

OPERATIONS

Sterling Complex
 MT-KNF-000205
 1,265 acres
Tenmile
 MT-KNF-000174
 681 acres
 August 23, 2018



Team 5



DIV A

DIV D

DIV H

DIV K

DIV M/Z

DP-10

DP-30

DP-35

DP-37

DP-38

DP-39

DP-40

DP-43

DP-60

DP-63

DP-68

DP-90

DP-100

DP-116

DP-120

DP-140

CMD 8

Pinkham Tower
85459 ac

DP-25

Huckleberry
410.08 ac

H-5

Staging 1

A/M Lookout

H-4

DP-15

H-3

Prairie Swamp Creek

Red Top Eave-60

North Eave-Sat

Pinkham Cr
McGuire

● Drop Point	▲ Safety Zone	⬇ Value at Risk	🔴 Uncontrolled Fire Edge	⋯ Line Break Completed
● Helispot	⊙ Spot Fire	⎓ Division Break	— Completed Line	⋯ Planned Fire Line
⌛ Lookout	⊙ Staging Area	■ Structure	▨ Completed Dozer Line	⋯ Planned Secondary Line
⊙ Pump	⊙ Water Source	⬇ MAPs	— Completed Hand Line	⋯ Access or Improved Road
⊙ Repeater	🍂 Pumpkin		⋯ Road as Completed Line	⊙ Other

Coordinate System: NAD 1983 UTM Zone 11N
Map Scale: 1:12,000, 1 inch = 1,000 feet



GB Team 5 GIS
2018-08-22, 21:13 Hrs
OPERATIONS