


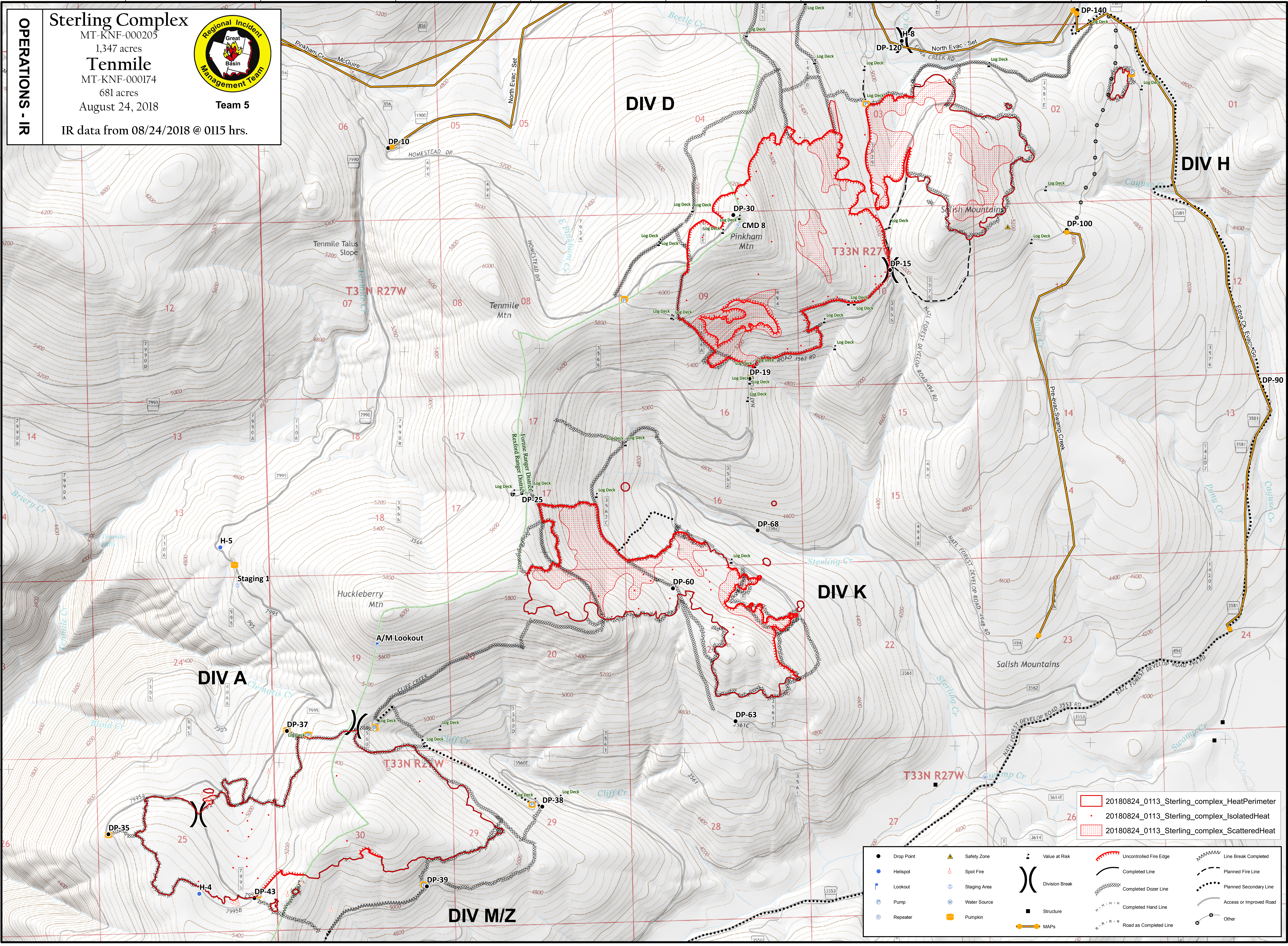
115°10'W 115°9'W 115°8'W 115°7'W 115°6'W 115°5'W 115°4'W 115°3'W 115°2'W

48°39'N 48°38'N 48°37'N 48°36'N 48°35'N

**OPERATIONS - IR**

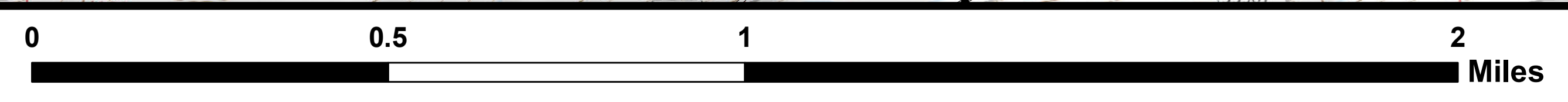
**Sterling Complex**  
 MT-KNF-000205  
 1,347 acres  
**Tenmile**  
 MT-KNF-000174  
 681 acres  
 August 24, 2018

**Team 5**  
 IR data from 08/24/2018 @ 0115 hrs.

- 20180824\_0113\_Sterling\_complex\_HeatPerimeter
- 20180824\_0113\_Sterling\_complex\_IsolatedHeat
- 20180824\_0113\_Sterling\_complex\_ScatteredHeat

- |              |                |                  |                          |                           |
|--------------|----------------|------------------|--------------------------|---------------------------|
| ● Drop Point | ▲ Safety Zone  | ⊙ Value at Risk  | ⚡ Uncontrolled Fire Edge | ⋯ Line Break Completed    |
| ● Helispot   | ⊙ Spot Fire    | ⊗ Division Break | — Completed Line         | ⋯ Planned Fire Line       |
| Ⓛ Lookout    | ⊙ Staging Area | ⊙ Structure      | ⚡ Completed Dozer Line   | ⋯ Planned Secondary Line  |
| Ⓟ Pump       | ⊙ Water Source | ⊙ MAPs           | ⚡ Completed Hand Line    | ⋯ Access or Improved Road |
| Ⓡ Repeater   | ⊙ Pumpkin      |                  | ⚡ Road as Completed Line | ⊙ Other                   |



Coordinate System: NAD 1983 UTM Zone 11N  
 Map Scale: 1:10,000, 1 inch = 833 feet

GB Team 5 GIS  
 8/24/2018, 04:52 hrs  
 OPERATIONS - IR