

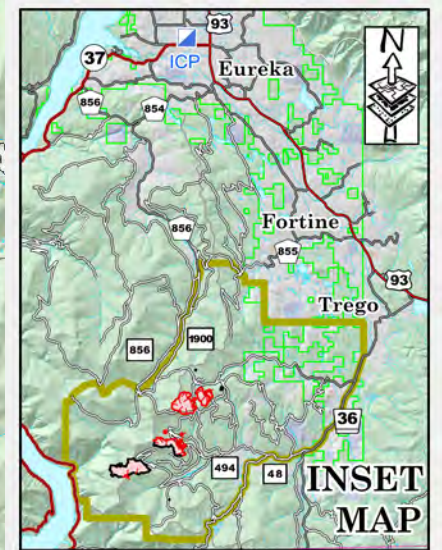
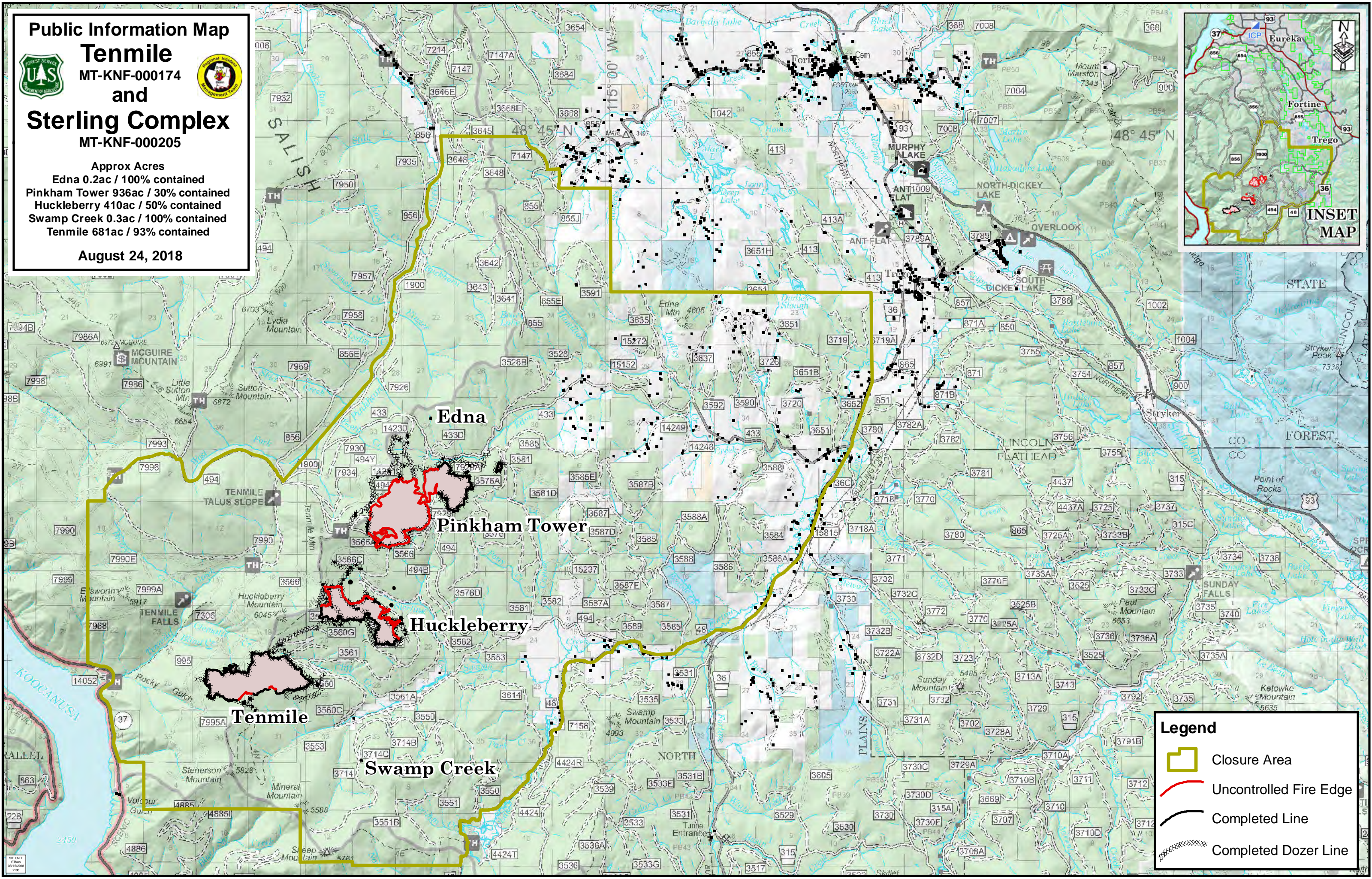
Public Information Map



**Tenmile**  
MT-KNF-000174  
and  
**Sterling Complex**  
MT-KNF-000205

Approx Acres  
Edna 0.2ac / 100% contained  
Pinkham Tower 936ac / 30% contained  
Huckleberry 410ac / 50% contained  
Swamp Creek 0.3ac / 100% contained  
Tenmile 681ac / 93% contained

August 24, 2018



**Legend**

- Closure Area
- Uncontrolled Fire Edge
- Completed Line
- Completed Dozer Line