

Sterling Complex

MTKNF-205
1347 acres

Tenmile

MTKNF-174
681 acres

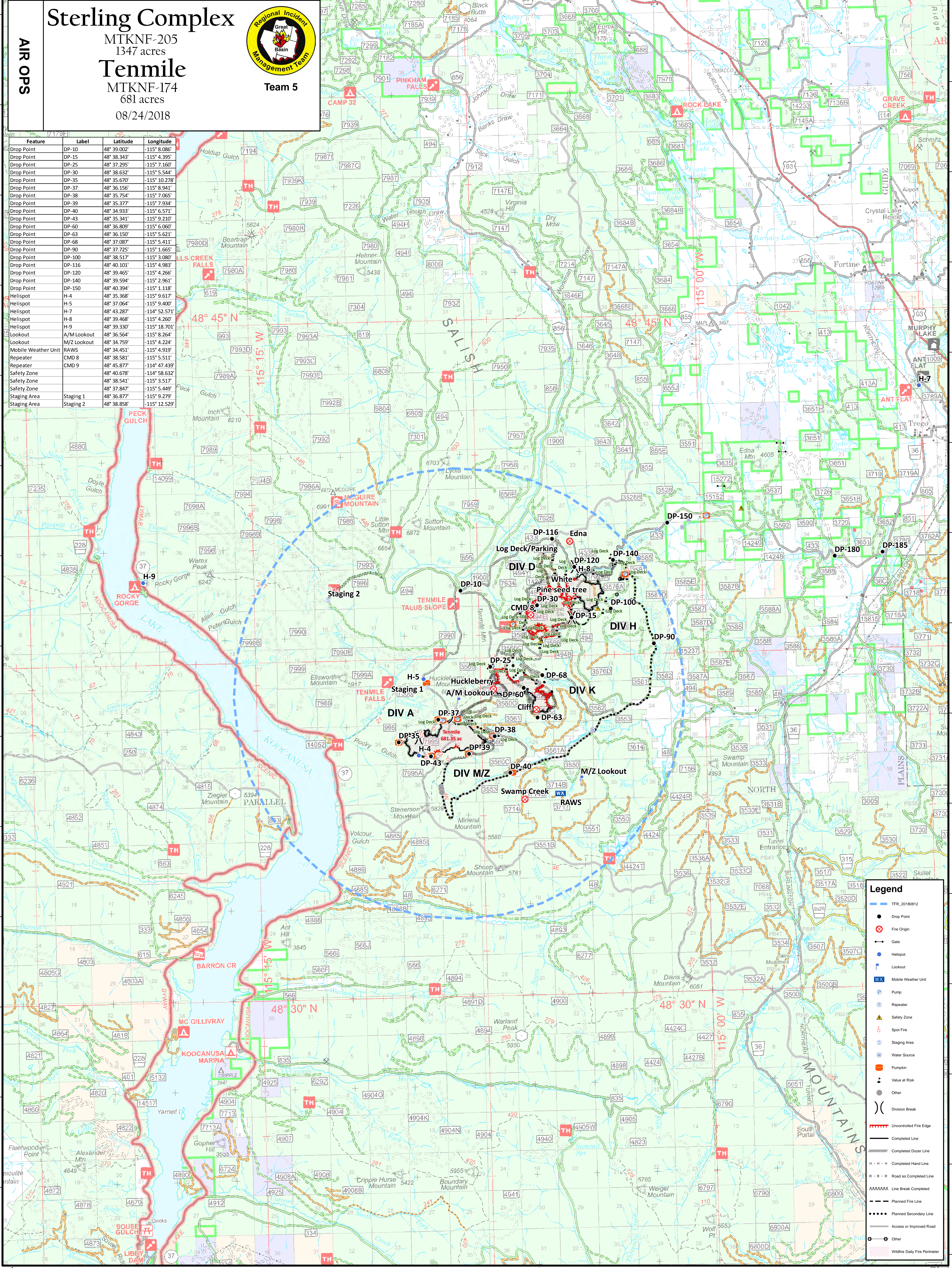
08/24/2018

AIR OPS



Team 5

Feature	Label	Latitude	Longitude
Drop Point	DP-10	48° 39.002'	-115° 8.086'
Drop Point	DP-15	48° 38.343'	-115° 4.395'
Drop Point	DP-25	48° 37.295'	-115° 7.160'
Drop Point	DP-30	48° 38.632'	-115° 5.544'
Drop Point	DP-35	48° 35.670'	-115° 10.278'
Drop Point	DP-37	48° 36.156'	-115° 8.941'
Drop Point	DP-38	48° 35.754'	-115° 7.065'
Drop Point	DP-39	48° 35.377'	-115° 7.934'
Drop Point	DP-40	48° 34.933'	-115° 6.571'
Drop Point	DP-43	48° 35.341'	-115° 3.080'
Drop Point	DP-60	48° 36.809'	-115° 6.060'
Drop Point	DP-63	48° 36.150'	-115° 5.621'
Drop Point	DP-68	48° 37.087'	-115° 5.411'
Drop Point	DP-90	48° 37.725'	-115° 1.665'
Drop Point	DP-100	48° 38.517'	-115° 3.080'
Drop Point	DP-116	48° 40.101'	-115° 4.983'
Drop Point	DP-120	48° 39.465'	-115° 4.266'
Drop Point	DP-140	48° 39.594'	-115° 2.961'
Drop Point	DP-150	48° 40.394'	-115° 1.118'
Helispot	H-4	48° 35.368'	-115° 9.617'
Helispot	H-5	48° 37.064'	-115° 9.400'
Helispot	H-7	48° 43.287'	-114° 52.571'
Helispot	H-8	48° 39.468'	-115° 4.260'
Helispot	H-9	48° 39.330'	-115° 18.701'
Lookout	A/M Lookout	48° 36.564'	-115° 8.264'
Lookout	M/Z Lookout	48° 34.759'	-115° 4.224'
Mobile Weather Unit	RAW5	48° 34.451'	-115° 4.919'
Repeater	CMD 8	48° 38.581'	-115° 5.511'
Repeater	CMD 9	48° 45.877'	-114° 47.439'
Safety Zone		48° 40.678'	-114° 58.632'
Safety Zone		48° 38.541'	-115° 3.517'
Safety Zone		48° 37.847'	-115° 5.449'
Staging Area	Staging 1	48° 36.877'	-115° 9.279'
Staging Area	Staging 2	48° 38.858'	-115° 12.529'



Legend

- TFR 20180812
- Drop Point
- Fire Origin
- Gate
- Helispot
- Lookout
- Mobile Weather Unit
- Pump
- Repeater
- Safety Zone
- Spot Fire
- Staging Area
- Water Source
- Pumpkin
- Value at Risk
- Other
- Division Break
- Uncontrolled Fire Edge
- Completed Line
- Completed Doser Line
- Completed Hand Line
- Road as Completed Line
- Line Break Completed
- Planned Fire Line
- Access or Improved Road
- Other
- Wildfire Daily Fire Perimeter