

# Sterling Complex

MTKNF-000174

1405 acres

## Tenmile

MTKNF-000174

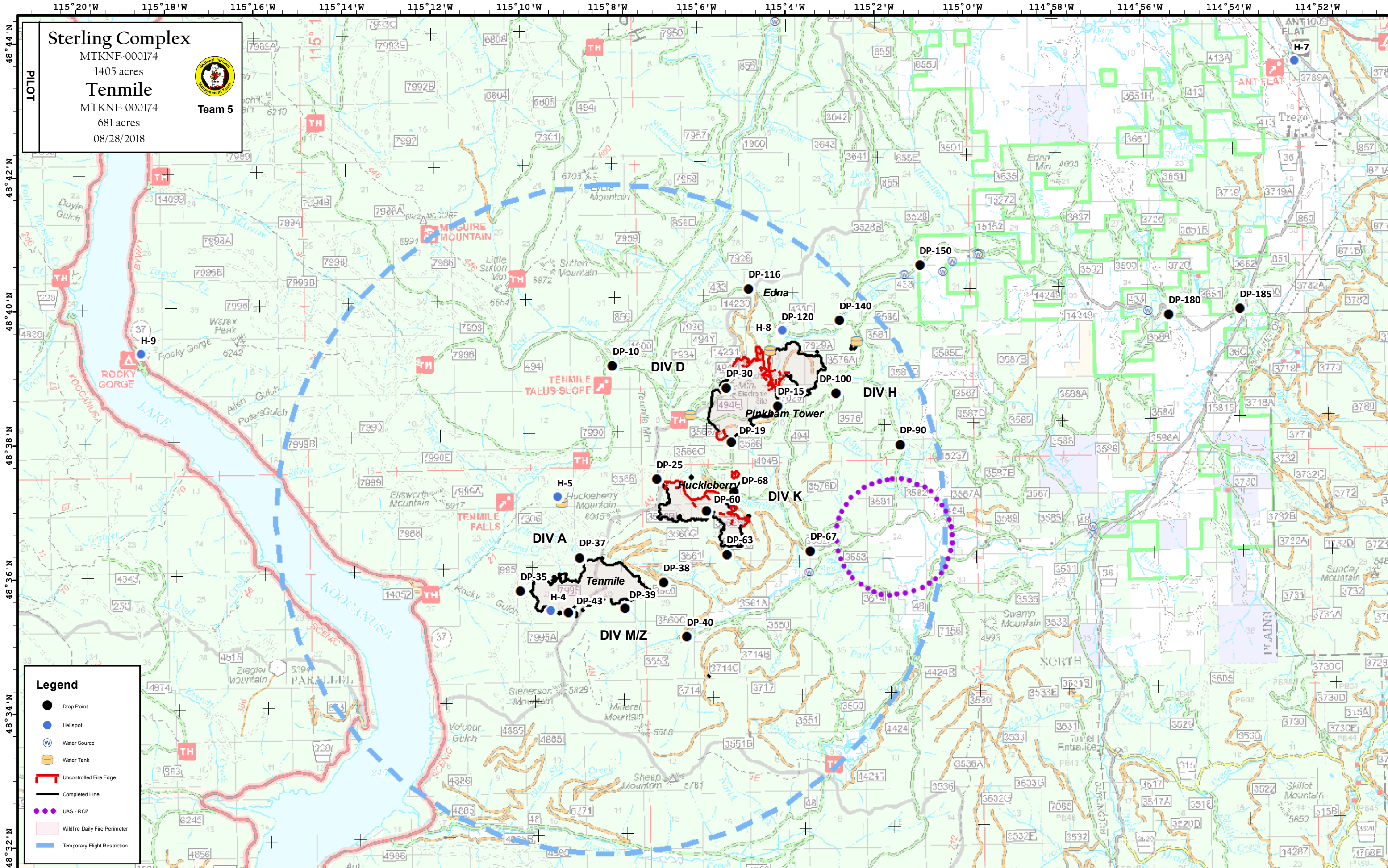
681 acres

08/28/2018



Team 5

PIL0T



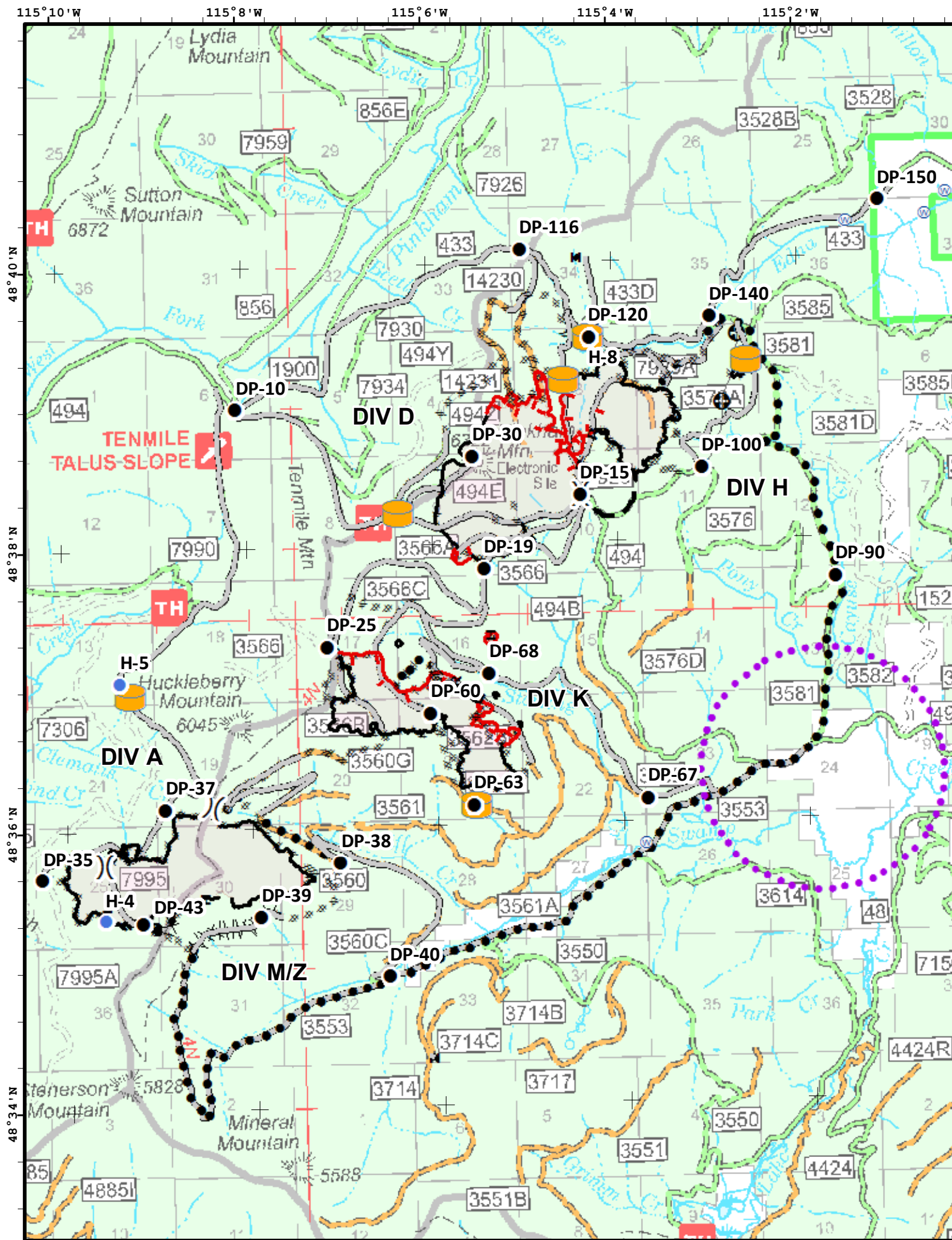
**Legend**

- Drop Point
- Helispot
- ⊕ Water Source
- ⊕ Water Tank
- Uncontrolled Fire Edge
- Completed Line
- ⋯ UAS - ROZ
- ▭ Wildfire Daily Fire Perimeter
- ▭ Temporary Flight Restriction

Coordinate System: NAD 1983 UTM Zone 11N  
Map Scale: 1:93,286, 1 inch = 7,774 feet



PIL0T



FeatureCategory	ID	Latitude	Longitude
Drop Point	DP-10	48° 39.002'	-115° 8.086'
Drop Point	DP-15	48° 38.343'	-115° 4.395'
Drop Point	DP-19	48° 37.827'	-115° 5.455'
Drop Point	DP-25	48° 37.295'	-115° 7.160'
Drop Point	DP-30	48° 38.632'	-115° 5.544'
Drop Point	DP-35	48° 35.670'	-115° 10.278'
Drop Point	DP-37	48° 36.156'	-115° 8.941'
Drop Point	DP-38	48° 35.754'	-115° 7.065'
Drop Point	DP-39	48° 35.377'	-115° 7.934'
Drop Point	DP-40	48° 34.933'	-115° 6.571'
Drop Point	DP-43	48° 35.341'	-115° 9.210'
Drop Point	DP-60	48° 36.809'	-115° 6.060'
Drop Point	DP-63	48° 36.150'	-115° 5.621'
Drop Point	DP-67	48° 36.170'	-115° 3.744'
Drop Point	DP-68	48° 37.082'	-115° 5.423'
Drop Point	DP-90	48° 37.725'	-115° 1.665'
Drop Point	DP-100	48° 38.517'	-115° 3.080'
Drop Point	DP-116	48° 40.101'	-115° 4.983'
Drop Point	DP-120	48° 39.465'	-115° 4.266'
Drop Point	DP-140	48° 39.594'	-115° 2.961'
Drop Point	DP-150	48° 40.394'	-115° 1.118'
Drop Point	DP-180	48° 39.559'	-114° 55.542'
Drop Point	DP-185	48° 39.620'	-114° 53.936'
Helispot	H-4	48° 35.368'	-115° 9.617'
Helispot	H-5	48° 37.064'	-115° 9.400'
Helispot	H-7	48° 43.287'	-114° 52.571'
Helispot	H-8	48° 39.468'	-115° 4.260'
Helispot	H-9	48° 39.330'	-115° 18.701'
Water Source		48° 44.075'	-115° 4.249'
Water Source		48° 35.845'	-115° 3.787'
Water Source		48° 36.422'	-114° 57.388'
Water Source		48° 39.587'	-114° 53.895'
Water Source		48° 39.620'	-114° 56.017'
Water Source		48° 40.527'	-114° 59.802'
Water Source		48° 40.245'	-115° 1.473'
Water Source		48° 40.439'	-115° 0.397'
Water Source		48° 40.284'	-115° 0.619'
Water Tank		48° 38.233'	-115° 6.367'
Water Tank		48° 35.354'	-115° 9.185'
Water Tank		48° 35.354'	-115° 9.182'
Water Tank		48° 35.766'	-115° 7.143'
Water Tank		48° 39.274'	-115° 2.573'
Water Tank		48° 36.134'	-115° 8.790'
Water Tank		48° 36.976'	-115° 9.298'
Water Tank		48° 40.530'	-114° 59.797'
Water Tank		48° 39.161'	-115° 4.543'
Water Tank		48° 36.149'	-115° 5.594'
Water Tank		48° 39.465'	-115° 4.273'

Coordinate System: NAD 1983 UTM Zone 11N  
 NORTH Map Scale: 1:63,360, 1 inch = 5,280 feet

