

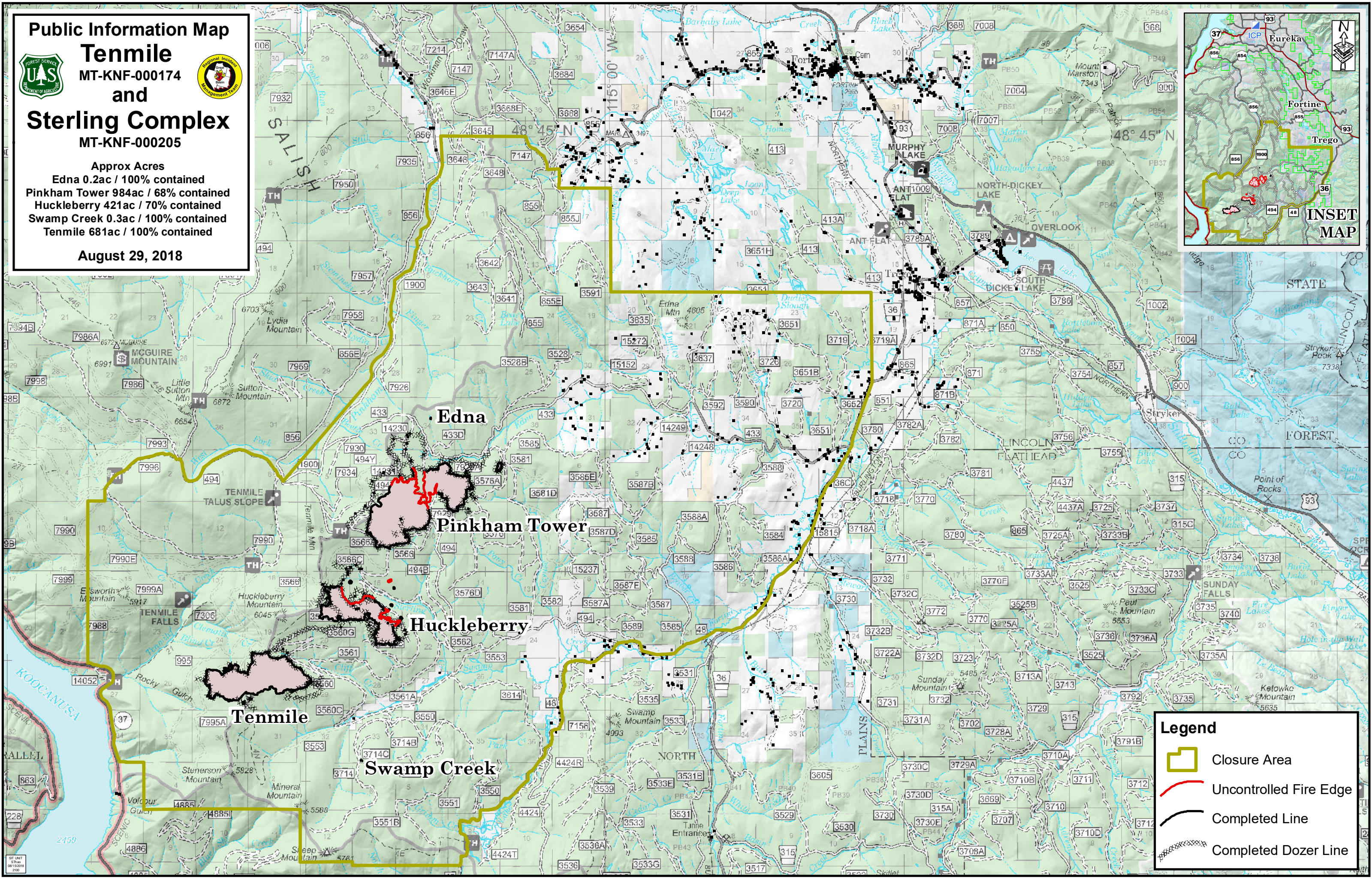
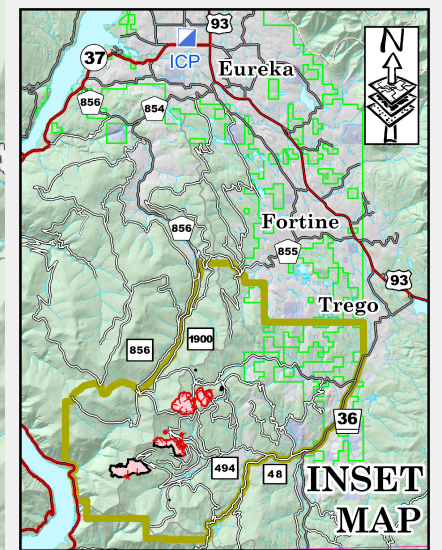
Public Information Map







**Tenmile**  
MT-KNF-000174  
and  
**Sterling Complex**  
MT-KNF-000205

Approx Acres  
Edna 0.2ac / 100% contained  
Pinkham Tower 984ac / 68% contained  
Huckleberry 421ac / 70% contained  
Swamp Creek 0.3ac / 100% contained  
Tenmile 681ac / 100% contained

August 29, 2018



**Legend**

-  Closure Area
-  Uncontrolled Fire Edge
-  Completed Line
-  Completed Dozer Line