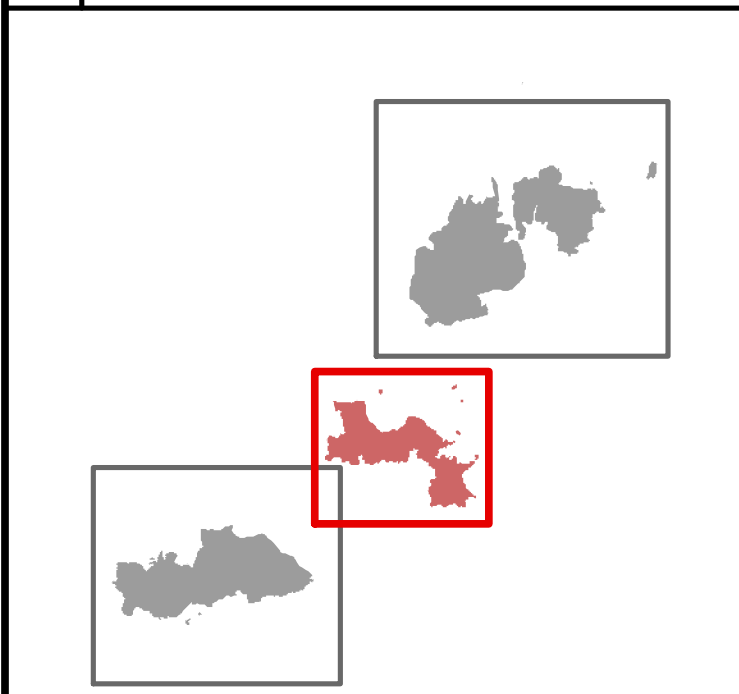


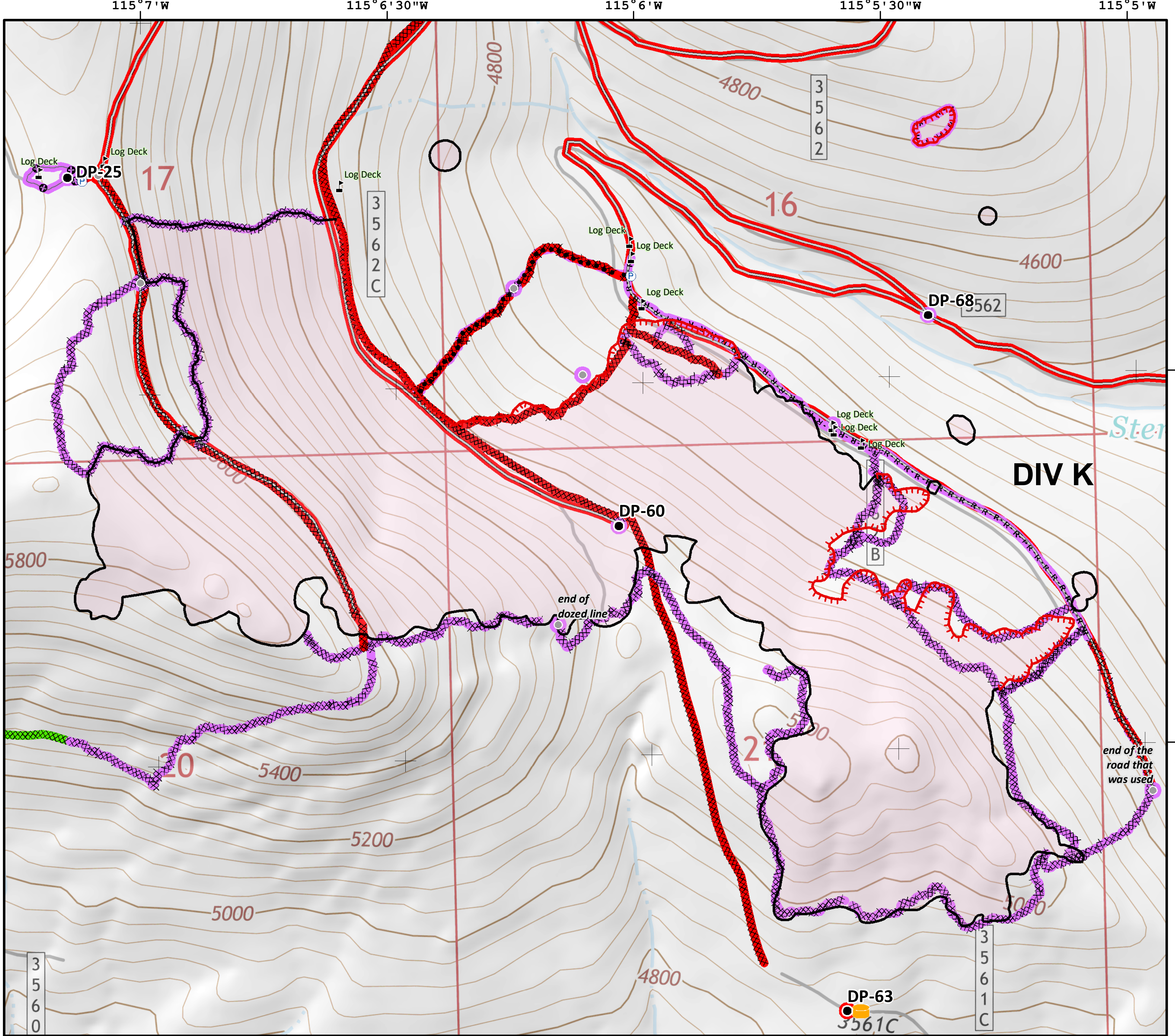
SUP. REPAIR
HUCKLEBERRY

Sterling Complex
 MT-KNF-205
 1,405 acres
Tenmile
 MT-KNF-174
 681 acres
 August 29, 2018

Team 5



- Repair Needed
- Unknown
- Completed - Inspected
- ▬ Repair Needed
- ▬ Unknown
- Drop Point
- Ⓟ Pump
- 🍠 Pumpkin
- ⚠ Value at Risk
- Other
- 🔴 Uncontrolled Fire Edge
- ▬ Completed Line
- ▨ Completed Dozer Line
- ⋯ Completed Hand Line
- ⋯ Road as Completed Line
- ⋯ Planned Secondary Line
- ▬ Access or Improved Road
- ⊕ Other



Coordinate System: NAD 1983 UTM Zone 11N
Map Scale: 1:6,000, 1 inch = 500 feet