


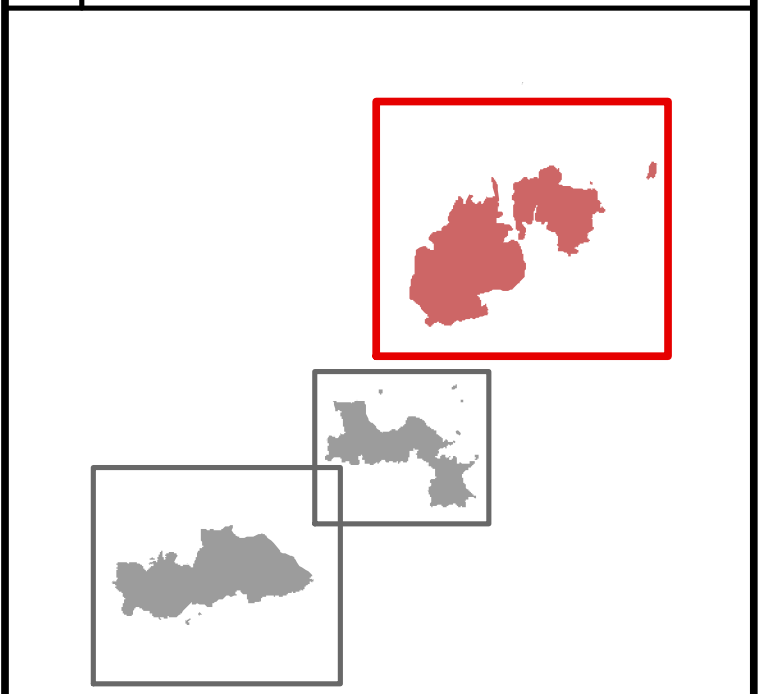
115° 6' W 115° 5' 30" W 115° 5' W 115° 4' 30" W 115° 4' W 115° 3' 30" W 115° 3' W 115° 2' 30" W

SUP. REPAIR
PINKHAM TOWER

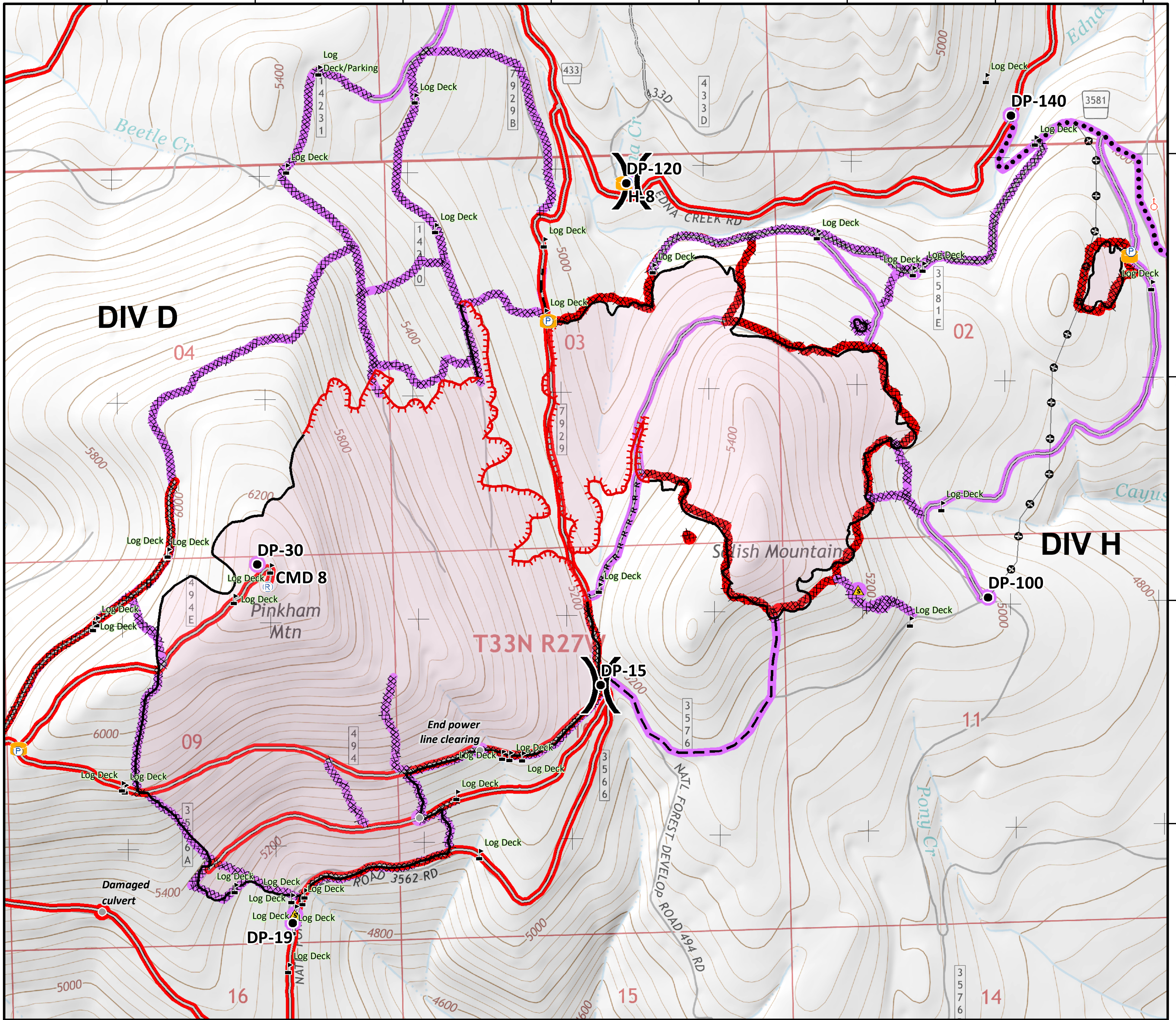
Sterling Complex
MT-KNF-205
1,405 acres
Tenmile
MT-KNF-174
681 acres
August 29, 2018



Team 5



- Repair Needed
- Unknown
- Repair Needed
- Unknown
- Drop Point
- Helispot
- P Pump
- R Repeater
- ▲ Safety Zone
- ⊙ Spot Fire
- P Pumpkin
- ⚠ Value at Risk
- Other
-) Division Break
- Uncontrolled Fire Edge
- Completed Line
- Completed Dozer Line
- Road as Completed Line
- Planned Fire Line
- Planned Secondary Line
- Access or Improved Road
- ⊕ Other



Coordinate System: NAD 1983 UTM Zone 11N
Map Scale: 1:10,000, 1 inch = 833 feet